

Network Video Recorder

Version: V4.62.200 build230105

Release Note

Firmware Basic Information	Firmware Version:	V4.62.200 build230105
	SDK Version:	V6.1.8.45
	Play Library:	V7.4.0.0
	Web component:	V4.5.0 build221216 IE: IE11、Chrome: 57+、firefox : 52+、 safari : 12+、edge :89+
	OpenSDK Version:	V2.15 (萤石)、V2.2.2.15 (OTAP)

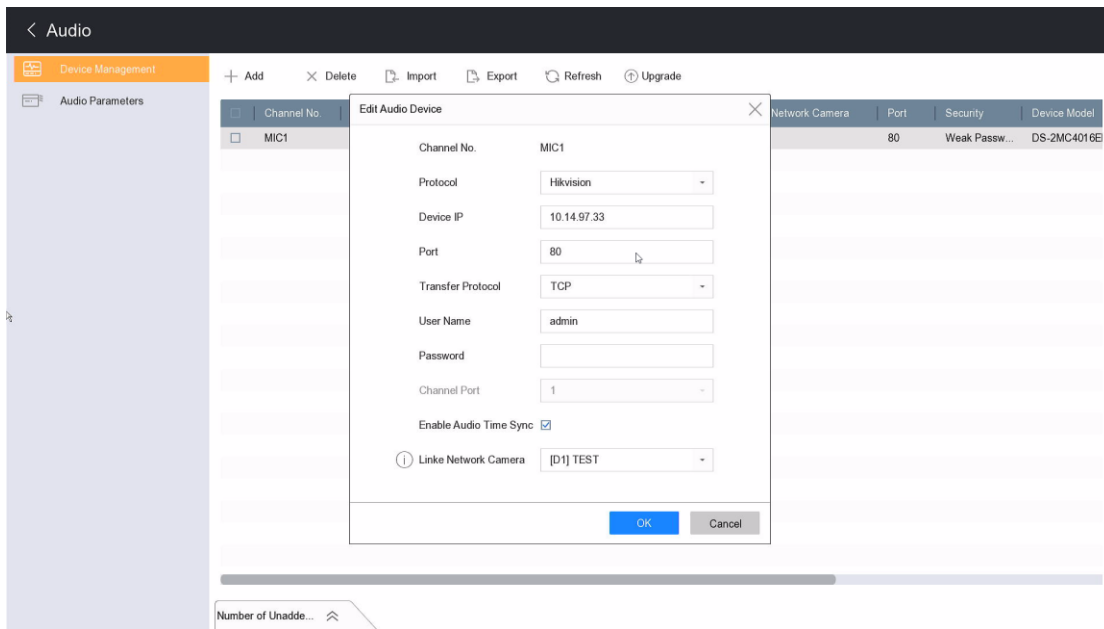
Reason of Upgrade

Add new functions, fix known issues and optimize product performances.

New Features

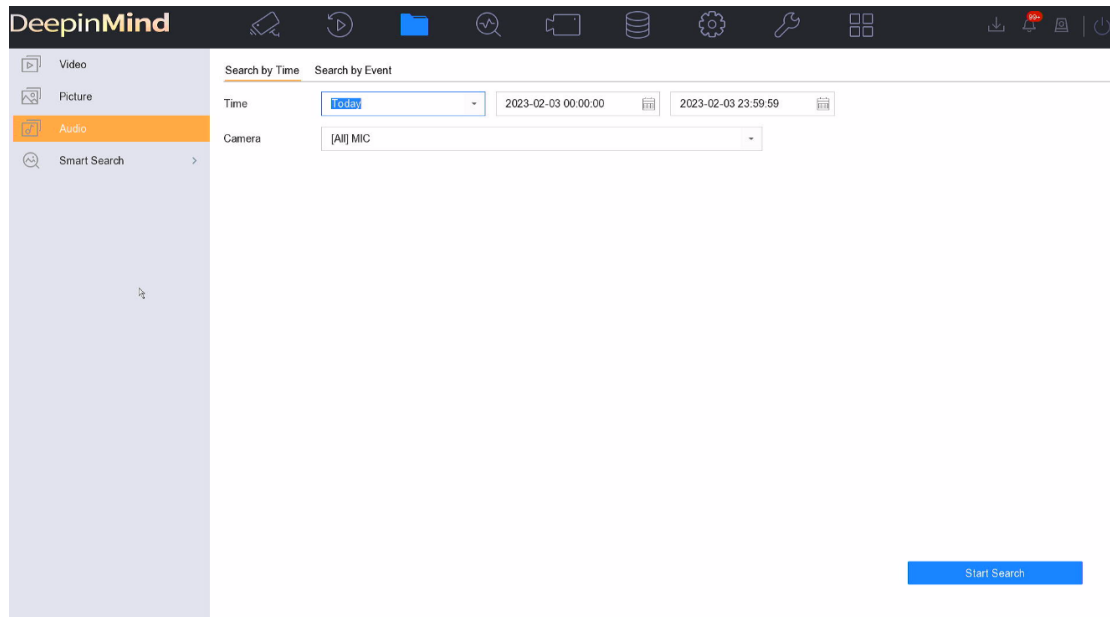
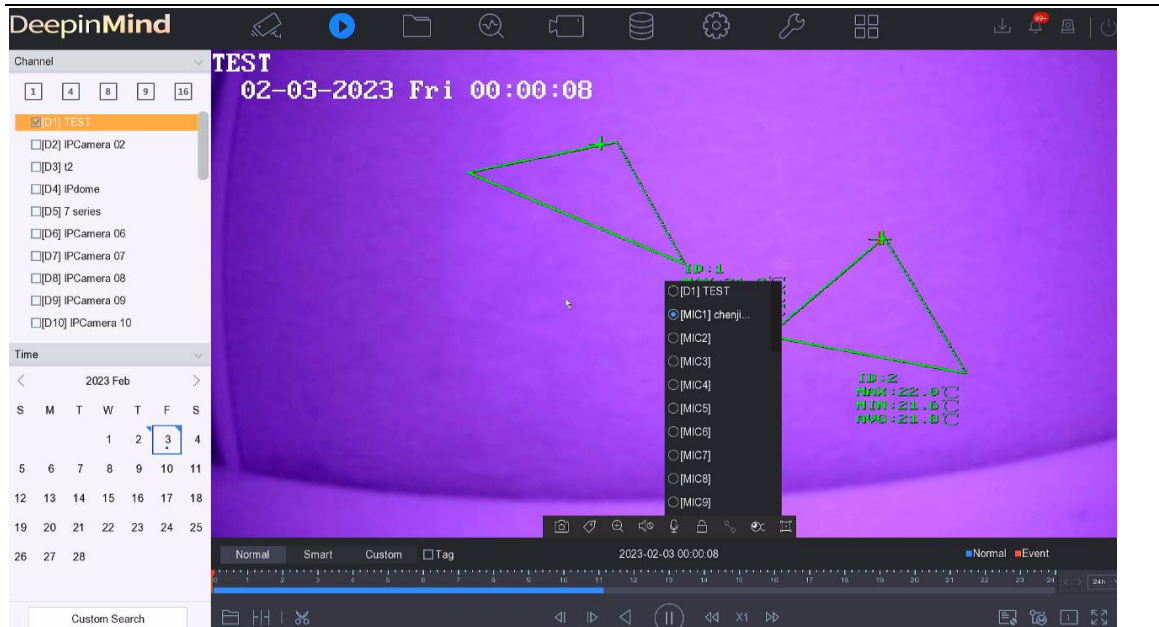
【Support Add Network Microphone】

1. Support adding network microphone to NVR. The model is: DS_UAC_M1P



2. Support storage, preview, playback and search of audio content.





3. Support binding one audio channel to one video channel.
4. Related audio functions can be worked with 4200.

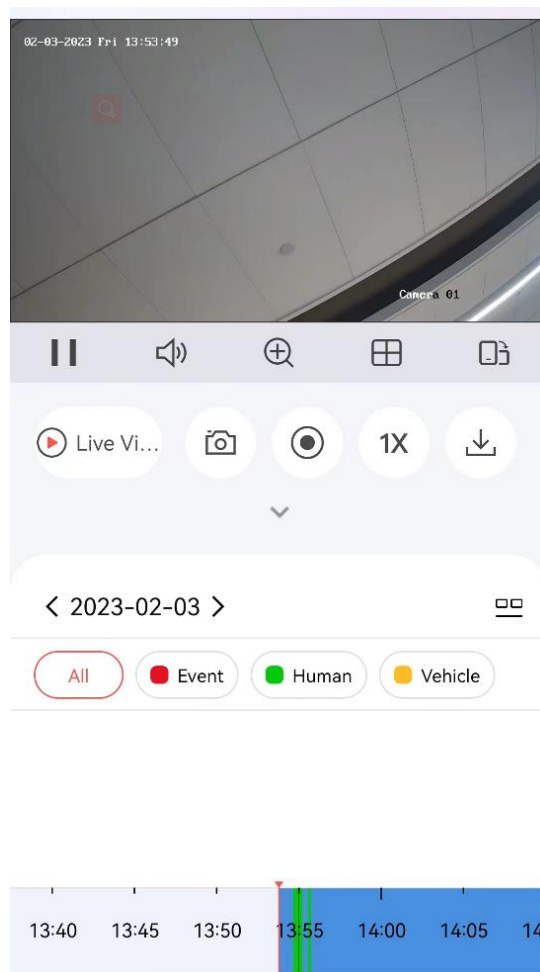
【Support Receive and Upload AIOP Events】

1. After AIOP camera is connected, the AIOP event can be received. Arming time and linkage methods can be configured. Users can rename the AIOP events.
2. Support AIOP event picture retrieval on WEB and local GUI.

3. Support upload AIOE event to 4200.

【Support Hik-Connect's Playback Progress Bar Display in Different Colors to Classify Human/Vehicle】

1. Support using different colors to distinguish event video and non-event video for HC playback. Support quick filtering of human/vehicle video, and human/vehicle videos display in different colors.
2. Currently, only motion 2.0 human/vehicle video retrieval is supported on HC. Later versions will complete the human/vehicle classification retrieval of other events.



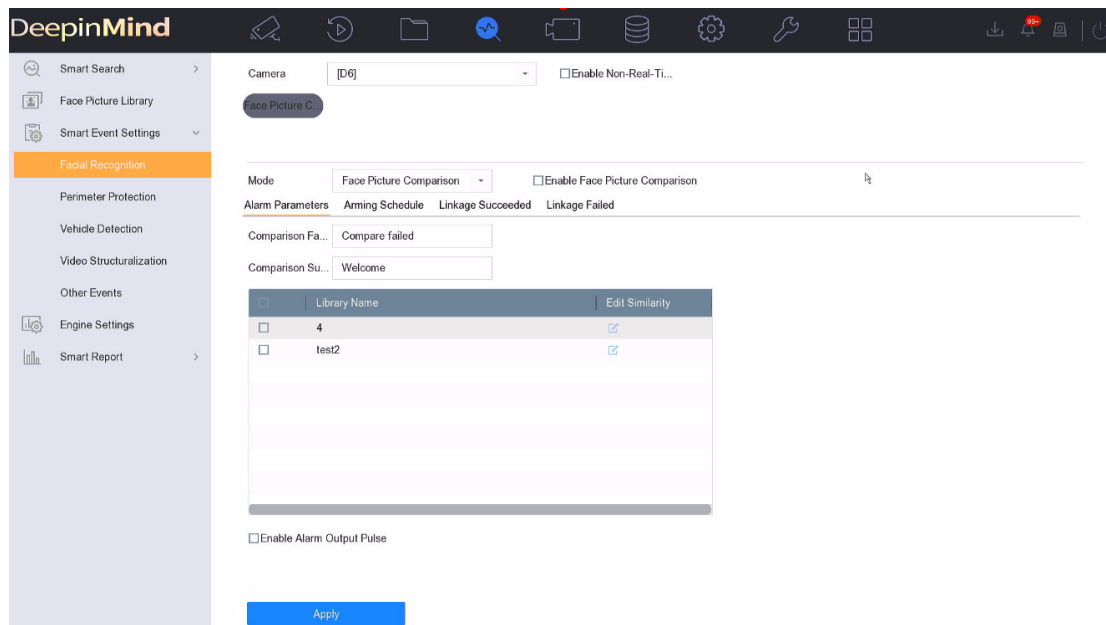
【Support Hebrew】

Support Hebrew.

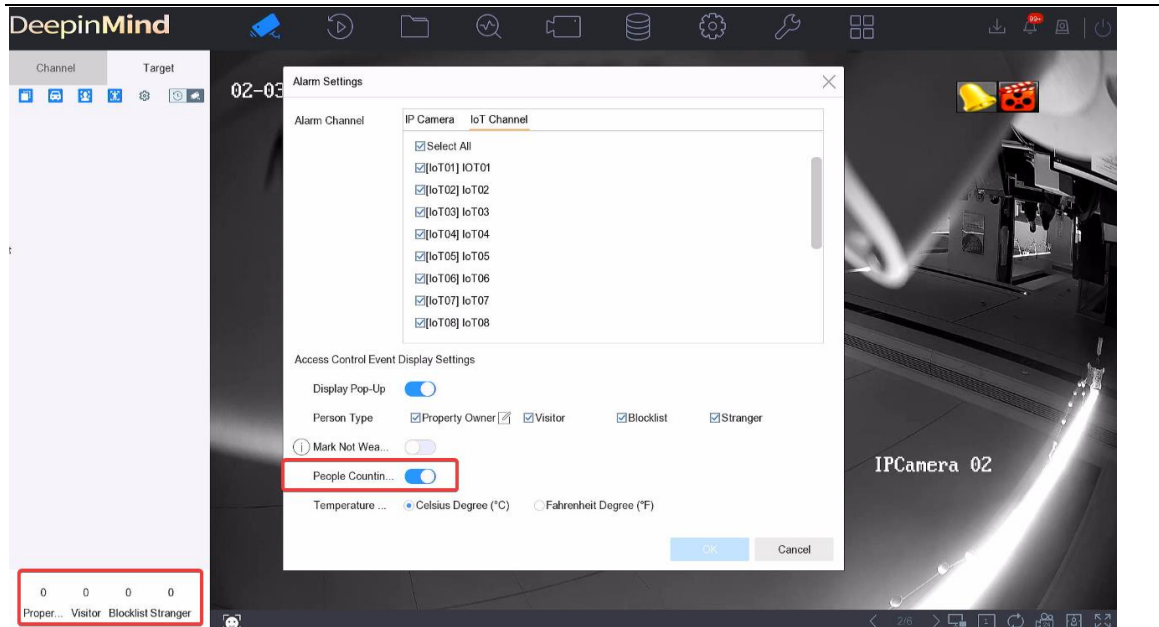
Modified Features

【Optimize Functions Related to Min Moe Connection】

1. When add Min Moe devices to NVR, authentication success and authentication failed will linkage with event record default.
2. Support face picture pop up on local GUI's live view interface of Deepinmind NVR.
3. Face capture of Min Moe can linkage with face comparison, people frequency and stranger detection of Deepinmind NVR



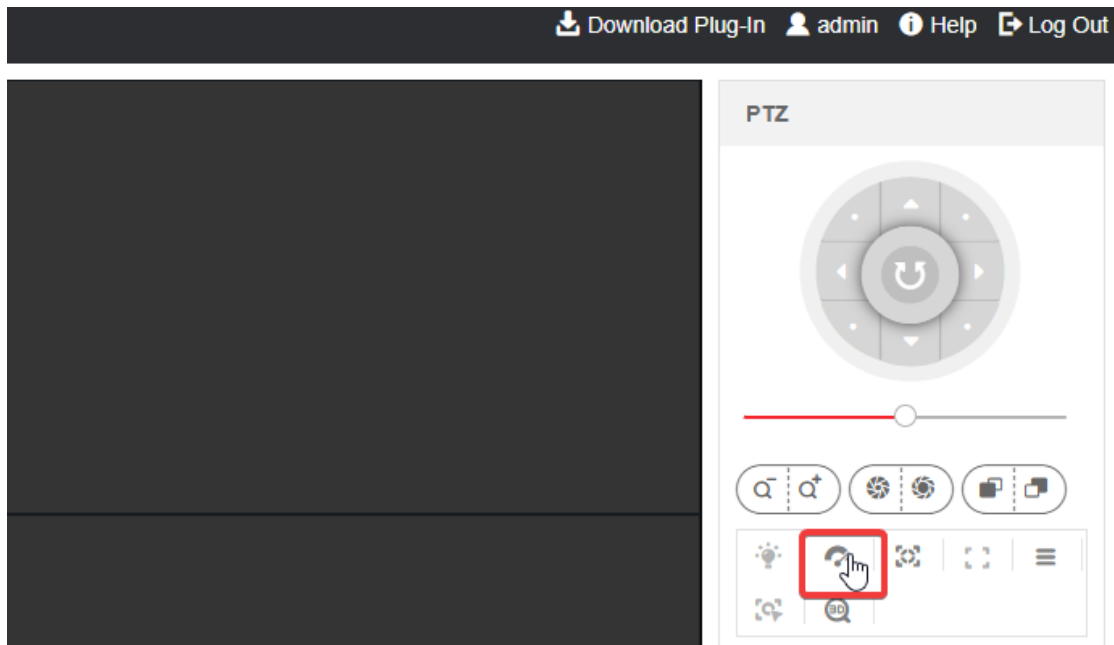
4. Support people access information statistics, which include property owner, visitor, block list and stranger.



5. Support 5603/5604/604/607 models. The version is V3.3.10 B220517.

【GUI & Web Functions Optimization】

1. Support wiper control on web side.



2. File name of video is modified to channel + recording time (start and end time).

Download by File

Channel: [D1] TEST

File Type: All Types

Stream Type: Main Stream

Start Time: 2023-02-02 00:00:00

End Time: 2023-02-02 23:59:59

Download Stop Downloading

No.	File Name	Start Time
1	ch0001_20230202T145019Z_20230202T165718Z_X00000000028000000	2023-02-02 14:50:19
2	ch0001_20230202T165717Z_20230202T191138Z_X00000000028000106	2023-02-02 16:57:17

3. Support editing SSH port.

HIKVISION

Live View Playback Search Application Configuration Display Alarm

Local System System Settings System Maintenance Security User Management Channel Management VCA Configuration Live View Con... Audio Management

Authentication Mode IP Address Filtering MAC Address Filtering Security Service Channel Default Password ...

Enable SSH

*SSHPort No. 22

Enable Stream Encryption

Enable Picture URL Digest Authen...

Enable Serial Port Authentication ...

Save

4. Support searching RTSP/HTTP streaming URL on web via HELP interface.

Introduction

- Access Via Web Browser
- Install the Plug-in

Live View

- Live View Page Introduction

Playback

- Playback

Search

- Download Picture and Video Files

Application

- Application

Configuration

- Local Configuration
- System
- Network
- Video/Audio
- Image
- Event
- Storage
- Vehicle Detection
- VCA Configuration
- Self-Learning
- Face Picture Library
- IoT Channel Settings
- Display Alarm

RTSP/HTTP Protocol Access Path

- Use RTSP to Get Stream via URL
- Use HTTP to Access URL

Get Stream for Live View

- URL rule

`rtsp://username:password@<address>:<port>/Streaming/Channels/<id>`

Note: VLC can parse the user name and password in URL, but the RTSP request sending to the device cannot contain user name and password.

- Description

username: Device user name

password: Device password

<address>: Device IP address

<port>: RTSP port

<id>: Channel No. and stream type, e.g. 101 (Channel 1 main stream), 102 (Channel 1 sub-stream), 1701 (Channel 17 main stream)

- Example

DS-8632N-I8 Channel 1 main stream:

`rtsp://admin:hik12345@192.168.1.64:554/Streaming/Channels/101`

Get Stream for Playback

- URL rule

`rtsp://username:password@<address>:<port>/Streaming/tracks/<id>(?parm1=value1&parm2=value2...)`

Note: VLC can parse the user name and password in URL, but the RTSP request sending to the device cannot contain user name and password.

- Description

username: Device user name

password: Device password

<address>: Device IP address

<port>: RTSP port

<id>: Channel No. and stream type, e.g. 101 (Channel 1 main stream), 102 (Channel 1 sub-stream), 1701 (Channel 17 main stream)

(?parm1=value1&parm2=value2...): Recording start time and end time (See Example for details)

- Example

DS-8632N-I8 Channel 1

`rtsp://admin:hik12345@192.168.1.64:554/Streaming/tracks/101?starttime=20221201T120000Z&endtime=20221201T121010Z`

Note: StartTime and EndTime are the start time and end time for playback of the video files in the device channel.

The specific format is YYYYMMDD"Thhmmss"Z", where YYYY stands for the year, MM for the month, DD for the date, T for the time separator, hh for the hour, mm for the minute, ss for the second, and Z is optional and stands for the Zulu (GMT) time.

5. Web side engine associated channel display optimization. The associated channel name is changed to Channel Number + Channel Name.

Engine Configuration Task Configuration Face Grading Clustering Strategy

No.	Status
1	Running
Linked Channel: [D2]IPCamera 02; [D4]IPdome; [D5]7 series; [D5]7 series	
2	Running

Save

【Log Optimization】

Optimize log content display for easy troubleshooting.

【Extend Event Video's Time Range】

Extend event video with 30 more seconds on local GUI of NVR.

Product List

Acusense NVR K51+A8	DS-7608NXI-I2/S(C)
	DS-7608NXI-I2/8P/S(C)
	DS-7616NXI-I2/S(C)
	DS-7616NXI-I2/16P/S(C)
	DS-7716NXI-I4/S(C)
	DS-7716NXI-I4/16P/S(C)
	DS-7732NXI-I4/S(C)
	DS-7732NXI-I4/16P/S(C)
	DS-7808NXI-I2/S(C)
	DS-7808NXI-I2/8P/S(C)
	DS-7816NXI-I2/S(C)
	DS-7816NXI-I2/16P/S(C)
	DS-7916NXI-I4/S(C)
	DS-7916NXI-I4/16P/S(C)
	DS-7932NXI-I4/S(C)
DS-7932NXI-I4/16P/S(C)	

Customer Impact and Recommended Action

This new firmware upgrade is to improve product performance, and will take effect automatically after upgrading from previous versions. We'd like to inform you the above changes. Also, we are sorry for any possible inconvenience of use-habit changes caused by this action.

Note:

- Hikvision has all rights to alter, modify and cancel this notice.
- Hikvision doesn't give any guarantee for old models' stock.
- Hikvision is not liable for any typing or printing errors.
- For special model's change details, please contact our local technical support team.