

## PanoVu Firmware

Version: V5.3.19

### Release Note

<b>Firmware Basic Information</b>	Firmware Version:	V5.3.19 build170123
	SDK Version:	v 5.2.6.15 build20161221
	Play Library (PlayCtrl.dll)	V7.3.2.71_Build20161201
	Encapsulation Library (SystemTransform.dll)	v 2.5.1.14 (20161212)
	Smart configuration library	v3.3.14.3_build2_20160813
	iVMS-4200	V2.5.5.7 build20161229
	IE Client version	V4.0.1build170110

## Hikvision Firmware V5.3.19 Features

### 1, Compatible condition

- This firmware is for DS-2DP1636Z-D and DS-2DP0818Z-D. Notice that the devices before 2015/12/28 cannot upgrade to this version.

### 2, Newly add

- Auto calibration.
  1. Only support calibrate on web component.
  2. Choose *auto* mode, then click *calibrate*. It will pop up box like blow. At the same time, the panoramic channel live view will switch to original image.
  3. It will automatically calibrate for each scene, every scene cost about 3 minutes. It needs to manually switch to the next scene after one scene is calibrating succeeded. After all scenes finished calibration, click *Auto calibrating succeeded*, then the device will reboot.
  4. During the calibrating process, users can click *Stop Calibration* to stop it. But as the panoramic channel live view have switched to original image, users need to *click Auto calibrating succeeded* to recover.

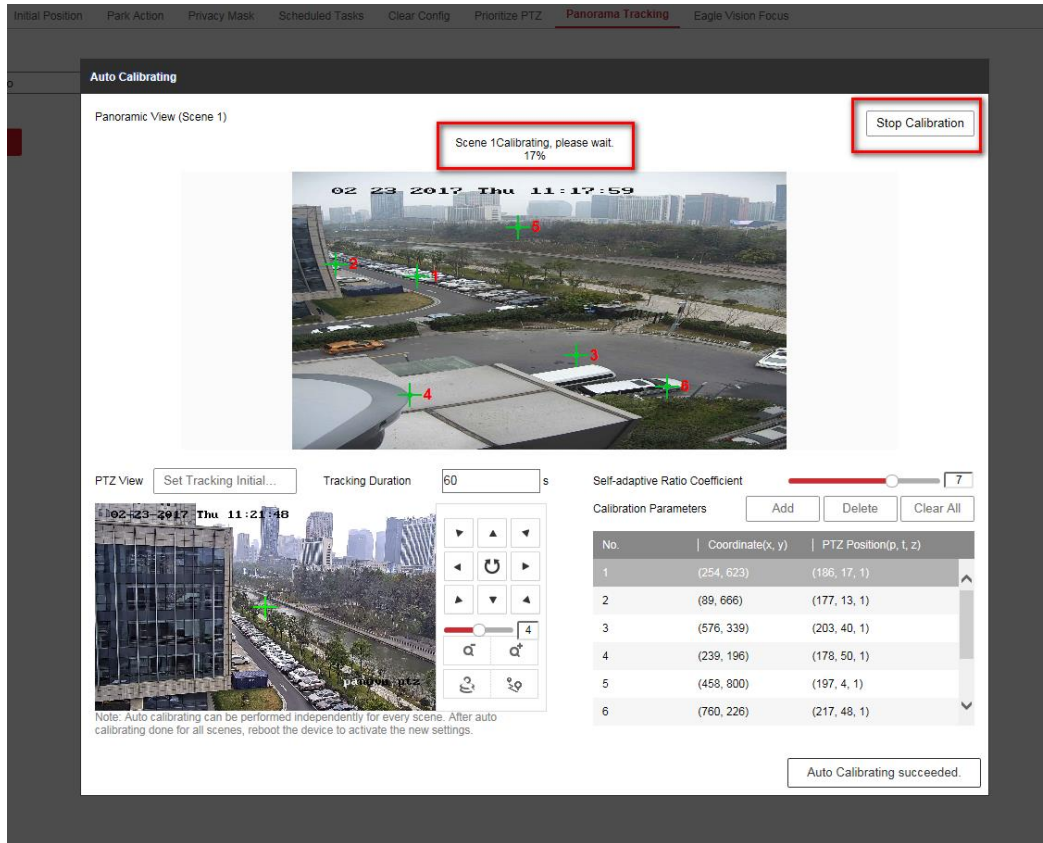


Figure 1 Auto calibration

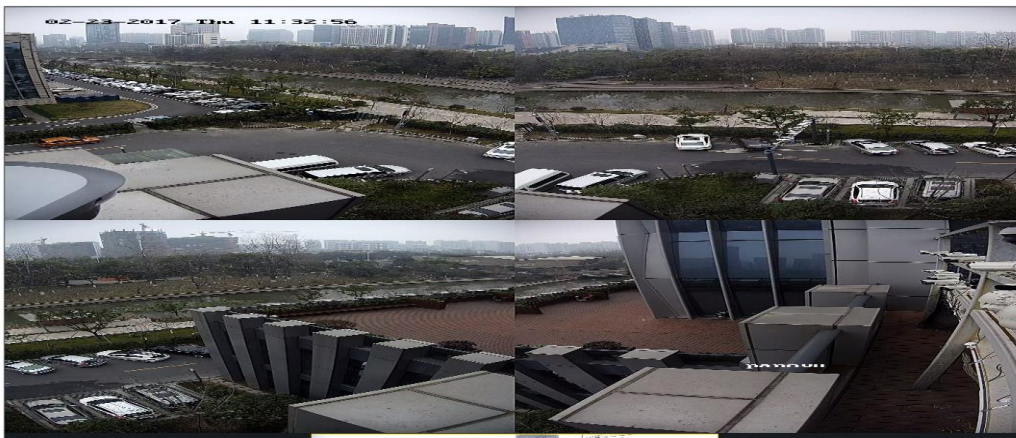


Figure 2 Panoramic live view when calibration

● **Add self-adaptive ratio coefficient configuration.**

1. **The self-adaptive ratio coefficient can be set from 0 to 10.**
2. **When set the coefficient to 0, the tracking zoom ratio will adjust according the tilt angle and current zoom ratio. Remind to set an appropriate zoom ratio when save settings.**
3. **When set the coefficient lager than 0, the tracking zoom ratio will adjust according the target frame. The larger coefficient, the lager zoom ratio.**

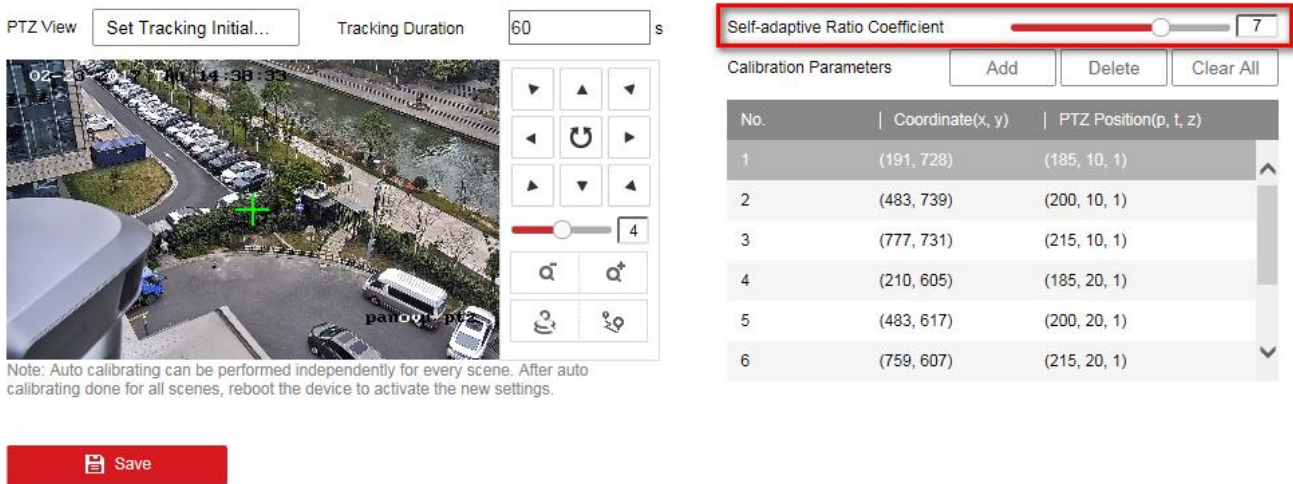
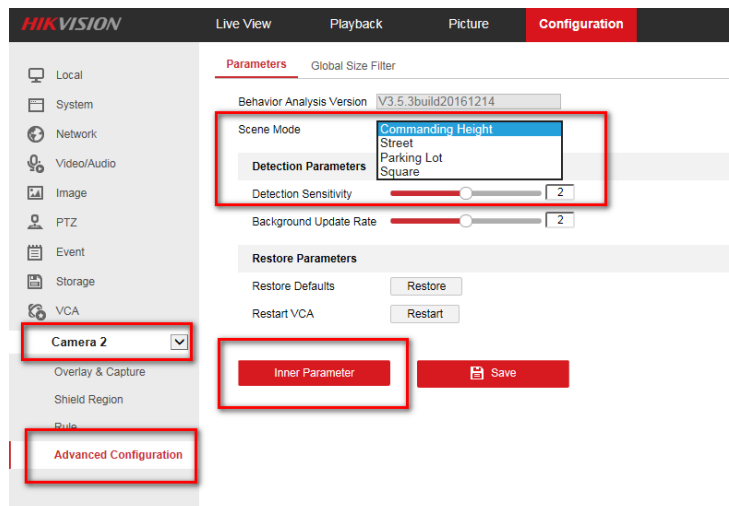


Figure 3 Set self-adaptive ratio coefficient

- **Add 4+1 live view way for DS-2DP1636Z-D.**
- **Add exposure synchronization function for DS-2DP1636Z-D, in order to ensure the channel 2 and channel 3 have the same exposure performance.**

### 3, Optimization

- **Optimize detection algorithm of panoramic channel, add advanced configuration and inner parameter. Scene mode contains commanding height, street, parking lot and square. Inner parameter is used for R&D remote debugging.**



### 4, Delete

- **Take into consideration the security factor, delete the HiDDNS, IPServer from all products. Default is DynDNS.**

## Compatibility Update

- **ISAPI version: V2.0;**
- **ONVIF version: V2.4, only test by NVR;**
- **Genetec Omnicast: 4.8 SR8.**

## Customer Impact and Recommended Action

This update refers to function/compatibility improvement and will take effect automatically after the Date of Change. We are very sorry for any inconvenience of use-habit changes caused by this action. For any questions and request for this firmware, please contact our local technical support team.

### **Remarks:**

- Hikvision reserves the right to change, alter or withdraw the above notification without prior notice.
- Product design and specifications are subject to change without prior notice.
- The Hikvision firmware may contain defects or errors known as errata which may cause the product to deviate from published specifications. Current characterized errata are available on request.
- Hikvision is not liable for any typing or printing errors.