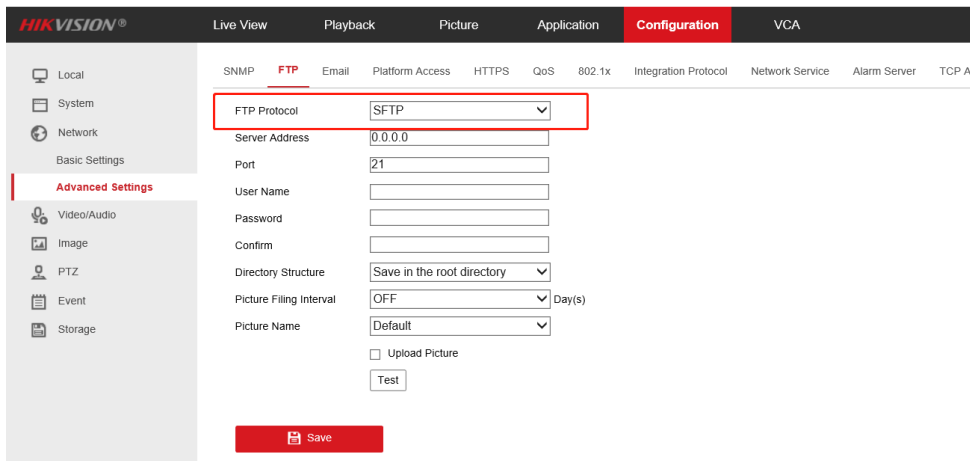


PTZ Camera Firmware Version: V5.7.13 SP1 Release Note

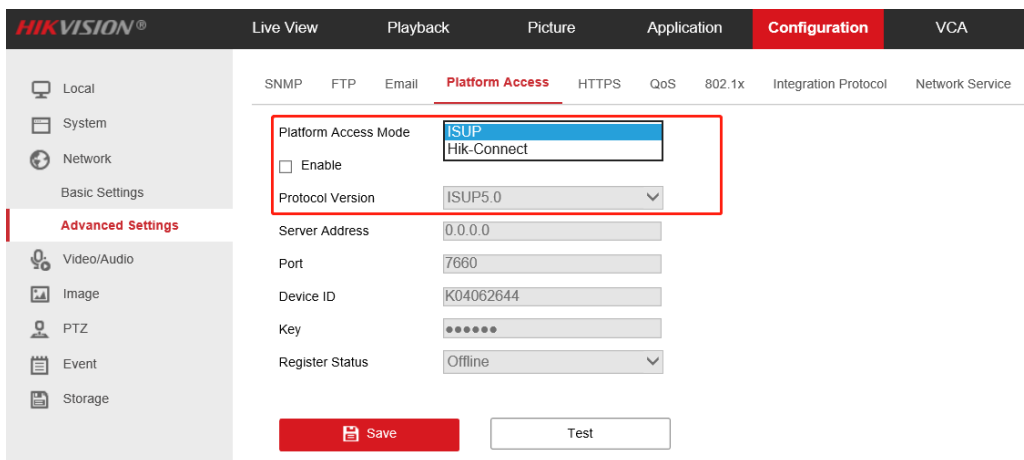
Firmware Basic Information	Firmware Version: IPDE_G5H8_EN_5.7.13_221111
---------------------------------------	--

1. New Features

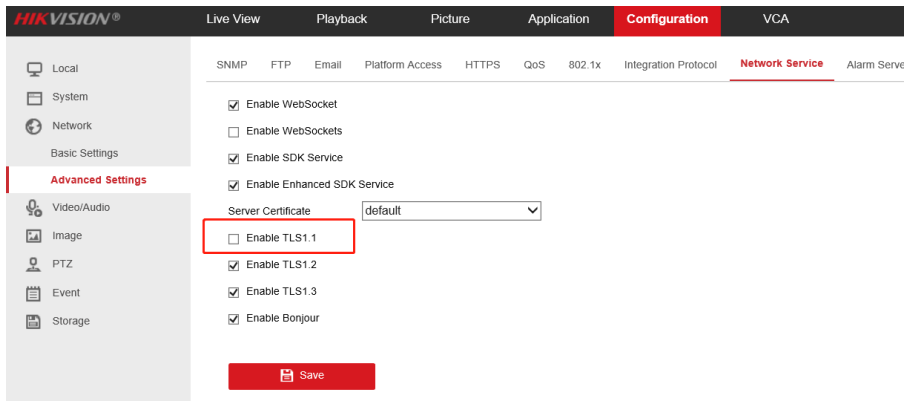
- ① Fixed vertical stripes in previews
- ② Support Edge(79.0.309.65 and above) browser for fast automatic calibration
- ③ Added support for SFTP



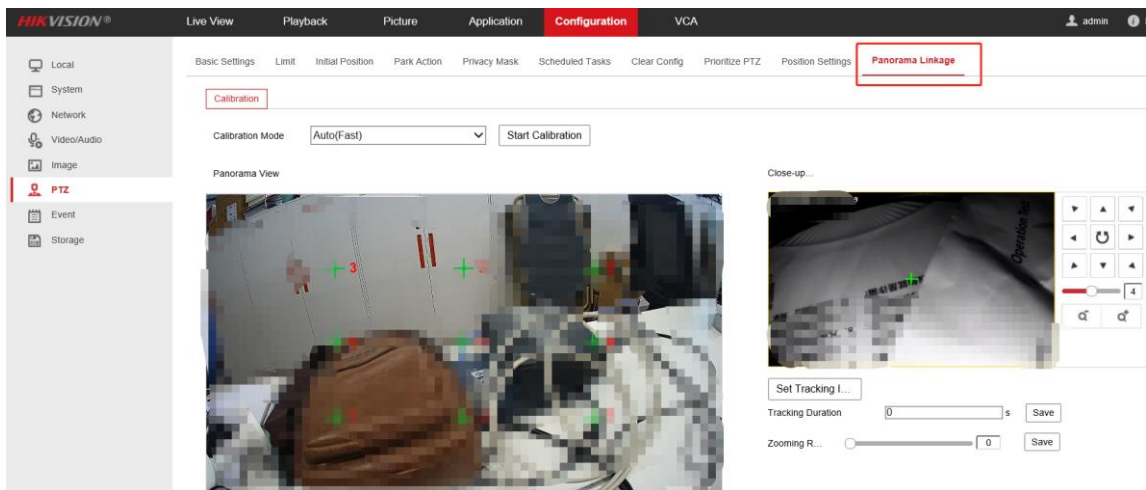
- ④ With ehome2.0 and 4.0 removed, Hik-Connect is disabled by default



- ⑤ The default value of TLS1.1 is disabled

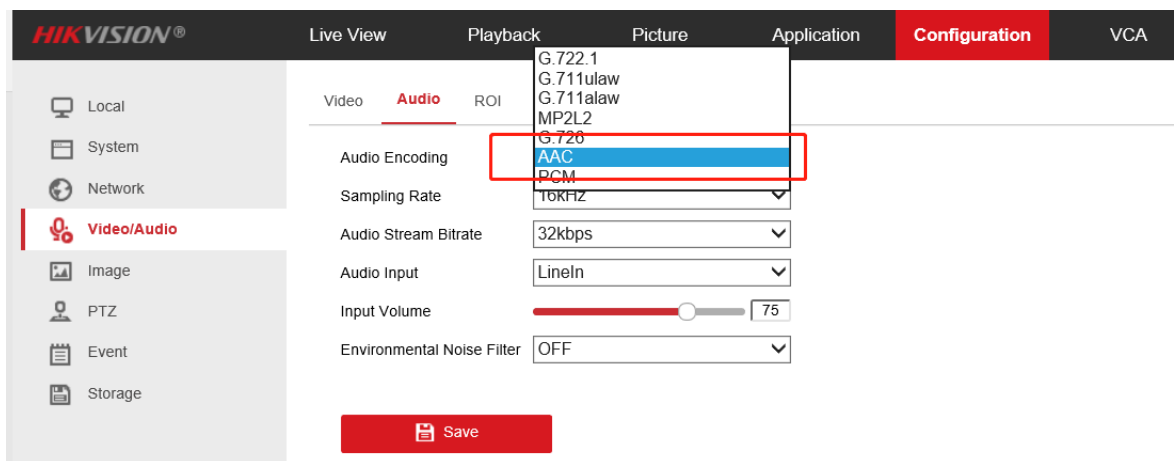


- ⑥ The name of the panorama tracking page is changed to "Panorama Linkage", and a prompt message is added when fast automatic calibration failed



- ⑦ The 4-inch PTZ does not support panoramic linkage, takeover tracking, and circular tracking

- ⑧ Supports AAC



- ⑨ Support Hik-Connect online upgrade

2. Improved Features

N/A

Customer Impact and Recommended Action

This update refers to function/compatibility improvement and will take effect automatically after the Date of Change. We are very sorry for any inconvenience of use-habit changes caused by this action. For any questions and request for this firmware, please contact our local technical support team.

Remarks:

- Hikvision reserves the right to change, alter or withdraw the above notification without prior notice.
- Product design and specifications are subject to change without prior notice.
- The Hikvision firmware may contain errors known as errata which may cause the product to deviate from published specifications. Current characterized errata are available on request.
- Hikvision is not liable for any typing or printing errors.

Hikvision Digital Technology CO., Ltd.
No. 555 Qianmo Road, Binjiang District, Hangzhou
310051, China
Tel: +86-571-8807-5998

Supported Product List	
Product Category	Model Number
PTZ Camera	DS-2SE4C215MWG-E(12F0) DS-2SE4C225MWG-E(12F0) DS-2SE4C415MWG-E(14F0) DS-2SE4C425MWG-E(14F0)