

## **2nd Gen Indoor Station Firmware V2.1.60\_build220815 Release Note (2022-08-23)**

Device Model	DS-KH8350-WTE1、DS-KH8350-TE1、DS-KH6320-WTE1、DS-KH6320-WTE2、DS-KH6320-WTE2(B)、DS-KH6320-TE1、DS-KH8520-WTE1
Firmware Version	V2.1.60_build220815
iVMS-4200 Version	Latest version
Hik-Connect APP	Latest version

Fix some bugs for R&D testing

## 2nd Gen Indoor Station Firmware V2.1.52\_build220720 Release Note (2022-07-20)

Device Model	DS-KH8350-WTE1、DS-KH8350-TE1、DS-KH6320-WTE1、DS-KH6320-WTE2、DS-KH6320-WTE2(B)、DS-KH6320-TE1、DS-KH8520-WTE1
Firmware Version	V2.1.52_build220720
iVMS-4200 Version	Latest version
Hik-Connect APP	Latest version

### Add

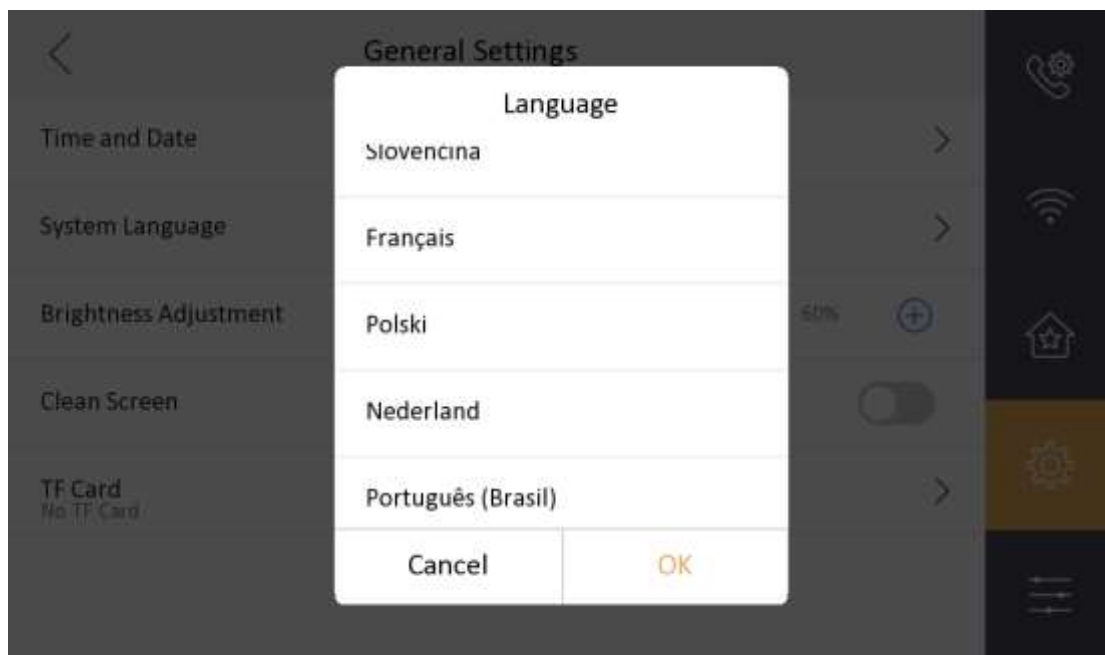
1. Supports static IP address configuration of Wi-Fi (DHCP, IP address, subnet mask, gateway, DNS1, DNS2).



2. Supports configuring time and time zone for the door station.

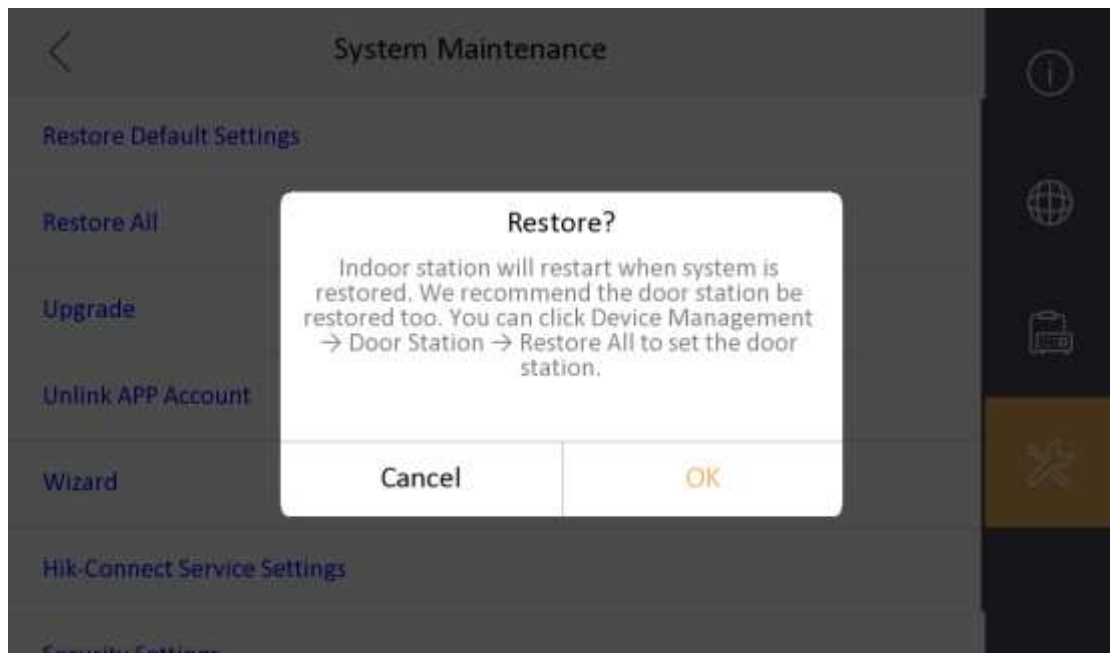


3. Supports C-S registration mode of indoor station and master station.
4. Supports two new languages (standard Portuguese and Slovak).

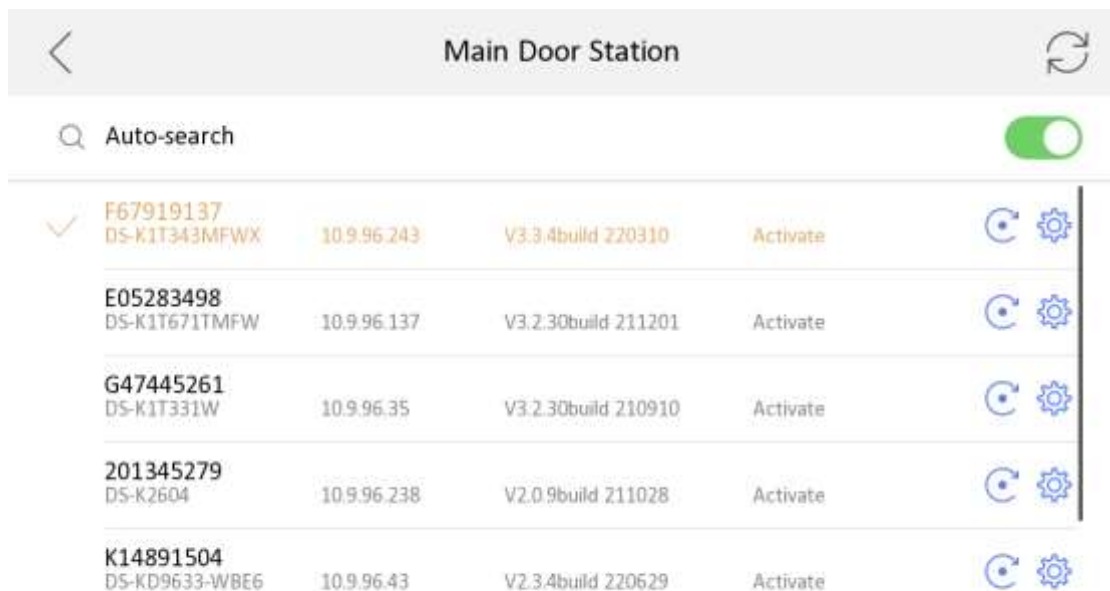


## Fix

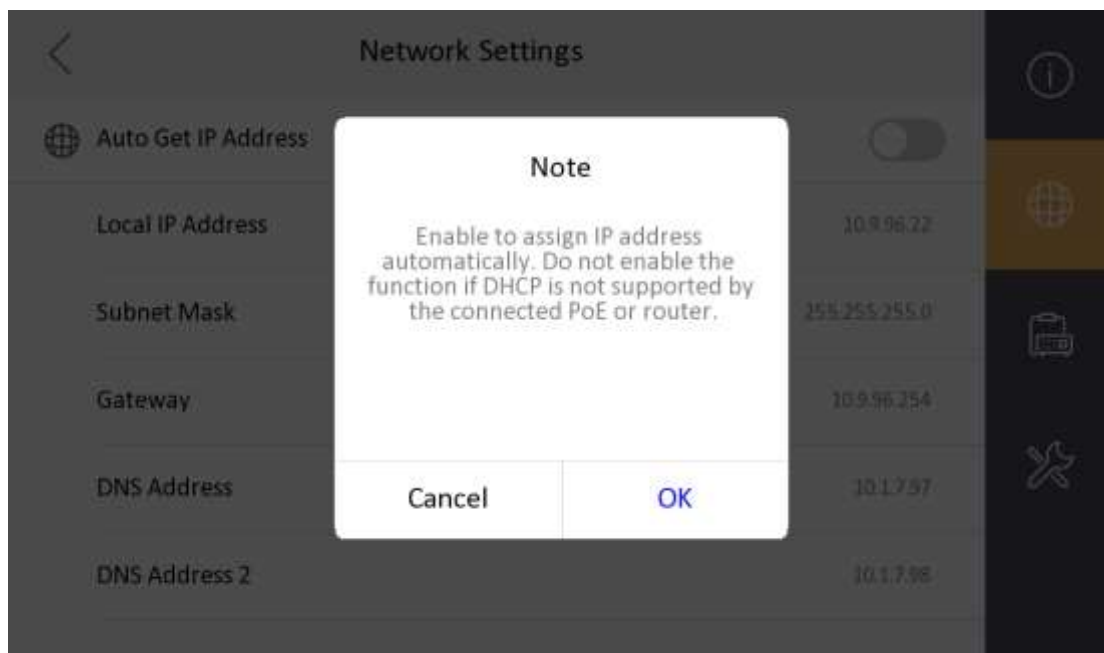
1. Optimizes the maintenance interface with a pop-up window when clicking **Restore** or **Restore All**.



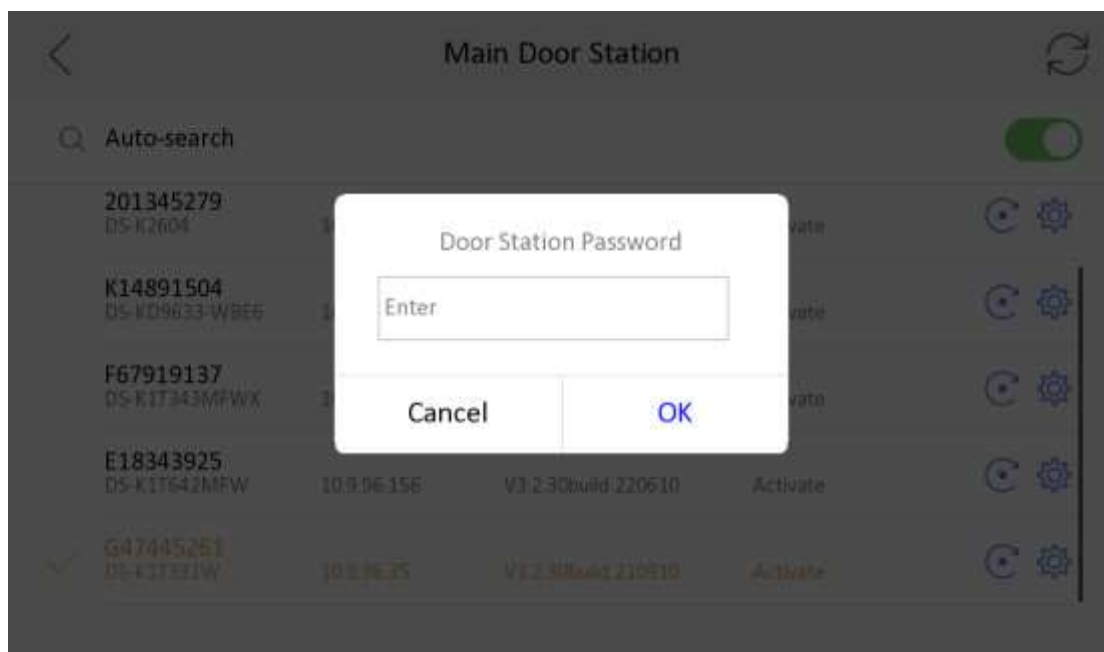
2. Adds the effect of selected door station when relating devices in wizard.



3. Adds a prompt when assigning network IP address automatically.



4. In configure wizard to related door station, when the door station password is different from the indoor station, prompt information will pop.



## 2nd Gen Indoor Station Firmware V2.1.46\_build220607 Release Note (2022-06-20)

Device Model	DS-KH8350-WTE1、DS-KH8350-TE1、DS-KH6320-WTE1、DS-KH6320-WTE2、DS-KH6320-WTE2(B)、DS-KH6320-TE1、DS-
--------------	--

	KH8520-WTE1
Firmware Version	V2.1.40_build220607
iVMS-4200 Version	Latest version
Hik-Connect APP	Latest version

**Fix**

1. Repair the defects left by system testing;
2. Fix the vulnerability defect of userid product;
3. Fix the defect that the abnormal processing of the database encryption and decryption interface will cause the interface to jam;
4. Repair the call defect of incompatible third-party door-to-door machine;

# 2nd Gen Indoor Station Firmware V2.1.40\_build220428 Release Note (2022-05-13)

Device Model	DS-KH8350-WTE1、DS-KH8350-TE1、DS-KH6320-WTE1、DS-KH6320-WTE2、DS-KH6320-WTE2(B)、DS-KH6320-TE1、DS-KH8520-WTE1
Firmware Version	V2.1.40_build220512
iVMS-4200 Version	Latest version
Hik-Connect APP	Latest version

### Fix

- Optimize registration password settings in Wizard.

Wizard-Indoor Station Settings 3/5

Device Type
Indoor Station >

---

Floor No.

1

---

Room No.

1

The password might be required when linking indoor stations to door stations or main stations.

---

! Registration Password

Not configured. >

Be consistent with the activation password.

---

Indoor Extension Settings

Previous
Next
Skip

Wizard-Indoor Station Settings 3/5

Device Type
Indoor Station >

---

Floor No.

1

---

Room No.

1

---

! Registration Password

Not configured. >

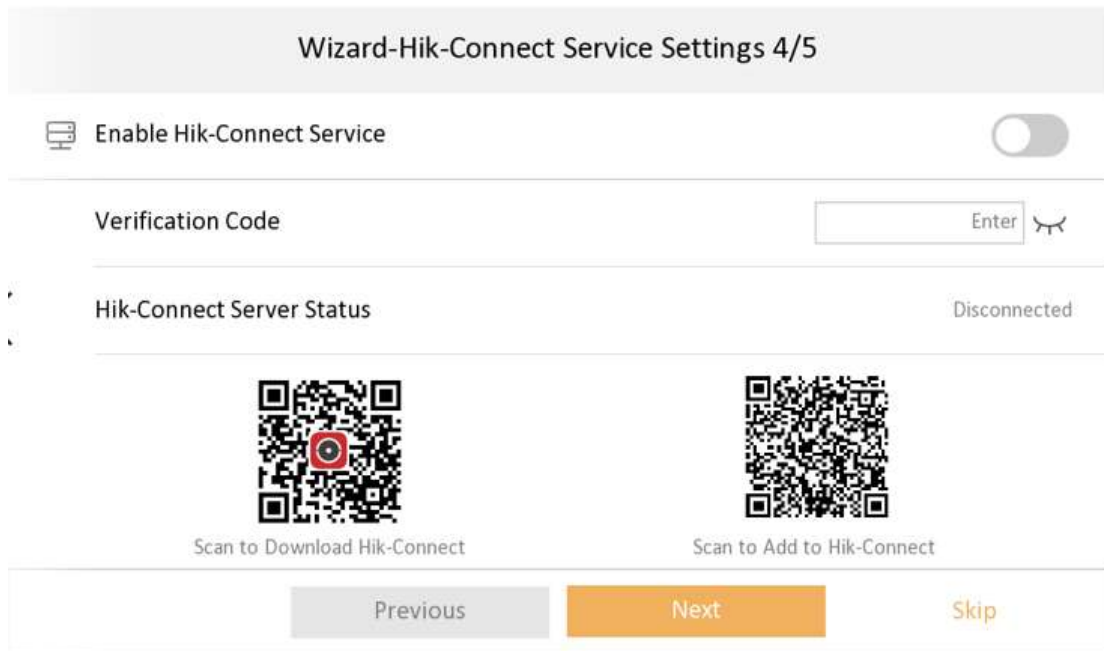
Be consistent with the activation password.  
When enabled, the people who has the registration password will have the device admin permissions.

---

Indoor Extension Settings

Previous
Next
Skip

2. Optimize Hik-Connect password configuration page.



3. Support stream transmission mode settings, you can select Unit Broadcast or Group Broadcast.



4. Fixed some known bugs.



## 2nd Gen Indoor Station Firmware V2.1.34\_build211118 Release Note (2021-11-22)

Device Model	DS-KH8350-WTE1、DS-KH8350-TE1、DS-KH6320-WTE1、DS-KH6320-WTE2、DS-KH6320-WTE2(B)、DS-KH6320-TE1、DS-KH8520-WTE1
Firmware Version	V2.1.34_build211118
iVMS-4200 Version	Latest version
Hik-Connect APP	Latest version

### Fix

5. Fixed some bugs.

## 2nd Gen Indoor Station Firmware V2.1.32\_build210926 Release Note (2021-09-30)

Device Model	DS-KH8350-WTE1、DS-KH8350-TE1、DS-KH6320-WTE1、DS-KH6320-WTE2、DS-KH6320-WTE2(B)、DS-KH6320-TE1、DS-KH8520-WTE1
Firmware Version	V2.1.32_build210926
iVMS-4200 Version	Latest version
Hik-Connect APP	Latest version

### Fix

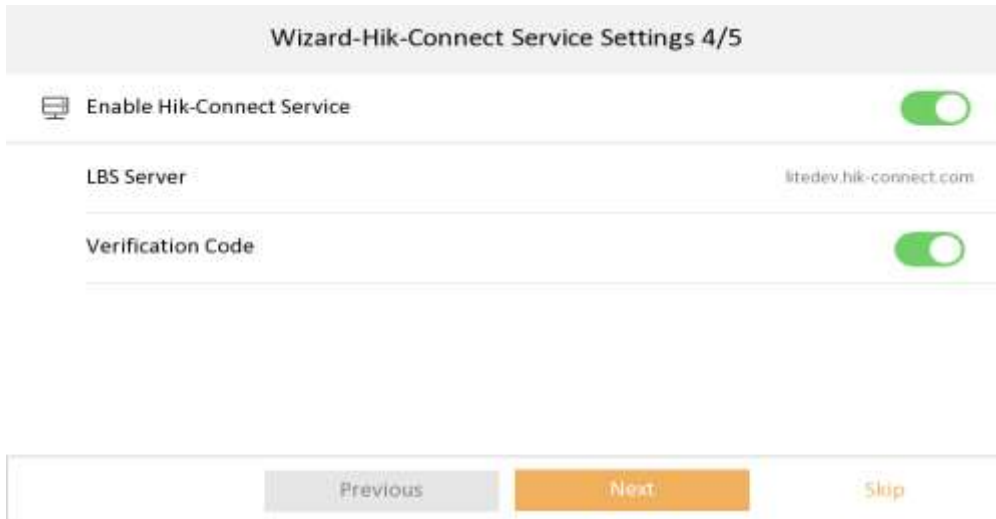
1. Solve production line related problems.

## 2nd Gen Indoor Station Firmware V2.1.26\_210803 Release Note (2021-08-19)

Device Model	DS-KH8350-WTE1、DS-KH8350-TE1、DS-KH6320-WTE1、DS-KH6320-WTE2、DS-KH6320-WTE2(B)、DS-KH6320-TE1、DS-KH8520-WTE1
Firmware Version	V2.1.26_210803
iVMS-4200 Version	Latest version
Hik-Connect APP	4.13.1 or above

### Modify

1. Verification code is empty by default.



2. Hik-Connect Service Settings is changed to the place of Settings → Advanced Settings → Configuration → System Maintenance.



3. Fixed some bugs.

## 2nd Gen Indoor Station Firmware

### V2.1.24\_210617 Release Note

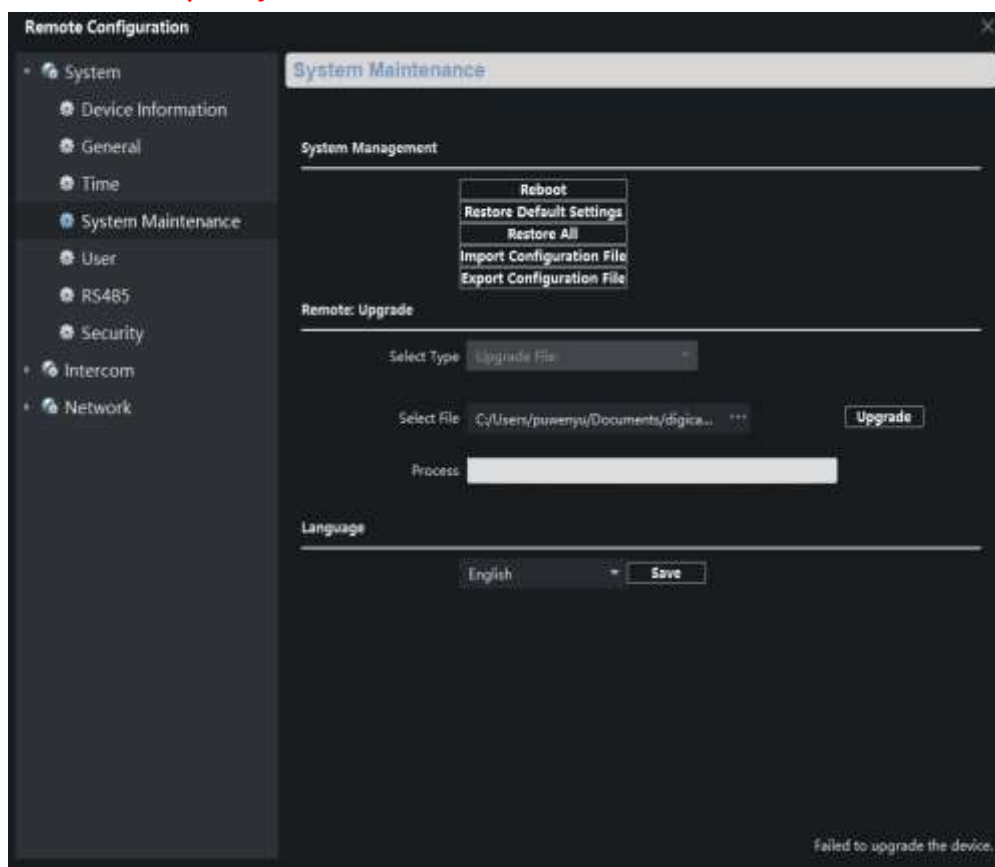
#### (2021-06-22)

Device Model	DS-KH8350-WTE1、DS-KH8350-TE1、DS-KH6320-WTE1、DS-KH6320-WTE2、DS-KH6320-WTE2(B)、DS-KH6320-TE1、DS-KH8520-WTE1
Firmware Version	V2.1.24_210617
iVMS-4200 Version	Latest version
Hik-Connect APP	4.13.1 or above

#### Modify

1、 **Since V2.1.24 build 210617, remote degradation of devices is not supported in all subsequent versions.** When degradation occurs, it will prompt Failed to upgrade the device and the device will restart.

**Notice: Although the device can be degraded by serial port, the device will fail to start and cannot change the version by using serial port again, which means that the device will be completely unusable.**



- 2、 Fixed some bugs
- 3、 The firmware is compatible with materials which are switched due to supply shortage.

## 2nd Gen Indoor Station Firmware V2.1.20\_210420 Release Note (2021-04-30)

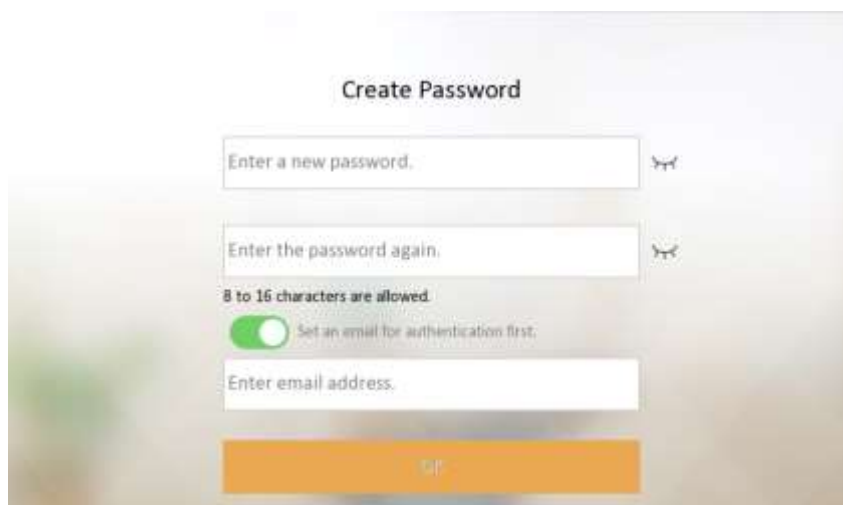
Device Model	DS-KH8350-WTE1、DS-KH8350-TE1、DS-KH6320-WTE1、DS-KH6320-WTE2、DS-KH6320-WTE2(B)、DS-KH6320-TE1、DS-KH8520-WTE1
Firmware Version	V2.1.24_210617
iVMS-4200 Version	Latest version
Hik-Connect APP	4.13.1 or above

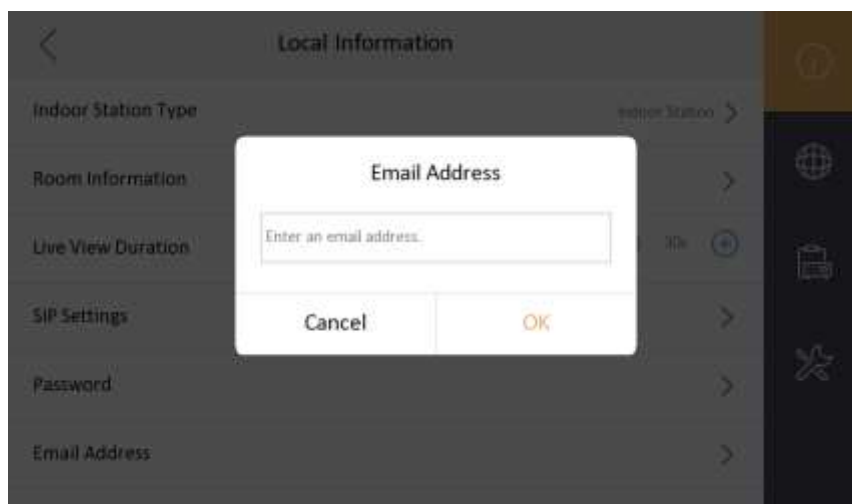
### NOTE

Registration password will correspond to the serial number to prevent other devices from invading the system

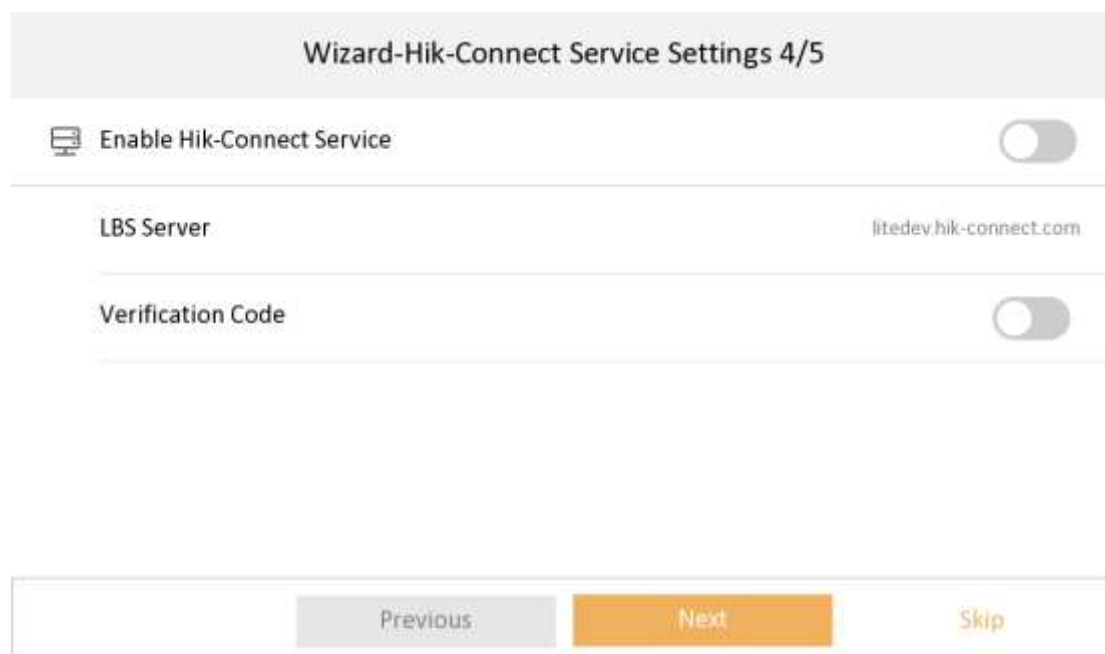
### New Function

1. Local interface support to modify the password through email authentication







2. Support Hik-Connect configuration, closed by default



3. Newly added multi-language Croatian, Dutch, Romanian, Czech, Bulgarian, Croatian, Serbian
4. Add IPC interface, when Open Network Video Intercom protocol is selected, add plaintext ciphertext switch menu item configuration

 **Add Device**

---

Protocol Settings Open Network Video Interface 

---

Device Name Enter the device name.


---

IP Address Enter the IP address.

---

User Name Enter the user name.

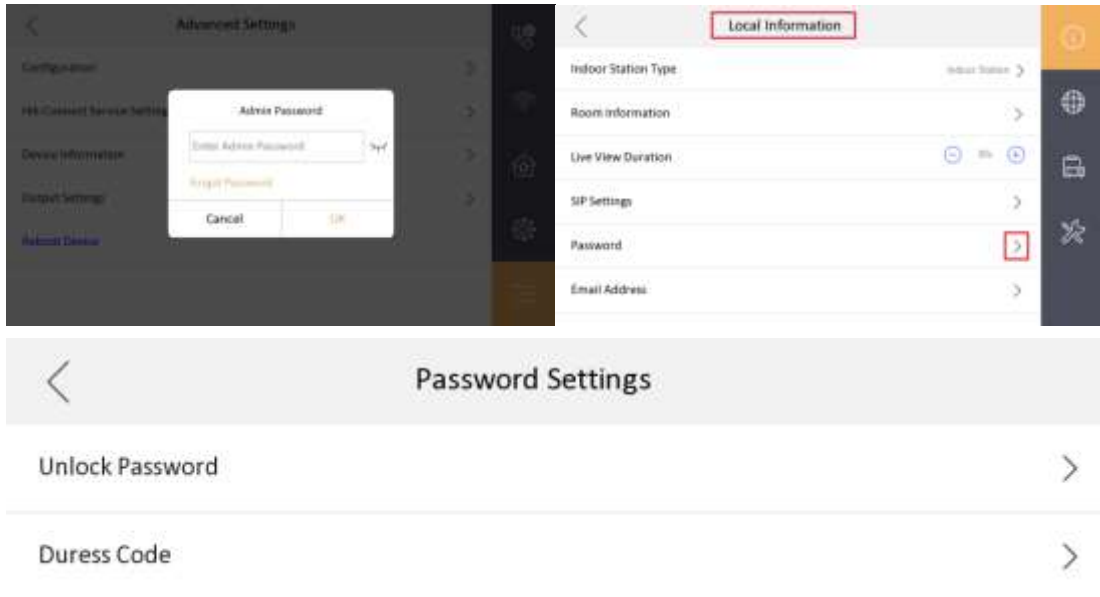
---

Password Enter the password. 

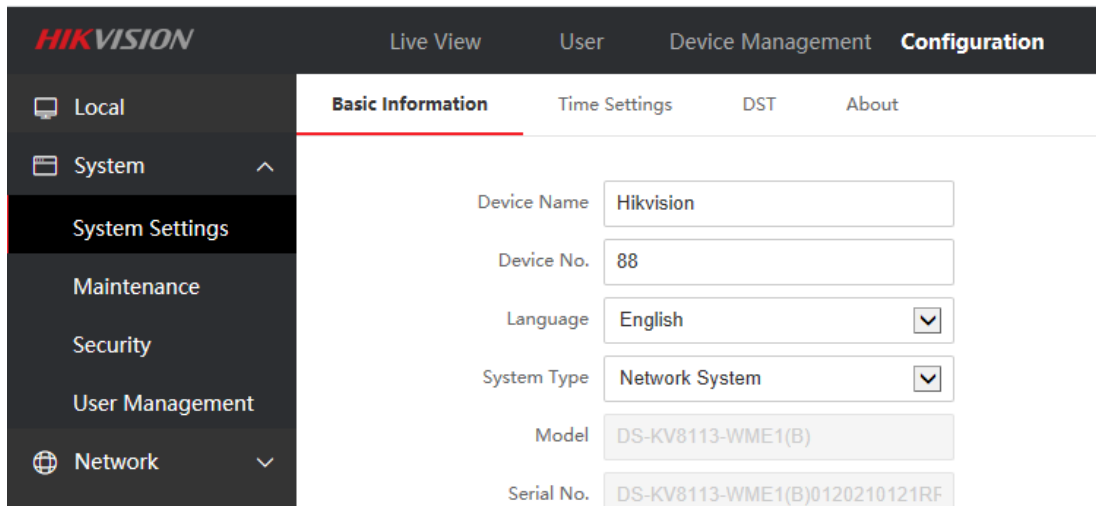
---

**Modify**

1. Change the position of unlock password and duress code, to enter the password page requires an admin (activation) password.



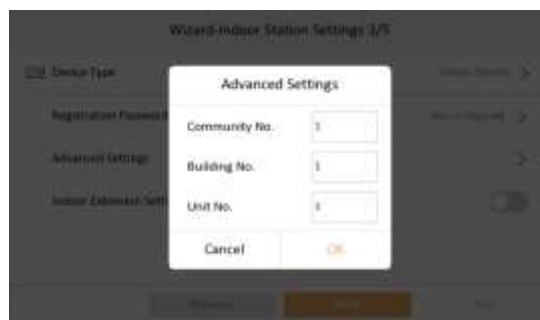
2. When changing the unlock password and duress code, the old password is not required as a credential.
3. The name of the local private SIP password configuration Sip Password is uniformly changed to Registration Password
4. The changed name of the door station(KD8003 modular door station, KV(-B), KB8113) will be displayed on the call interface or live view interface of the indoor station



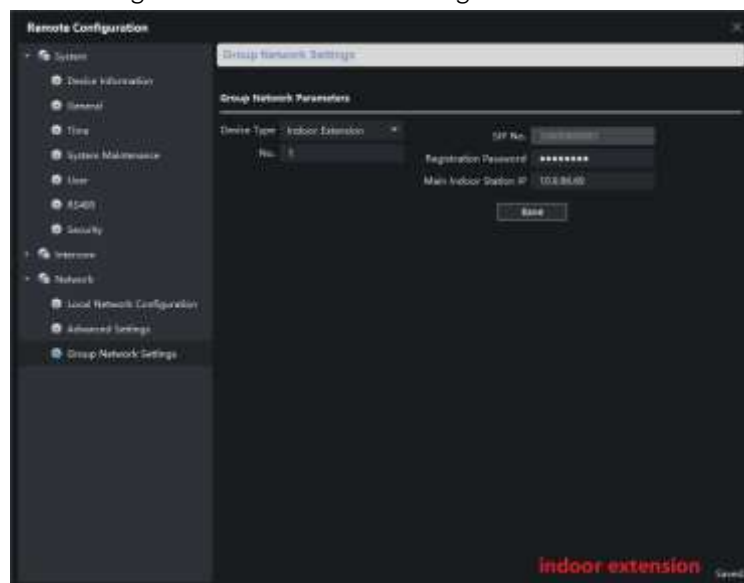




5. The local interface community number, building number, and unit number of the indoor station will be stored in the advance column instead of being displayed directly



6. The method of adding indoor extensions is changed to the same method as protocol 1.0



## 2nd Gen Indoor Station

### V2.1.10\_build201208 Release Note

#### (2020-12-28)

Device Model	DS-KH8350-WTE1、DS-KH8350-TE1、DS-KH6320-WTE1、DS-KH6320-WTE2、DS-KH6320-WTE2(B)、DS-KH6320-TE1、DS-KH8520-WTE1
Firmware Version	Indoor Station: v2.1.10_build201208

#### **Fix**

- (1) Solve the problem that the door station calls the indoor station, the indoor station refuses to answer, and the HC does not hang up
- (2) Solve the problem that the local SADP of the indoor station cannot search for the MinMoe device when docking with the latest version of Minmoe
- (3) Solve the problem that when the indoor station is added to the MinMoe device, MinMoe device will restart
- (4) Solve the problem that when the activation password of the indoor station contains a capital M, the door station can only call through the main indoor station, but not to the indoor extension

## 2nd Gen Indoor Station

### V2.1.10\_build201207 Release Note

### (2020-12-27)

Device Model	DS-KH8350-WTE1、DS-KH8350-TE1、DS-KH6320-WTE1、DS-KH6320-WTE2、DS-KH6320-WTE2(B)、DS-KH6320-TE1、DS-KH8520-WTE1
Firmware Version	Indoor Station: v2.1.10_build201207

#### Fix some bugs



## 2nd Gen Indoor Station

### V2.1.10\_build200713 Release Note

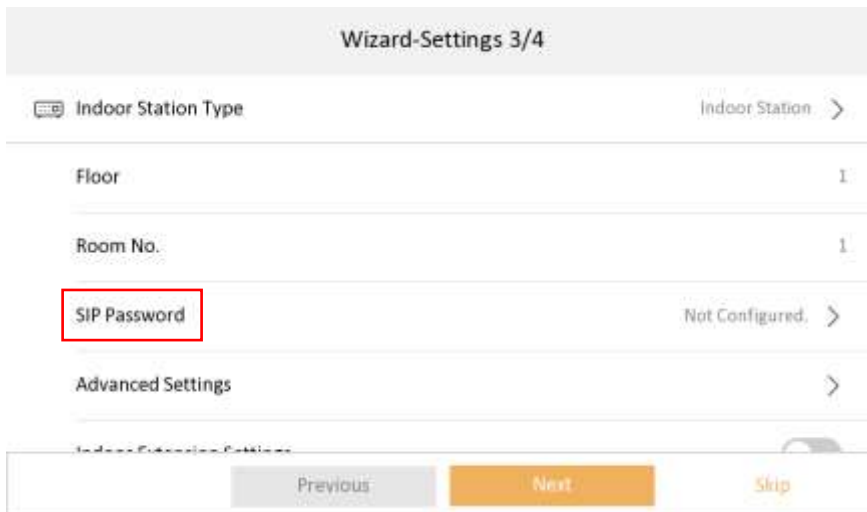
#### (2020-07-27)

Device Model	DS-KH8350-WTE1、DS-KH8350-TE1、DS-KH6320-WTE1、DS-KH6320-WTE2、DS-KH6320-WTE2(B)、DS-KH6320-TE1、DS-KH8520-WTE1
Firmware Version	Indoor Station: v2.1.10_build200713
iVMS-4200 Version	V3.3.1.4 build 20200806
Hik-Connect APP	4.6.2.0724

#### New Function

##### 1. Higher security, SIP Passwords (Register Passwords)

SIP password is actually Register Password, which is suitable for our security 2.0 protocol. They can communicate normally only when the **SIP passwords (Register passwords)** of the door station, indoor station and indoor extension are the **same**.

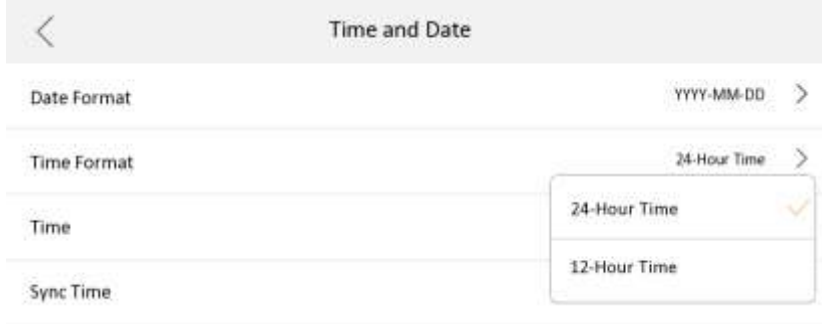


2. Support three date formats, two clock format configuration (Time format only allows local modification)

1) Support three formats in Settings->General Settings->Time and Date interface, set year-month-day, day-month-year, month- day - year

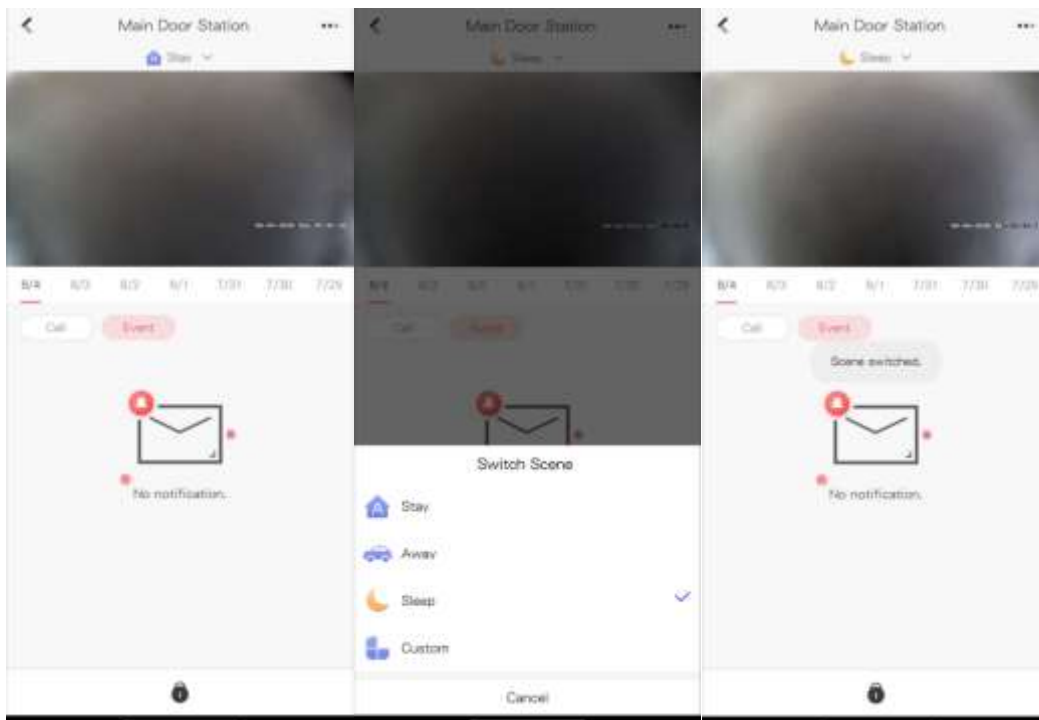


2) Support the Settings->General Settings->Time and Date interface, set the 12-hour system, 24-hour system two formats, and the default setting is 24-hour system display.



3. Multi-language added to 12 countries: English, French, Portuguese (Brazil), Spanish, Russian, German, Italian, Polish, Arabic, Turkish, Vietnamese, Ukrainian.

4. The indoor station supports remote scene switching through Hik-Connect, including four modes: Stay, Away, Sleeping and Custom.



When the indoor station is not currently configured with the arm/disarm password, the Hik-Connect switching scene will fail, and indoor station will send an error code to Hik-Connect App

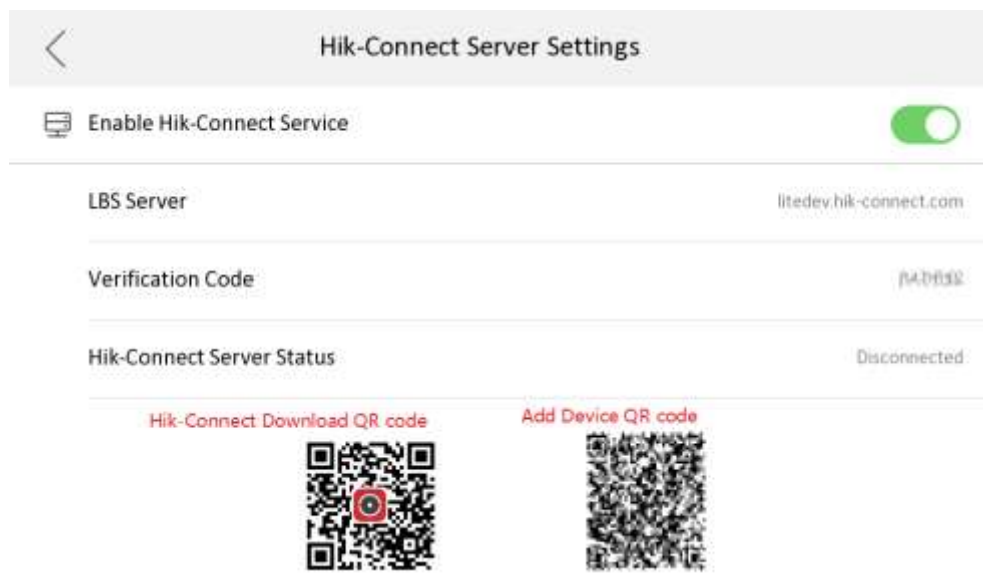
5. Support whether to enable the call management center function, it is disabled by default

6. Support whether to enable the leave message function, it is disabled by default

1) In the Settings->More->Preference->Shortcut Settings interface



7. Add the QR code of Hik-Connect App download address to the indoor station Hik-Connect configuration interface



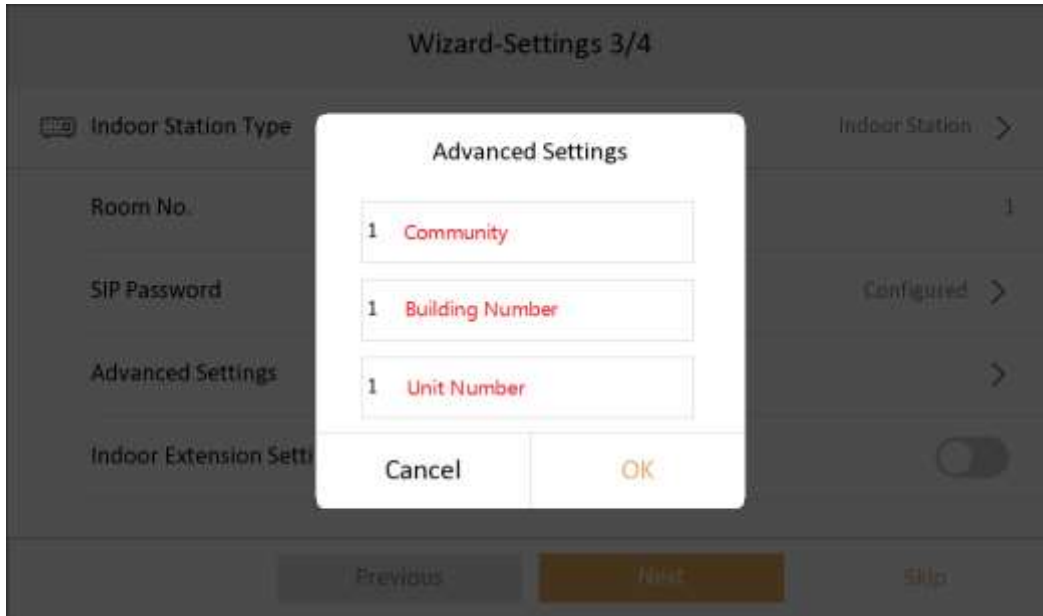
Indoor Station local UI, SADP tool, Hik-connect support fluorite account unbinding



## Hikvision Video Intercom v2.0 Protocol

The communication protocol between Hikvision devices uses a secure private call protocol, and the communication with 3<sup>rd</sup> party devices uses standard SIP;

1) Support setting period number, building number, and room number on the indoor station;



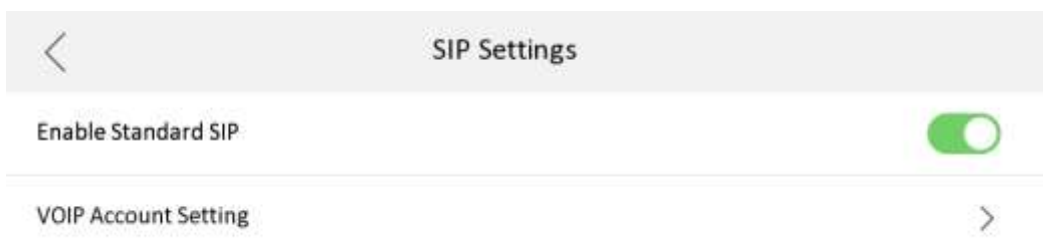
2) Support remote configuration of indoor extension information through the main indoor station;



3) Standard SIP and private SIP integration:

a) The indoor station does not need to switch to SIP mode;

b) The standard SIP of the indoor station is disabled by default, if you want to connect to a third-party standard SIP device, you need to turn on this function.

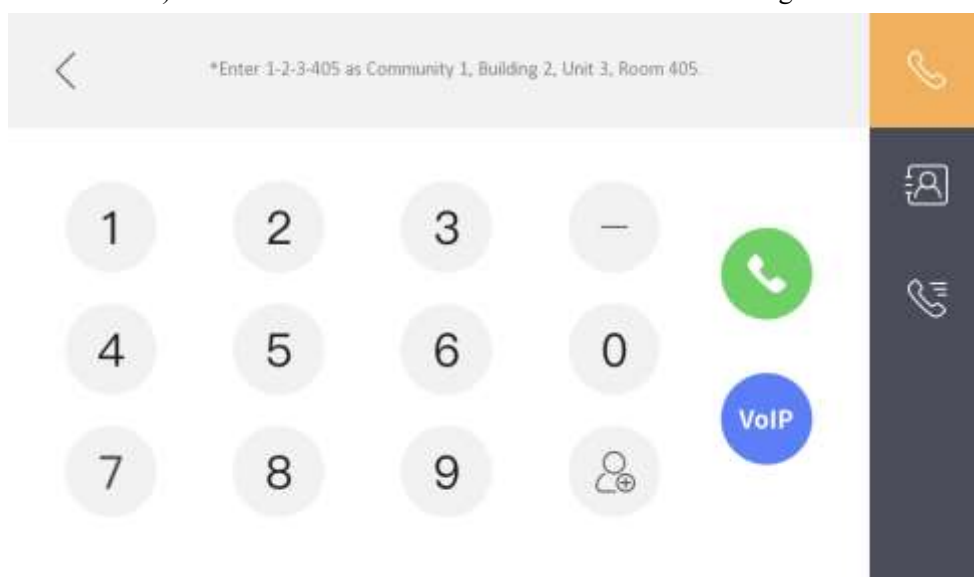




c) A standard SIP registration status icon is added to the main interface, which can be displayed/hidden according to whether standard SIP is enabled;



d) Added a VoIP call button in the call interface to distinguish standard SIP calls



4) Supports two audio formats, G.711U and G.711A. (And G.711U priority is greater than G.711A)

### **NOTE:**

1. At present, the indoor station can support customization requirements of more than 5 extensions;
2. The description of ONVIF in the local UI of the indoor station is uniformly changed to open network video interface.
3. The main indoor station and indoor extension must use the same firmware version. And starting from this firmware version, the 1<sup>st</sup> generation video intercom indoor station will not be compatible as a main indoor station or indoor extension to connect this 2<sup>nd</sup> generation firmware version system.