

Indoor Station Firmware V2.2.2_build221129

Release Note (2022-12-02)

Device Model	DS-KH8350-WTE1, DS-KH8350-TE1, DS-KH6320-WTE1, DS-KH6320Y-WTE2, DS-KH6320-WTE2(B), DS-KH6320-TE1, DS-KH8520-WTE1
Firmware Version	V2.2.2_build221129
iVMS-4200	V3.8.3.1 or later

Recommended Firmware

It is recommended to use the following devices and version together, because they can cooperate and work normally after the docking test.

Device type	Test model	Version
Door station	KD8003	SIP1.0: V2.0.8_build200701
	KD8003(B)	SIP2.0: V2.2.58_build220725
	KV6113(B)/KV8X13(B)	V2.2.53_build220816
	KV6113(C)	V2.2.55_build220816
Indoor Station	DS-KH6320-LE1	V1.4.62_build220414
Main Station	KM9503	V1.0.36_build220619

Notes:

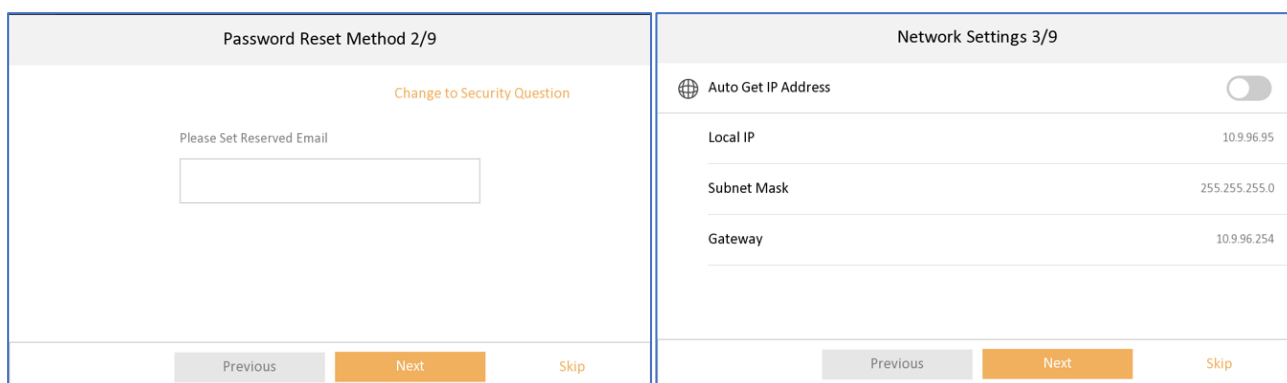
Test records only contain the cases for normally devices and do not represent all the scenarios and all the functions.

Reason of Upgrade

Add new feature, fix bugs, enhance products quality and meet customers' requirements.

New Features

1. The wizard is fully optimized
 - a. Including language, password reset settings, network settings, main and sub door station, Hik-Connect setting and synchronous the time to door station after the wizard ends



- b. Configuring indoor station and extension mode, after ticking, the registration password will be consistent with the activation password

Indoor Station Settings 4/9	
Device Type	Indoor Station >
Floor No	1
Room No	1
Advanced	>
Registration Password	Configured >
<input type="checkbox"/> Same as the admin password.	
<div style="display: flex; justify-content: space-between;"> Previous Next Skip </div>	



c. Wi-Fi settings(available on model with W only), DHCP or set manually

Wi-Fi 5/9	Wi-Fi Settings										
<div style="text-align: right;"> <input type="checkbox"/> </div> <p>Enable the Wi-Fi function to connect an available Wi-Fi.</p> <div style="display: flex; justify-content: space-between;"> Previous Next Skip </div>	<div style="display: flex; justify-content: space-between;"> < Wi-Fi Settings > </div> <div style="display: flex; justify-content: space-between;"> Auto Get IP Address <input type="checkbox"/> </div> <table border="1"> <tr><td>Local IP Address</td><td>192.168.208.57</td></tr> <tr><td>Subnet Mask</td><td>255.255.255.0</td></tr> <tr><td>Gateway</td><td>192.168.208.183</td></tr> <tr><td>DNS Address</td><td>192.168.208.183</td></tr> <tr><td>DNS Address 2</td><td>0.0.0.0</td></tr> </table> <p>Disconnect</p>	Local IP Address	192.168.208.57	Subnet Mask	255.255.255.0	Gateway	192.168.208.183	DNS Address	192.168.208.183	DNS Address 2	0.0.0.0
Local IP Address	192.168.208.57										
Subnet Mask	255.255.255.0										
Gateway	192.168.208.183										
DNS Address	192.168.208.183										
DNS Address 2	0.0.0.0										

d. Time settings, including time zone, date&time, time format and DST.

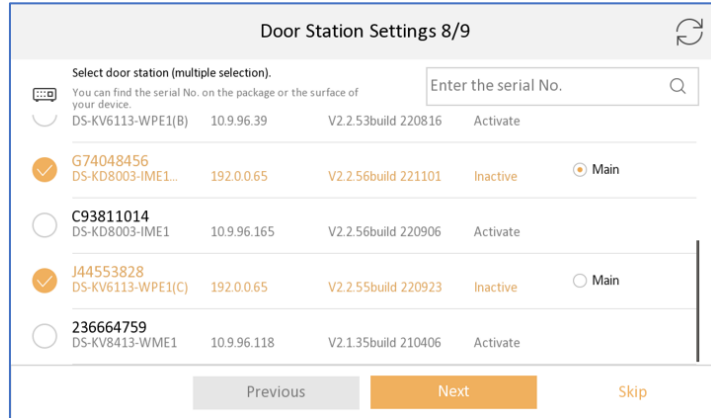
Time Settings 6/9	
Time Zone	(GMT+08:00) Beijing, Urumqi, Singapore >
Date Format	YYYY-MM-DD >
Time Format	24-Hour Time >
Time	2022/10/21 14:33 >
DST	Disable >
<div style="display: flex; justify-content: space-between;"> Previous Next Skip </div>	

e. Hik-Connect related configuration

Call Mobile Phone 7/9	
Enable Hik-Connect Service	<input checked="" type="checkbox"/>
Verification Code	<input type="text" value="6-12 characters are allowed"/>
Hik-Connect Server Status	Disconnected
 Scan to Download Hik-Connect	 Scan to Add to Hik-Connect
<div style="display: flex; justify-content: space-between;"> Previous Next Skip </div>	

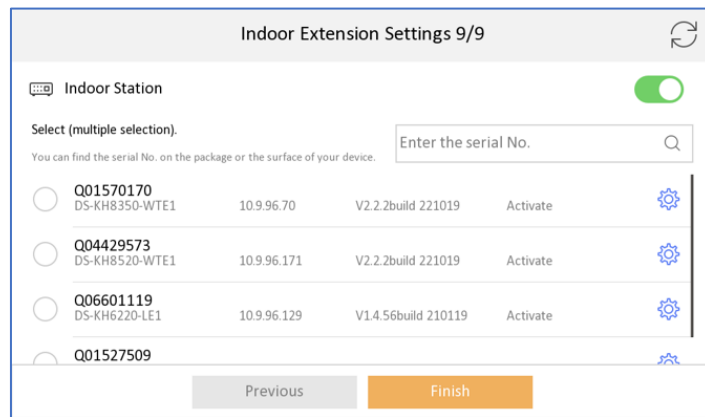
f. Main and sub door linkage

Note: the first selected door station will be the main, the second will be sub1, 3rd will be sub2, etc. Maximum select 17 door station at one time (1 main and 16 sub door stations)



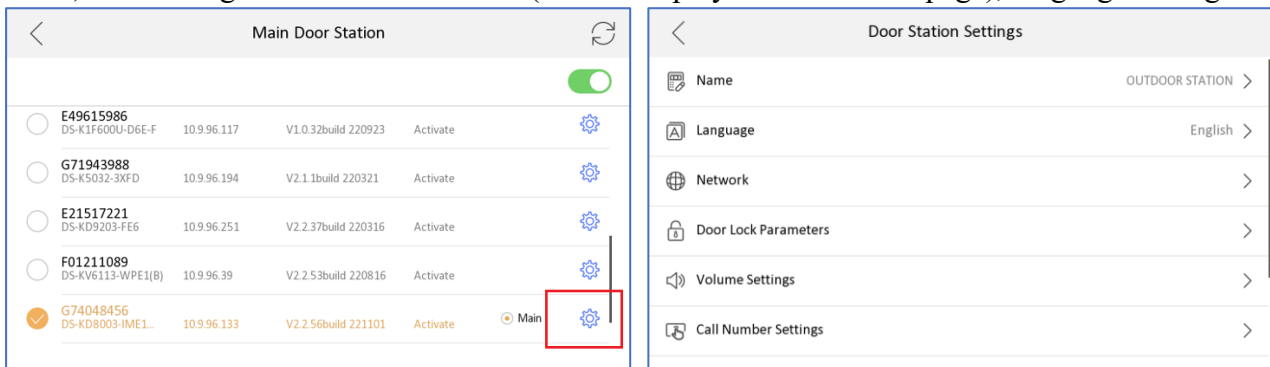
g. Indoor extension linkage

Note: the selected indoor station will be order and numbered as indoor extension 1,2,3... Maximum select 5 indoor extension at one time

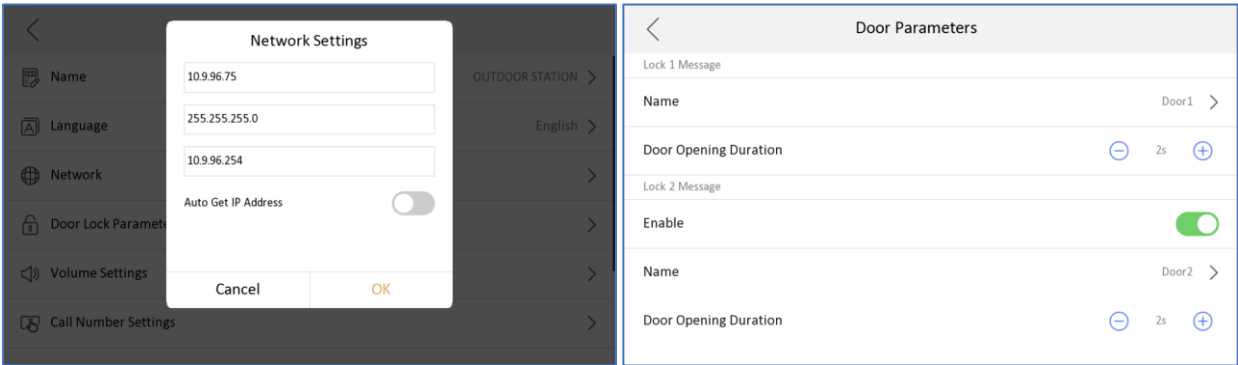


2. Configure the important parameters of door station from indoor station advanced settings menu (not from the wizard).

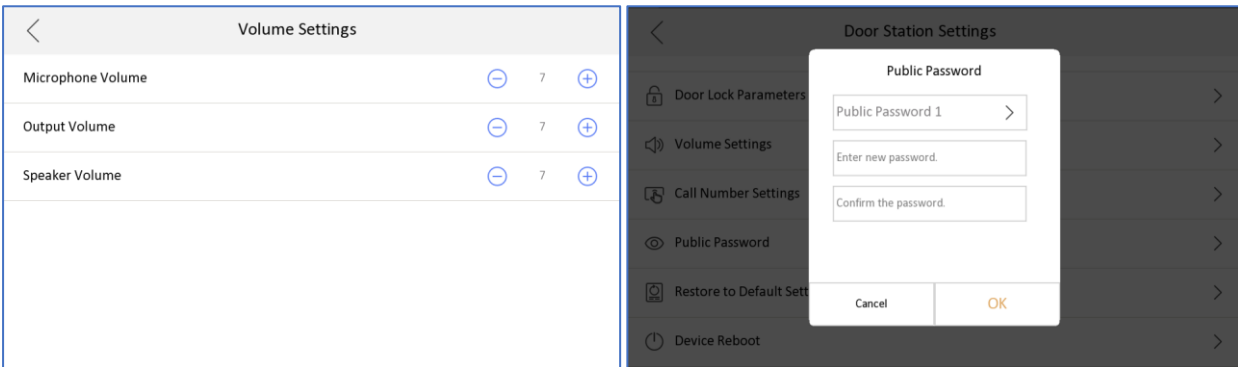
a) including the door station name (will be displayed in live view page), language setting



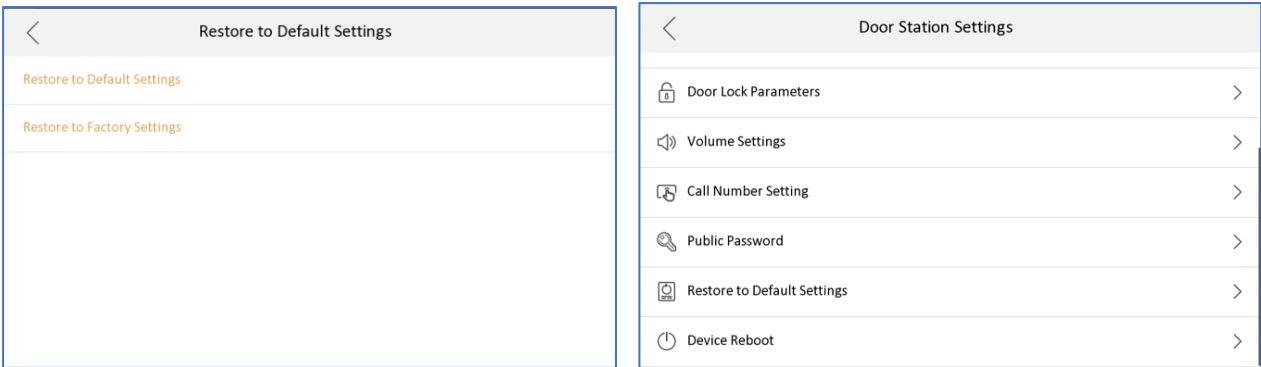
b) IP address, subnet mask, gateway, enable DHCP, lock name, door open duration, enable lock2, etc)



c) Volume setting, door station button call number, public password

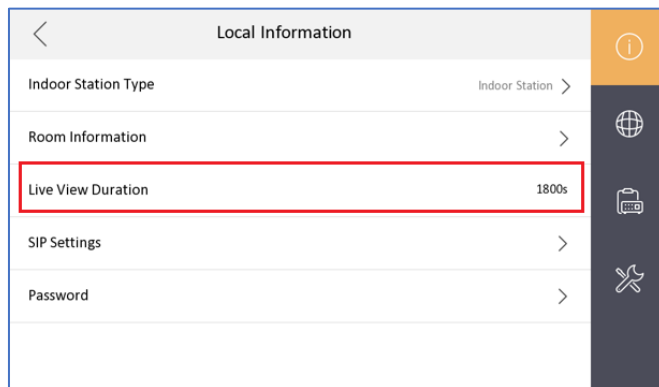


d) Restore and restart door station

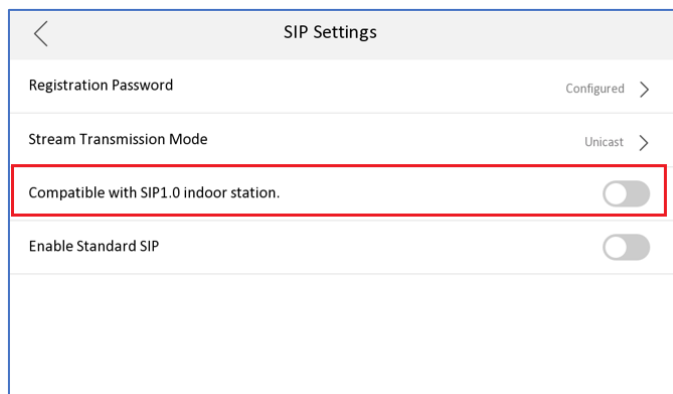


Modified Features

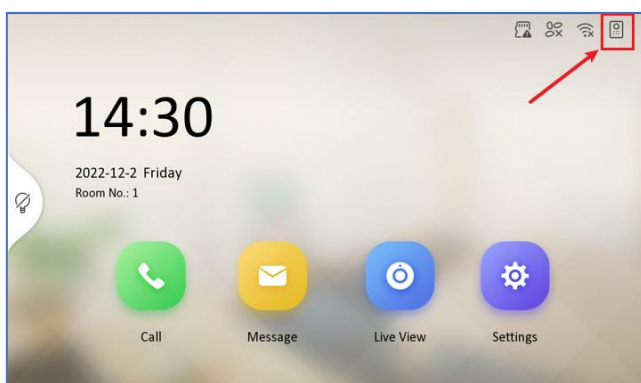
1. Door station and camera live view duration increase to 1,800s, range 10-1,800s, by default 30s.



- Support switching between protocol 1.0 and 2.0, in default it's protocol 2.0
After enable, the indoor station is compatible with protocol 1.0 indoor extension.



- Optimized the icon of door station registration status in the main UI up right corner.



	Before	Now
Indoor station registers to door station success		
Indoor station registers to door station failed		
Indoor station registers to door station and KM9503 success		

Note: If the indoor station registers to door station failed, you can click this icon to register to door station manually, if still failed, It will indicate the reason for registration failure.

2nd Gen Indoor Station Firmware V2.1.52_build220720 Release Note (2022-07-20)

Device Model	DS-KH8350-WTE1、DS-KH8350-TE1、DS-KH6320-WTE1、DS-KH6320-WTE2、DS-KH6320-WTE2(B)、DS-KH6320-TE1、DS-
--------------	--

	KH8520-WTE1
Firmware Version	V2.1.52_build220720
iVMS-4200 Version	Latest version
Hik-Connect APP	Latest version

Add

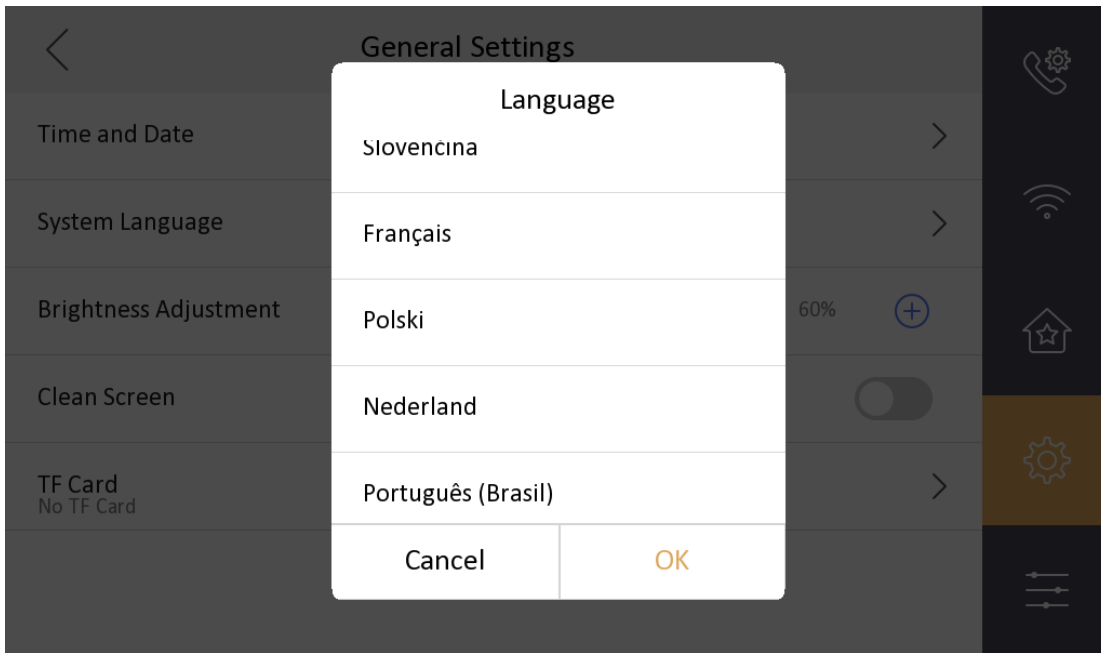
1. Supports static IP address

configuration of Wi-Fi (DHCP, IP address, subnet mask, gateway, DNS1, DNS2).

2. Supports configuring time and time zone for the door station.

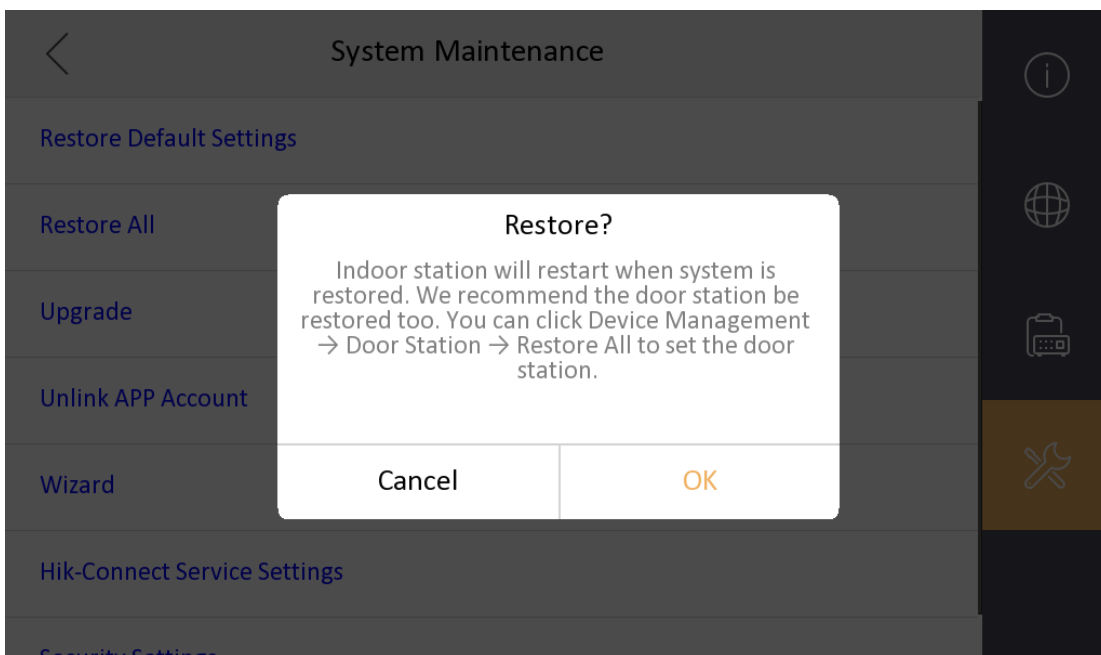
3. Supports C-S registration mode of indoor station and master station.

4. Supports two new languages (standard Portuguese and Slovak).



Fix

1. Optimizes the maintenance interface with a pop-up window when clicking **Restore** or **Restore All**.



2. Adds the effect of selected door station when relating devices in wizard.

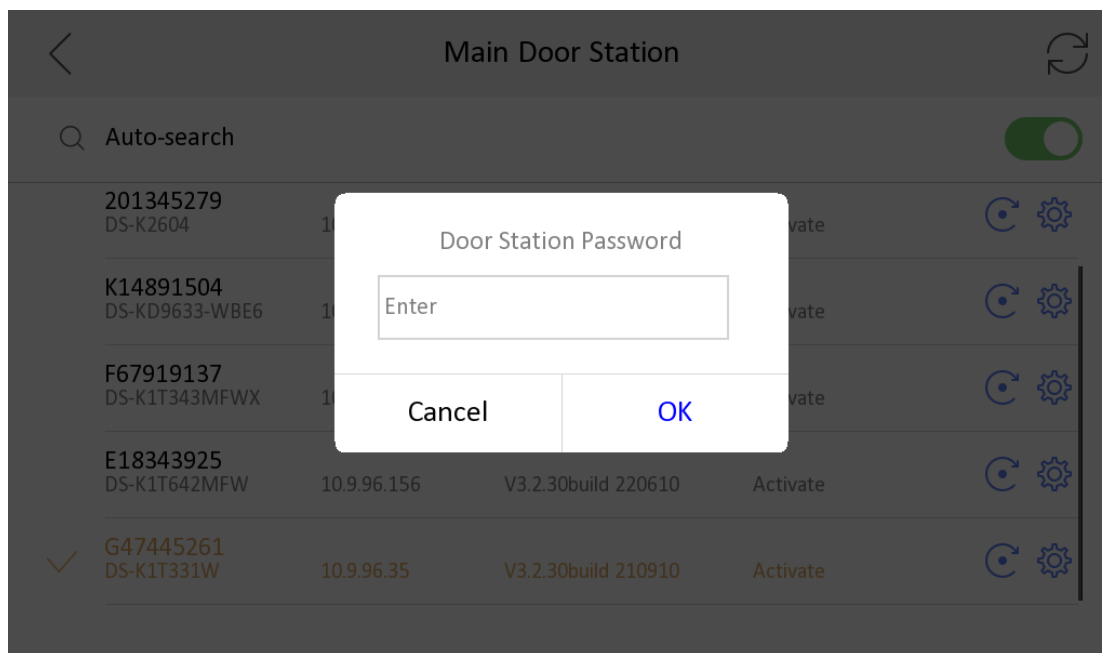
Main Door Station					
	Auto-search				
	F67919137 DS-K1T343MFWX	10.9.96.243	V3.3.4build 220310	Activate	
	E05283498 DS-K1T671TMFW	10.9.96.137	V3.2.30build 211201	Activate	
	G47445261 DS-K1T331W	10.9.96.35	V3.2.30build 210910	Activate	
	201345279 DS-K2604	10.9.96.238	V2.0.9build 211028	Activate	
	K14891504 DS-KD9633-WBE6	10.9.96.43	V2.3.4build 220629	Activate	

3. Adds a prompt when assigning network IP address automatically.

The screenshot shows the 'Network Settings' interface. A 'Note' dialog box is displayed over the 'Auto Get IP Address' toggle, which is currently turned off. The note reads: 'Enable to assign IP address automatically. Do not enable the function if DHCP is not supported by the connected PoE or router.' The dialog has 'Cancel' and 'OK' buttons.

Network Settings		
	Auto Get IP Address	
	Local IP Address	10.9.96.22
	Subnet Mask	255.255.255.0
	Gateway	10.9.96.254
	DNS Address	10.1.7.97
	DNS Address 2	10.1.7.98

4. In configure wizard to related door station, when the door station password is different from the indoor station, prompt information will pop.



2nd Gen Indoor Station Firmware V2.1.46_build220607 Release Note (2022-06-20)

Device Model	DS-KH8350-WTE1、DS-KH8350-TE1、DS-KH6320-WTE1、DS-KH6320-WTE2、DS-KH6320-WTE2(B)、DS-KH6320-TE1、DS-KH8520-WTE1
Firmware Version	V2.1.40_build220607
iVMS-4200 Version	Latest version
Hik-Connect APP	Latest version

Fix

1. Repair the defects left by system testing;

2. Fix the vulnerability defect of userid product;
3. Fix the defect that the abnormal processing of the database encryption and decryption interface will cause the interface to jam;
4. Repair the call defect of incompatible third-party door-to-door machine;

2nd Gen Indoor Station Firmware V2.1.40_build220428 Release Note

(2022-05-13)

Fix

Device Model	DS-KH8350-WTE1、DS-KH8350-TE1、DS-KH6320-WTE1、DS-KH6320-WTE2、DS-KH6320-WTE2(B)、DS-KH6320-TE1、DS-KH8520-WTE1
Firmware Version	V2.1.40_build220512
iVMS-4200 Version	Latest version
Hik-Connect APP	Latest version

1. Optimize registration password settings in Wizard.

Wizard-Indoor Station Settings 3/5

Device Type Indoor Station >

Floor No. 1

Room No. 1
The password might be required when linking indoor stations to door stations or main stations.

Registration Password Not configured. >
 Be consistent with the activation password.

Indoor Extension Settings

Previous
Next
Skip

Wizard-Indoor Station Settings 3/5

Device Type Indoor Station >

Floor No. 1

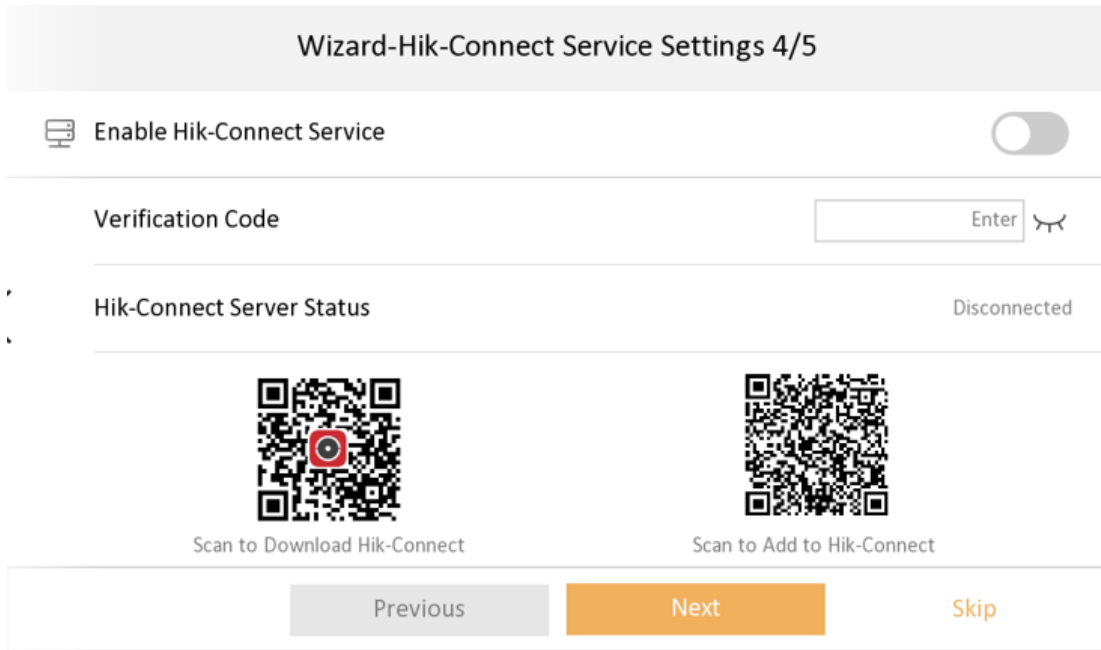
Room No. 1

Registration Password Not configured. >
 Be consistent with the activation password.
When enabled, the people who has the registration password will have the device admin permissions.

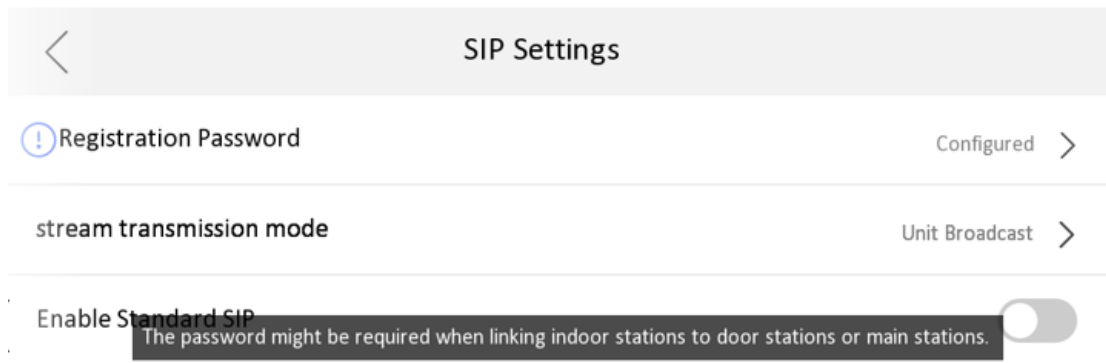
Indoor Extension Settings

Previous
Next
Skip

2. Optimize Hik-Connect password configuration page.



- 3. Support stream transmission mode settings, you can select Unit Broadcast or Group Broadcast.



- 4. Fixed some known bugs.

2nd Gen Indoor Station Firmware

V2.1.34_build211118 Release Note (2021-11-22)

Device Model	DS-KH8350-WTE1、DS-KH8350-TE1、DS-KH6320-WTE1、DS-KH6320-WTE2、DS-KH6320-WTE2(B)、DS-KH6320-TE1、DS-KH8520-WTE1
Firmware Version	V2.1.34_build211118
iVMS-4200 Version	Latest version
Hik-Connect APP	Latest version

Fix

5. Fixed some bugs.

2nd

Gen Indoor Station Firmware V2.1.32_build210926 Release Note (2021-09-30)

Device Model	DS-KH8350-WTE1、DS-KH8350-TE1、DS-KH6320-WTE1、DS-KH6320-WTE2、DS-KH6320-WTE2(B)、DS-KH6320-TE1、DS-KH8520-WTE1
Firmware Version	V2.1.32_build210926
iVMS-4200 Version	Latest version
Hik-Connect APP	Latest version

Fix

1. Solve production line related problems.


2nd Gen Indoor Station Firmware V2.1.26_210803 Release Note (2021-08-19)

Device Model	DS-KH8350-WTE1、DS-KH8350-TE1、DS-KH6320-WTE1、DS-KH6320-WTE2、DS-KH6320-WTE2(B)、DS-KH6320-TE1、DS-KH8520-WTE1
Firmware Version	V2.1.26_210803
iVMS-4200 Version	Latest version
Hik-Connect APP	4.13.1 or above

Modify

1. Verification code is empty by default.

Wizard-Hik-Connect Service Settings 4/5

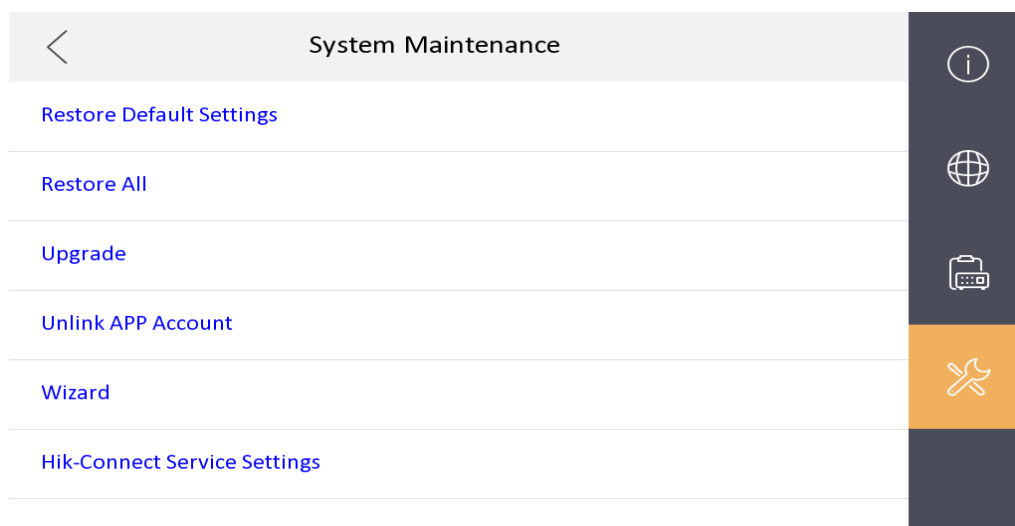
 Enable Hik-Connect Service

LBS Server
litedev.hik-connect.com

Verification Code

Previous
Next
Skip

- Hik-Connect Service Settings is changed to the place of Settings→ Advanced Settings→ Configuration→ System Maintenance.



- Fixed some bugs.

2nd Gen Indoor Station Firmware V2.1.24_210617 Release Note (2021-06-22)

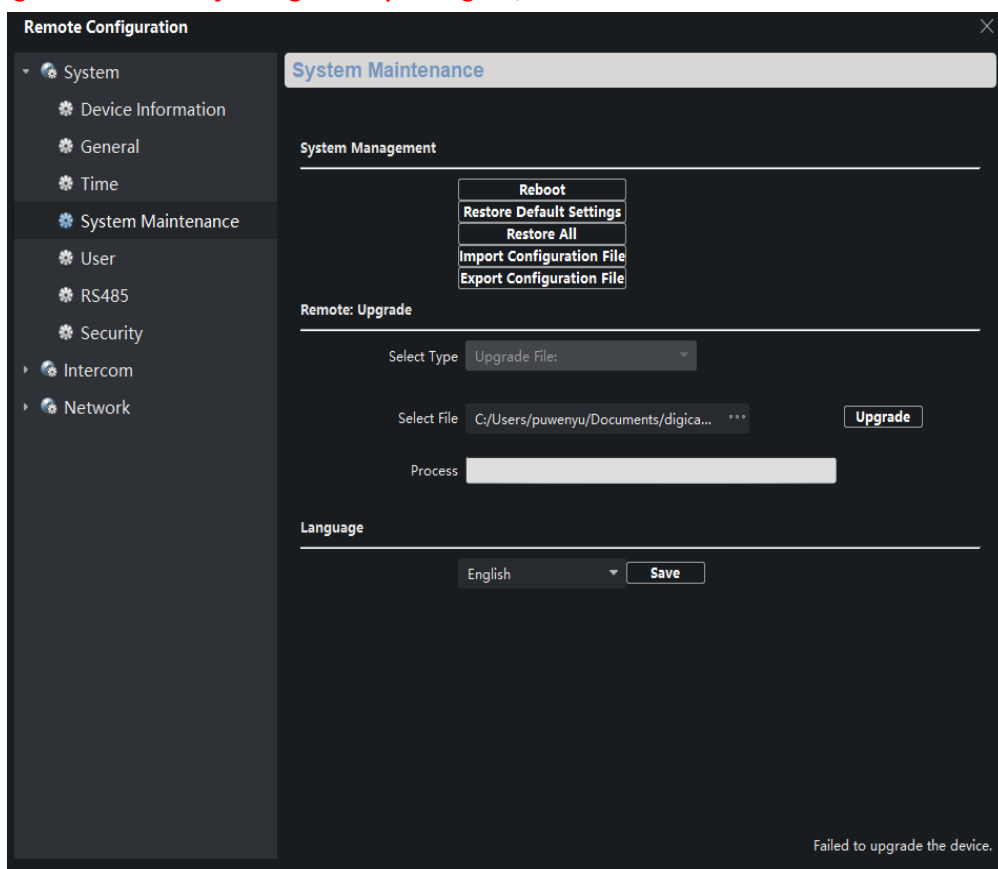
Device Model	DS-KH8350-WTE1、DS-KH8350-TE1、DS-KH6320-WTE1、DS-KH6320-WTE2、DS-KH6320-WTE2(B)、DS-KH6320-TE1、DS-KH8520-WTE1
Firmware Version	V2.1.24_210617
iVMS-4200 Version	Latest version
Hik-Connect APP	4.13.1 or above

Modify

- Since **V2.1.24 build 210617**, remote

degradation of devices is not supported in all subsequent versions. When degradation occurs, it will prompt Failed to upgrade the device and the device will restart.

Notice: Although the device can be degraded by serial port, the device will fail to start and cannot change the version by using serial port again, which means that the device will be completely unusable.



- 2、Fixed some bugs
- 3、The firmware is compatible with materials which are switched due to supply shortage.

2nd Gen Indoor Station Firmware

V2.1.20_210420 Release Note

(2021-04-30)

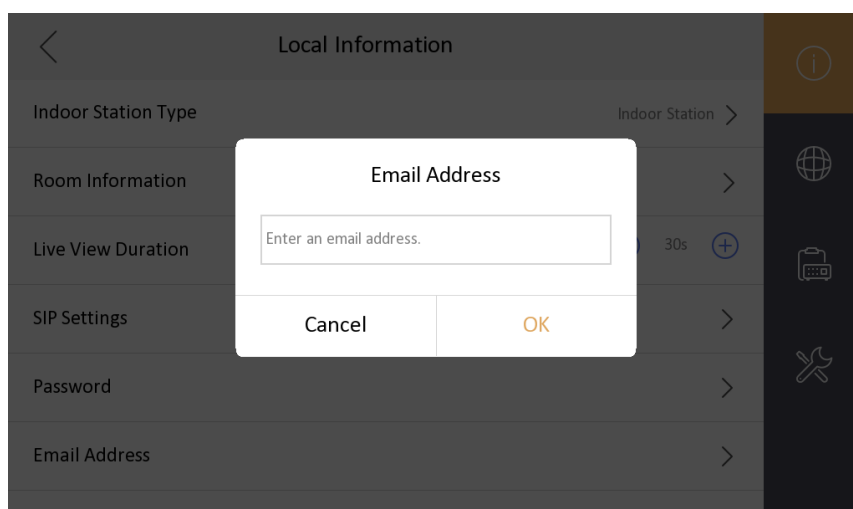
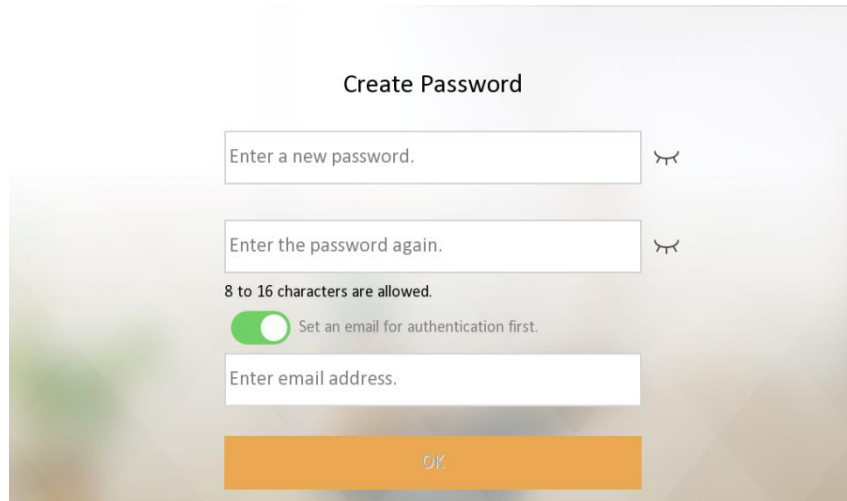
Device Model	DS-KH8350-WTE1、DS-KH8350-TE1、DS-KH6320-WTE1、DS-KH6320-WTE2、DS-KH6320-WTE2(B)、DS-KH6320-TE1、DS-KH8520-WTE1
Firmware Version	V2.1.24_210617
iVMS-4200 Version	Latest version
Hik-Connect APP	4.13.1 or above

NOTE

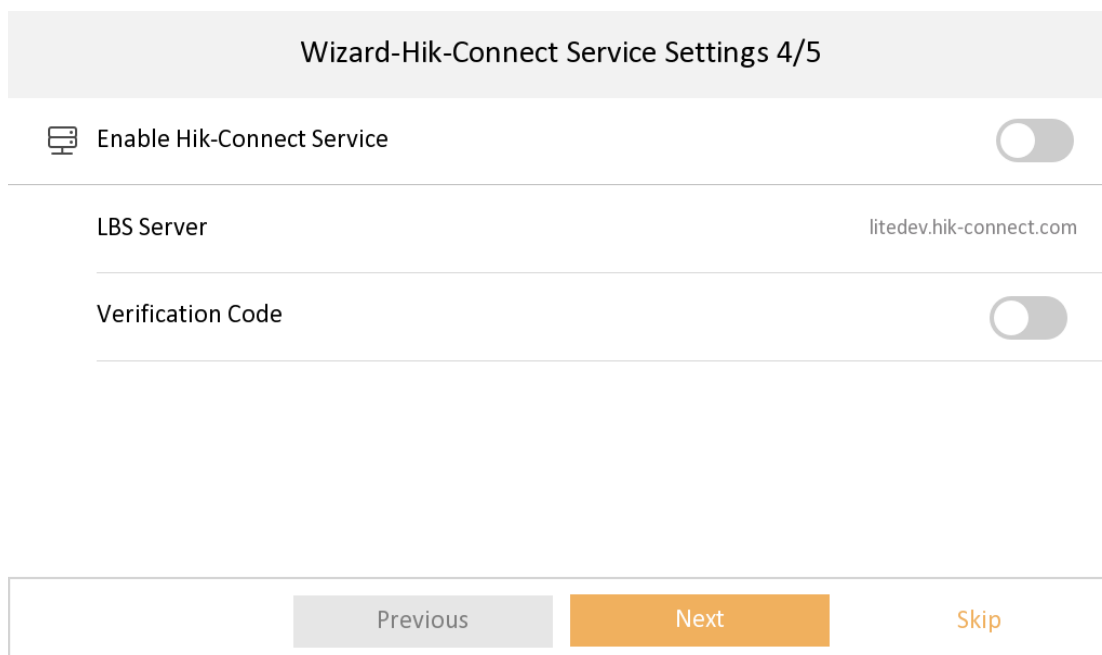
Registration password will correspond to the serial number to prevent other devices from invading the system

New Function

- 1. Local interface support to modify the password through email authentication




2. Support Hik-Connect configuration, closed by default



3. Newly added multi-language Croatian, Dutch, Romanian, Czech, Bulgarian, Croatian, Serbian

4. Add IPC interface, when Open Network Video Intercom protocol is selected, add plaintext ciphertext switch menu item configuration


 **Add Device**

Protocol Settings Open Network Video Interface >

Device Name Enter the device name.

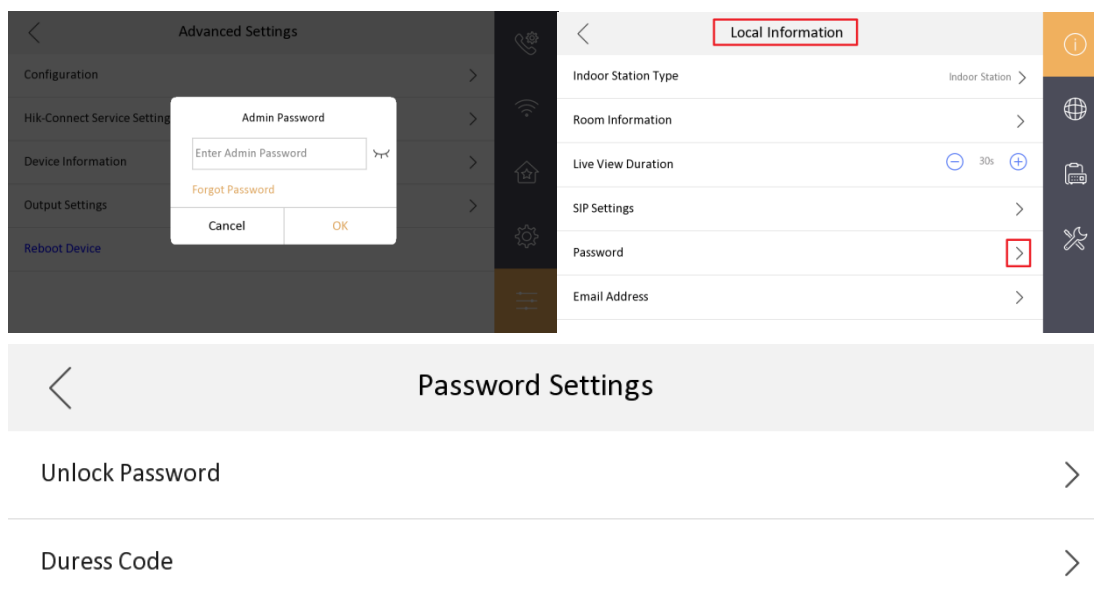
IP Address Enter the IP address.

User Name Enter the user name.

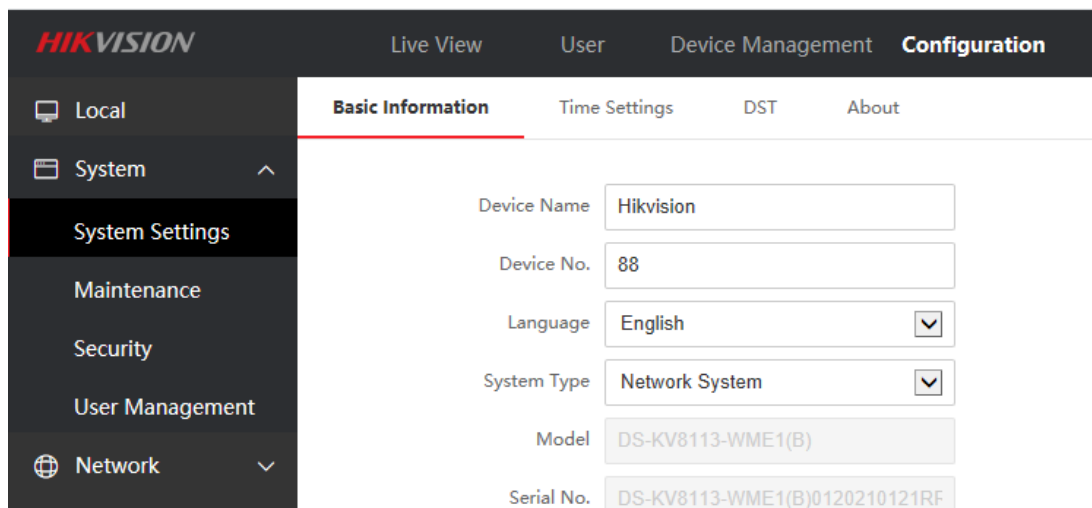
Password Enter the password. 

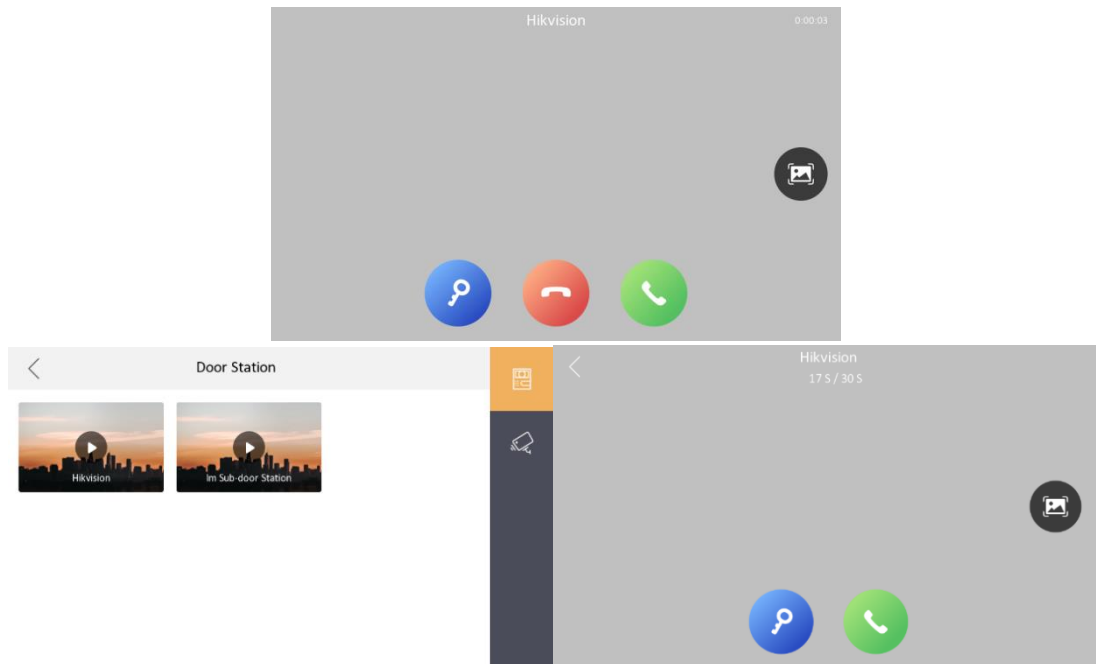
Modify

1. Change the position of unlock password and duress code, to enter the password page requires an admin (activation) password.

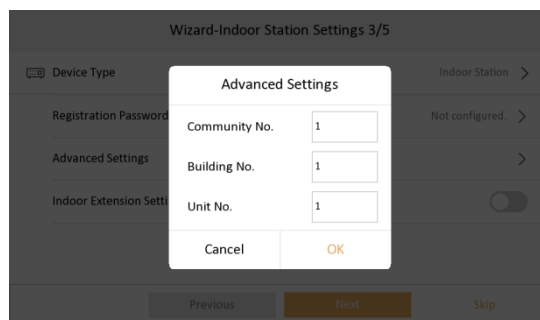


2. When changing the unlock password and duress code, the old password is not required as a credential.
3. The name of the local private SIP password configuration Sip Password is uniformly changed to Registration Password
4. The changed name of the door station(KD8003 modular door station, KV(-B), KB8113) will be displayed on the call interface or live view interface of the indoor station

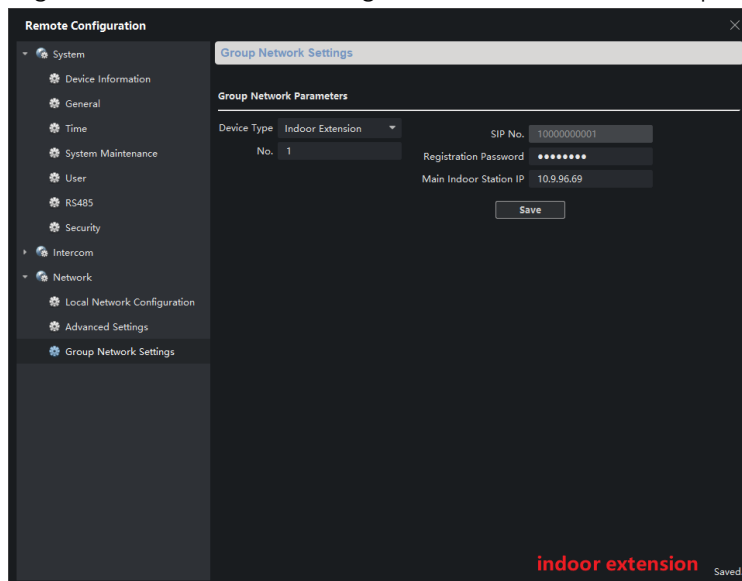




5. The local interface community number, building number, and unit number of the indoor station will be stored in the advance column instead of being displayed directly



6. The method of adding indoor extensions is changed to the same method as protocol 1.0



2nd Gen Indoor Station

V2.1.10_build201208 Release Note

(2020-12-28)

Device Model	DS-KH8350-WTE1、DS-KH8350-TE1、DS-KH6320-WTE1、DS-KH6320-WTE2、DS-KH6320-WTE2(B)、DS-KH6320-TE1、DS-KH8520-WTE1
Firmware Version	Indoor Station: v2.1.10_build201208

Fix

(1) Solve

the

problem that the door station calls the indoor station, the indoor station refuses to answer, and the HC does not hang up

(2) Solve the problem that the local SADP of the indoor station cannot search for the MinMoe device when docking with the latest version of Minmoe

(3) Solve the problem that when the indoor station is added to the MinMoe device, MinMoe device will restart

(4) Solve the problem that when the activation password of the indoor station contains a capital M, the door station can only call through the main indoor station, but not to the indoor extension

2nd Gen Indoor Station

V2.1.10_build201207 Release Note

(2020-12-27)

Device Model	DS-KH8350-WTE1、DS-KH8350-TE1、DS-KH6320-WTE1、DS-KH6320-WTE2、DS-KH6320-WTE2(B)、DS-KH6320-TE1、DS-KH8520-WTE1
Firmware Version	Indoor Station: v2.1.10_build201207

Fix some**bugs**

2nd Gen Indoor Station

V2.1.10_build200713 Release Note

(2020-07-27)

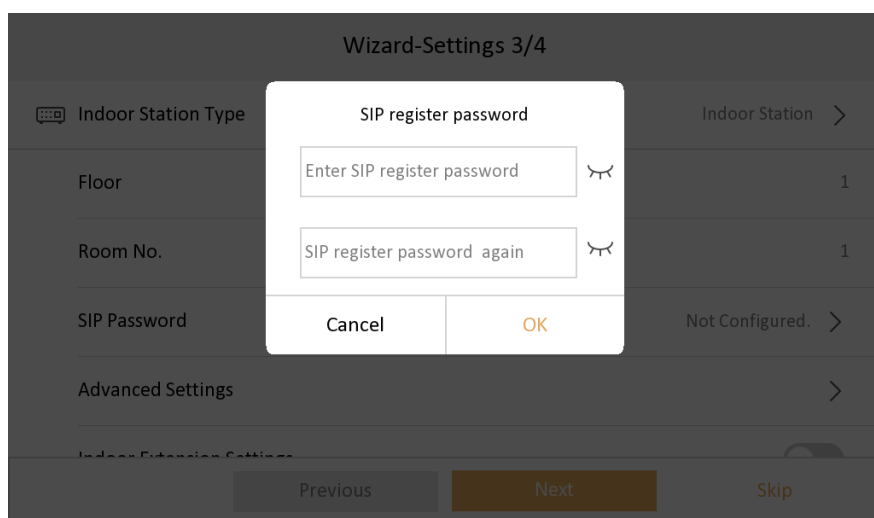
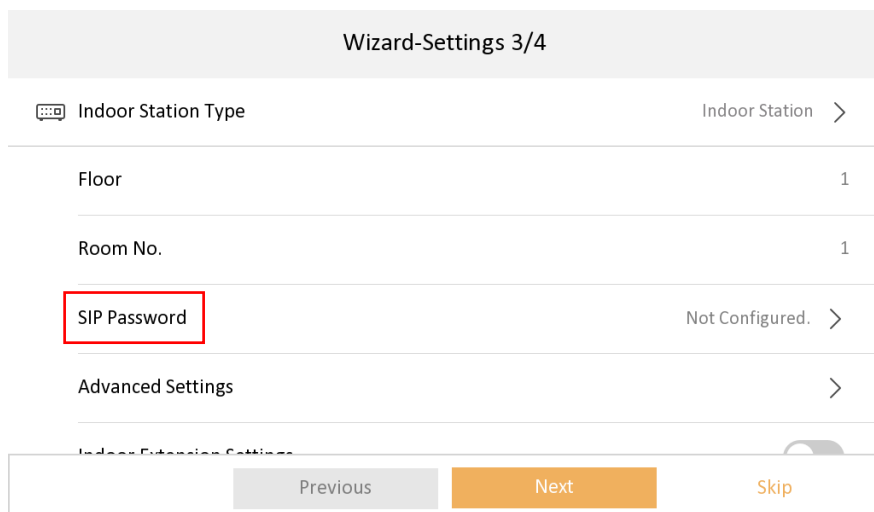
Device Model	DS-KH8350-WTE1、DS-KH8350-TE1、DS-KH6320-WTE1、DS-KH6320-WTE2、DS-KH6320-WTE2(B)、DS-KH6320-TE1、DS-KH8520-WTE1
Firmware Version	Indoor Station: v2.1.10_build200713
iVMS-4200 Version	V3.3.1.4 build 20200806
Hik-Connect APP	4.6.2.0724

New
Function

1. Higher security, SIP Passwords

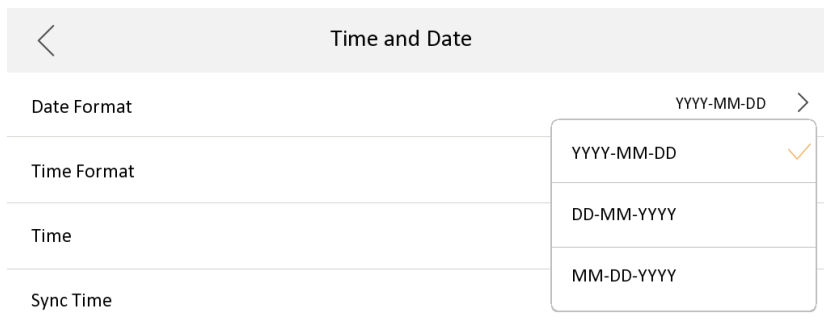
(Register Passwords)

SIP password is actually Register Password, which is suitable for our security 2.0 protocol. They can communicate normally only when the **SIP passwords (Register passwords)** of the door station, indoor station and indoor extension are the **same**.



2. Support three date formats, two clock format configuration (Time format only allows local modification)

1) Support three formats in Settings->General Settings->Time and Date interface, set year-month-day, day-month-year, month- day - year

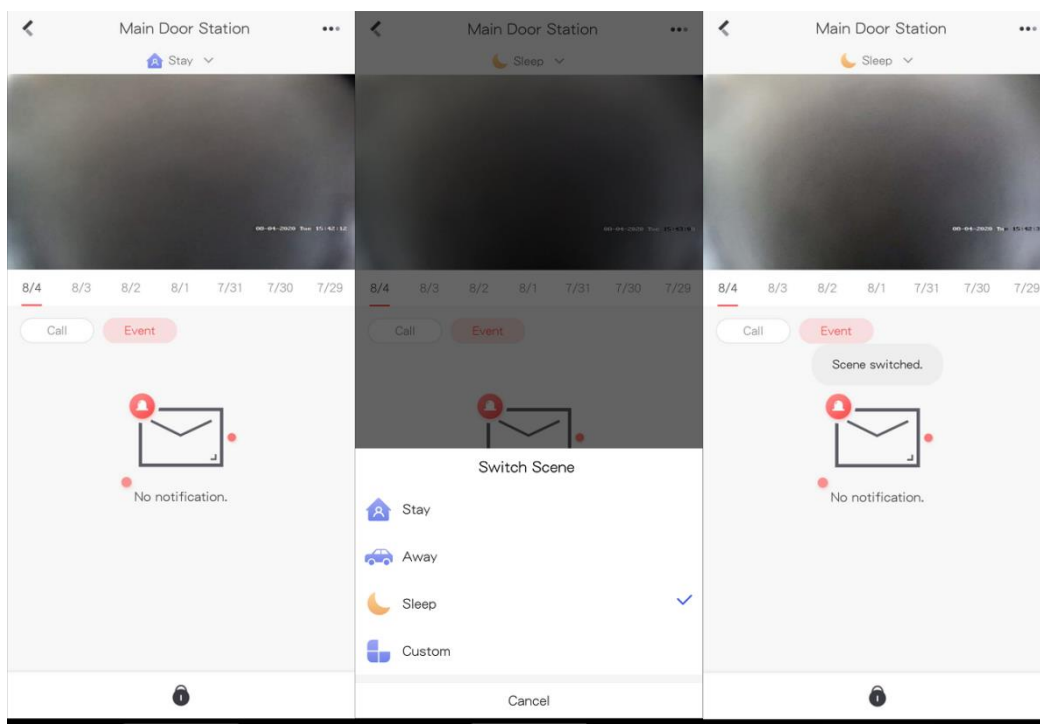


2) Support the Settings->General Settings->Time and Date interface, set the 12-hour system, 24-hour system two formats, and the default setting is 24-hour system display.



3. Multi-language added to 12 countries: English, French, Portuguese (Brazil), Spanish, Russian, German, Italian, Polish, Arabic, Turkish, Vietnamese, Ukrainian.

4. The indoor station supports remote scene switching through Hik-Connect, including four modes: Stay, Away, Sleeping and Custom.

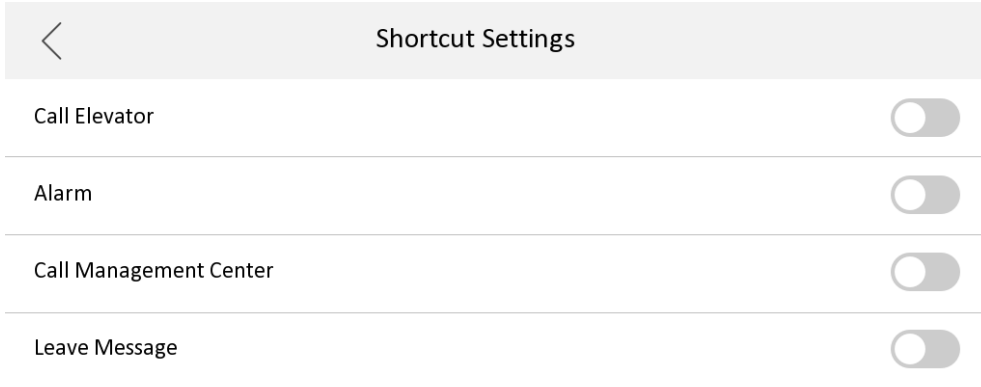


When the indoor station is not currently configured with the arm/disarm password, the Hik-Connect switching scene will fail, and indoor station will send an error code to Hik-Connect App

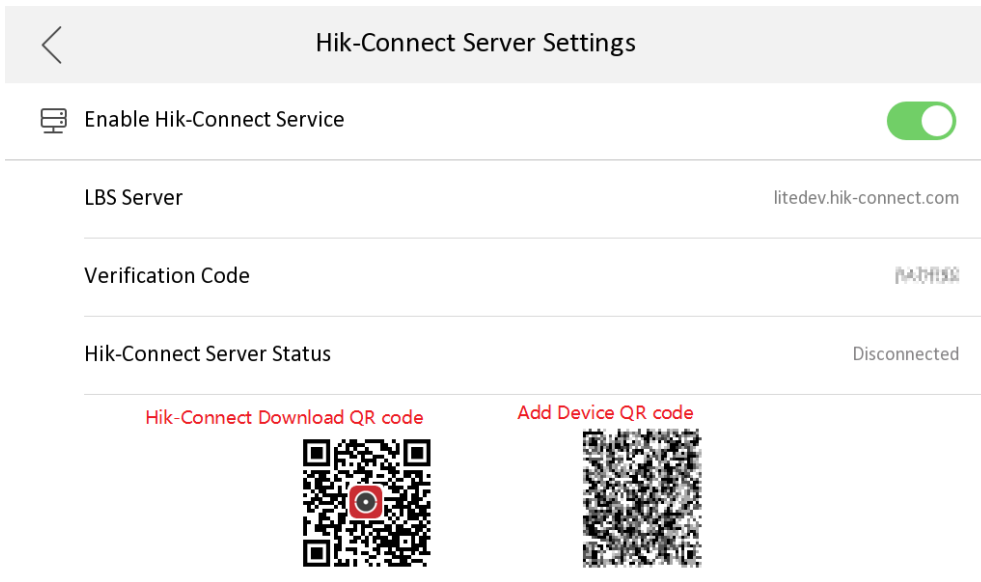
5. Support whether to enable the call management center function, it is disabled by default

6. Support whether to enable the leave message function, it is disabled by default

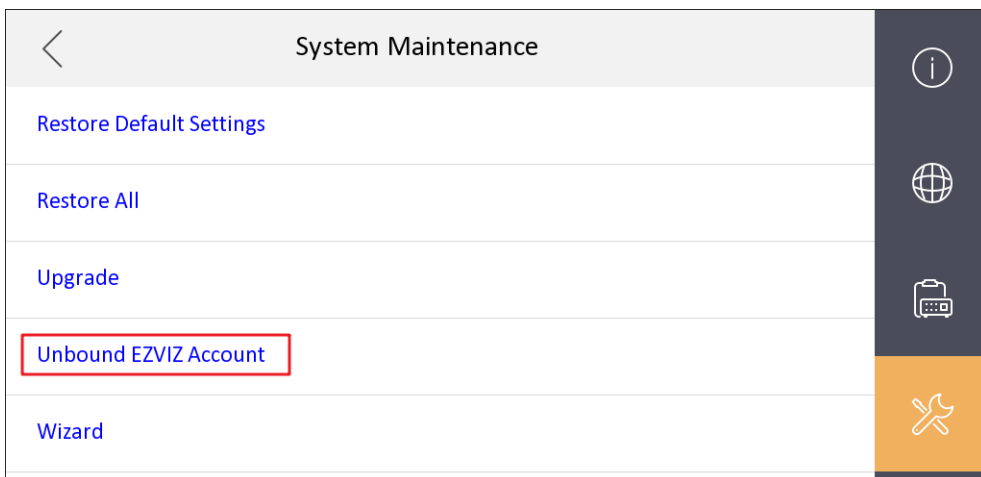
1) In the Settings->More->Preference->Shortcut Settings interface



7. Add the QR code of Hik-Connect App download address to the indoor station Hik-Connect configuration interface



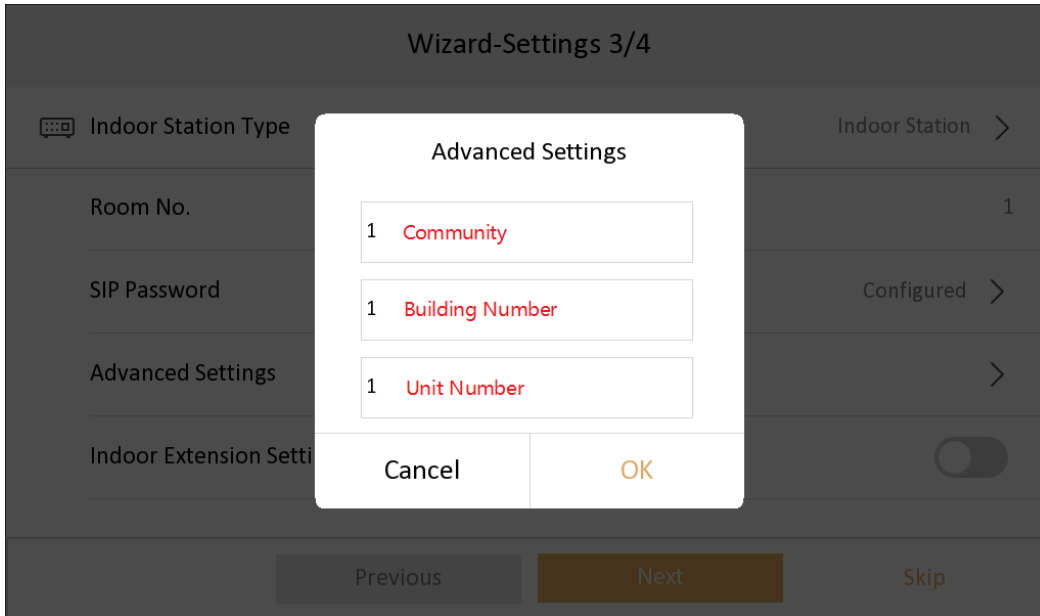
Indoor Station local UI, SADP tool, Hik-connect support fluorite account unbinding



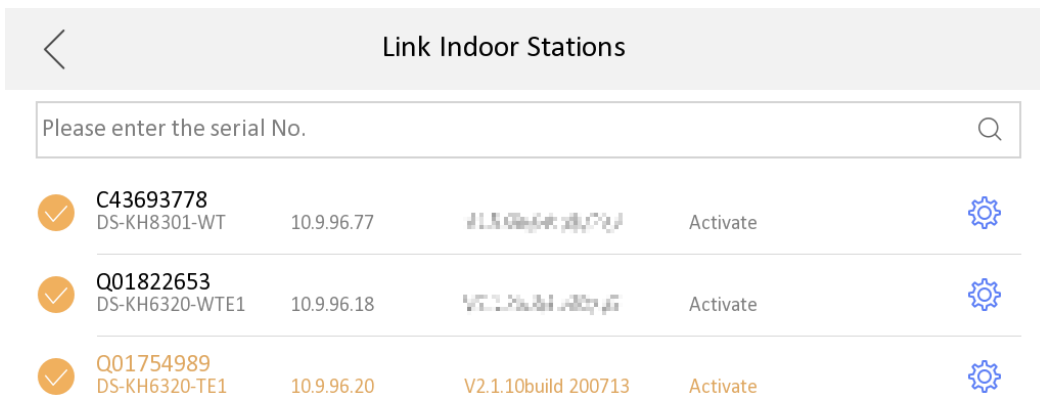
Hikvision Video Intercom v2.0 Protocol

The communication protocol between Hikvision devices uses a secure private call protocol, and the communication with 3rd party devices uses standard SIP;

- 1) Support setting period number, building number, and room number on the indoor station;



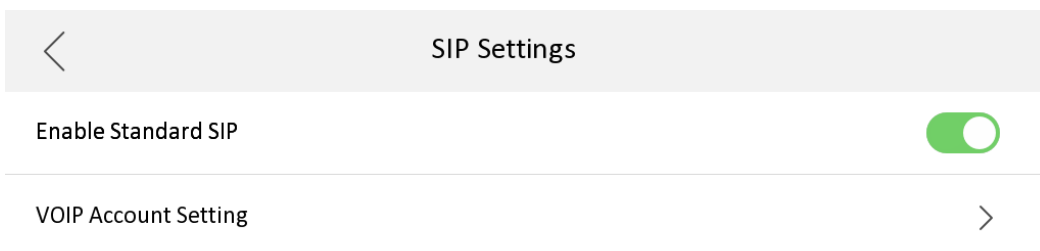
- 2) Support remote configuration of indoor extension information through the main indoor station;



- 3) Standard SIP and private SIP integration:

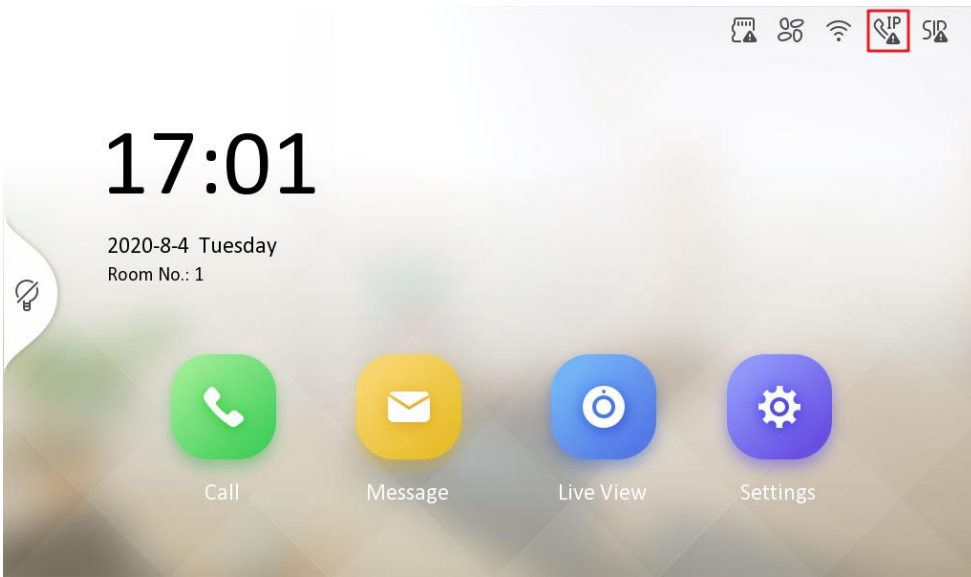
- a) The indoor station does not need to switch to SIP mode;

- b) The standard SIP of the indoor station is disabled by default, if you want to connect to a third-party standard SIP device, you need to turn on this function.

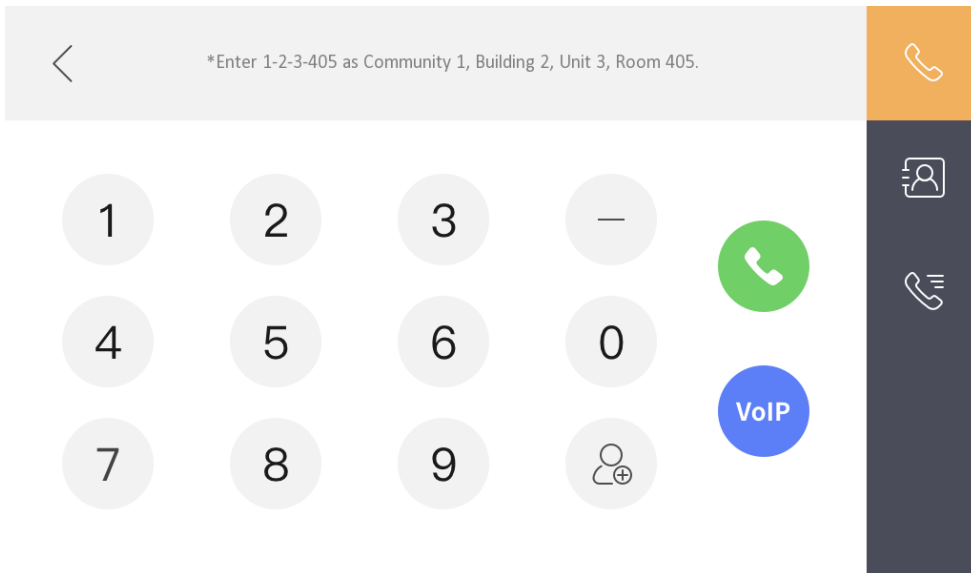


- c) A standard SIP registration status icon is added to the main interface, which can be displayed/hidden

according to whether standard SIP is enabled;



d) Added a VoIP call button in the call interface to distinguish standard SIP calls



4) Supports two audio formats, G.711U and G.711A. (And G.711U priority is greater than G.711A)

NOTE:

1. At present, the indoor station can support customization requirements of more than 5 extensions;
2. The description of ONVIF in the local UI of the indoor station is uniformly changed to open network video interface.
3. The main indoor station and indoor extension must use the same firmware version. And starting from this firmware version, the 1st generation video intercom indoor station will not be compatible as a main indoor station or indoor extension to connect this 2nd generation firmware version system.

Customer Impact and Recommended Action

This update refers to function/compatibility improvement and will take effect automatically after the Date of Change. We are very sorry for any inconvenience of use-habit changes caused by this action.

For any questions and request for this firmware, please contact our local technical support team.

Note:

- Hikvision reserves the right to change, alter or withdraw the above notification without prior notice.
- Product design and specifications are subject to change without prior notice.
- The Hikvision firmware may contain errors known as errata, which may cause the product to deviate from published specifications. Current characterized errata are available on request.
- Hikvision is not liable for any typing or printing errors.

Hikvision Digital Technology CO., Ltd.
No. 555 Qianmo Road, Binjiang District, Hangzhou 310051,
China
Tel: +86-571-8807-5998
FAX: +86-571-8993-5635
Email: overseabusiness@hikvision.com