

KD8 (-B) Modular Door Station V2.2.58_build220725

Release Note (2022-08-02)

1. Firmware Basic Information

Firmware Basic Information	Firmware Version	V2.2.58_220725
	Device Type	(2022-08-02): DS-KD8003-IME1(B) DS-KD8003-IME1(B)/Surface DS-KD8003-IME1(B)/Flush (2022-08-23): DS-KD8003-IME1(B)/S DS-KD8003-IME1(B)N/S
	Device Type (Kits)	(2022-08-02): DS-KIS602(B)

Notes:

KD8003 (-B) series is a newly released hardware version, and the firmware which is inherited all the functions of the previous version of DS-KD8003 series.

1.1 Recommended Firmware

It is recommended to use the following devices and version together, because they can cooperate and work normally after the docking test.

Test resource	Device type	Version
New version	KD8003-IME1 (B)	V2.2.58_220725
Indoor Station	KH6320	SIP1.0: V2.1.2_build200701 SIP2.0: V2.1.46_build220607 or later
	KH9510(B)	V2.1.30_build220402 or later
	KH6320(B)	V2.1.44_build220516 or later
Door Station	KD8003-IME1	SIP1.0: V2.0.8_200701 SIP2.0: V2.2.56_220607 or later
	KV6113(C)	V2.2.55_220426 or later
	KV6113(B)	SIP1.0: V2.0.8_200701 SIP2.0: V2.2.56_220607 or later
Main Station	KM9503	V1.0.34_build220212 or later

Notes:

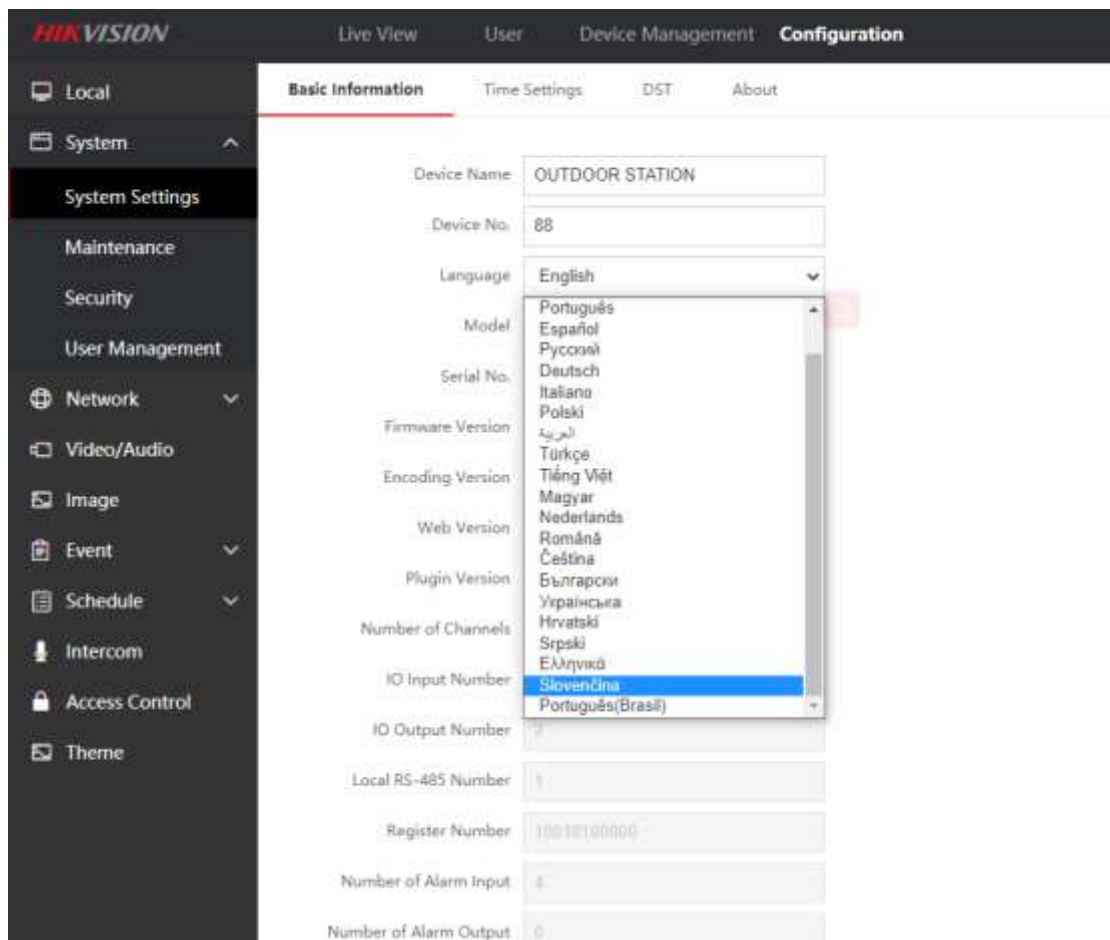
Test records only contain the cases for normal devices and do not represent all the scenarios and all the functions.

2. New

2.1 Support the Web Client, manage device from your browser:



2.2 Support Portuguese(Brasil) and Slovak, and support language switching without restart.



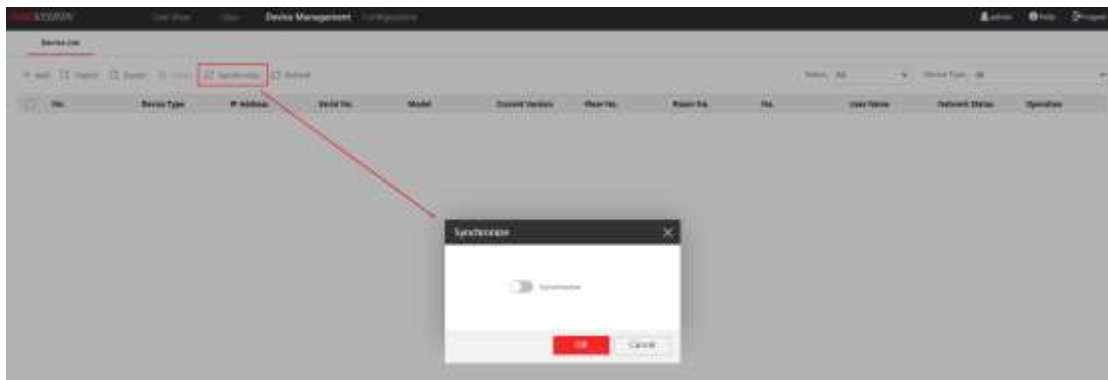
2.3 Support C-S Register Mode

You only need to set Main Door Station IP address to Sub Door Station, or you only need to add Sub Door Station to Main Door Station.

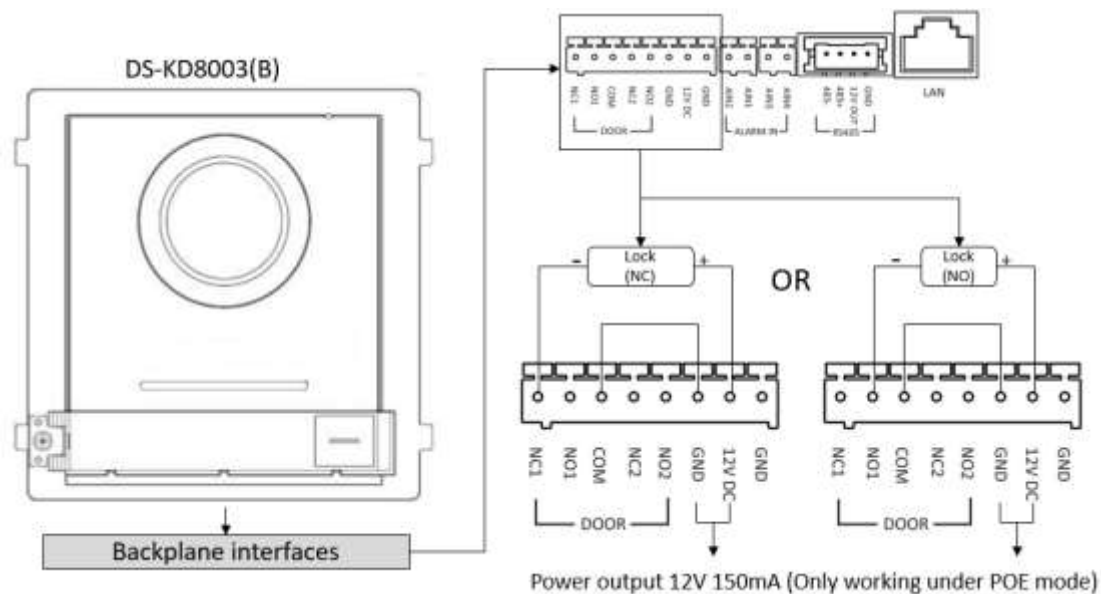
2.4 The public password supports opening specified lock(lock 1 or 2)



2.5 The Synchronization switch in Device Management interface is Off by default.



2.6 Support DC 12V 150mA maximum power output (only working with POE mode).



Remarks:

- Hikvision reserves the right to change, alter or withdraw the above notification without prior notice.
- Product design and specifications are subject to change without prior notice.
- The Hikvision firmware may contain errors known as errata which may cause the product to deviate from published specifications. Current characterized errata are available on request.
- Hikvision is not liable for any typing or printing errors.

Hikvision Digital Technology CO., Ltd.
No. 555 Qianmo Road, Binjiang District, Hangzhou 310051,
China
Tel: +86-571-8807-5998
FAX: +86-571-8993-5635
Email: overseabusiness@hikvision.com