

DS-K1T673 Series MinMoe Terminal

Release Notes (2023-02-16)

<p>Device Model: DS-K1T673TDGX,DS-K1T673TDWX, DS-K1T673TDX, DS-K1T673TDX-T</p> <p>Modules (optional): DS-KAB673-B, DS-KAB673-BQR DS-KAB673-FB, DS-KAB673-FBQR</p>	<p>Firmware Version</p>	<p>ARM: ACS_673_F1plus_EN_STD_V3.10.0_build230202 ACS_673_F1plus_EN_NEU_V3.10.0_build230202</p>
<p>Naming Rule: D for Desfire, Felica and M1 card W for Wi-Fi, F for fingerprint G for SIM card, B for Bluetooth, QR for QR code</p>	<p>Software Version</p>	<p>HikCentral AC: https://www.hikvision.com/en/support/download/software/hikcentral-access-control-v2-0-1/ iVMS: https://www.hikvision.com/en/support/download/software/ivms4200-series/</p>

Reason of Upgrade

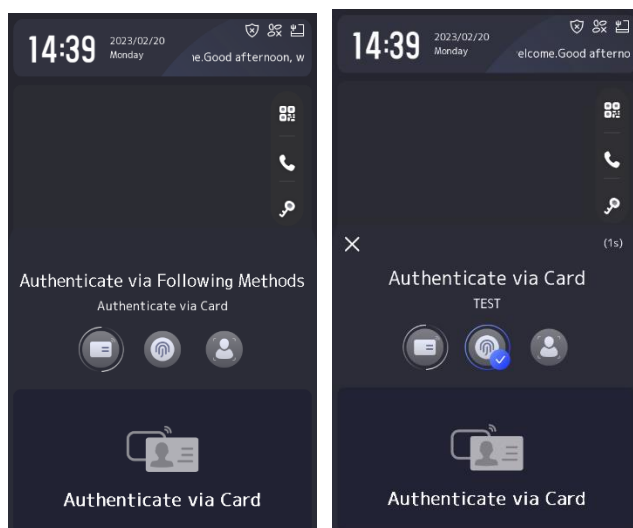
Fix bugs, enhance products quality and meet customers' requirements.

Notice

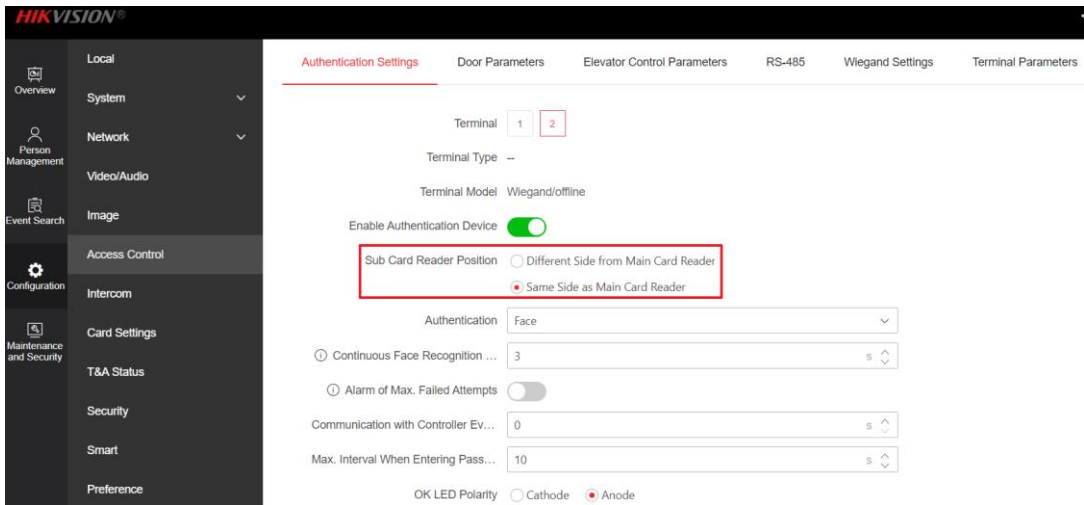
1. Version downgrade. After upgrade to this version, it cannot downgrade. If need to downgrade, please contact technical support.
2. After upgrade to this version, if device does not store face picture, you needs to apply face picture again.

New Features

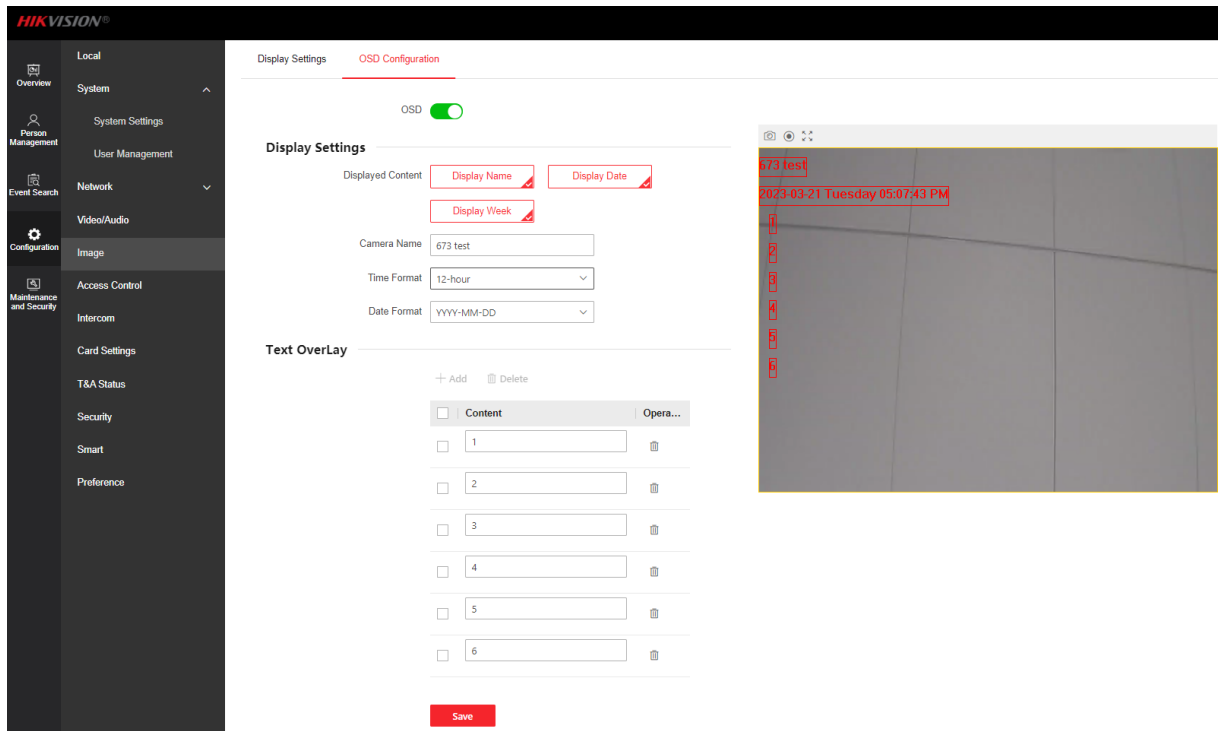
- 1 Support control initial authentication type function. All selected type of authentication mode can be used for first-time authentication in combined authentication mode.



- 2 Support change sub card reader position. Sub card reader can be used in combined authentication mode if set as the same side as main card reader



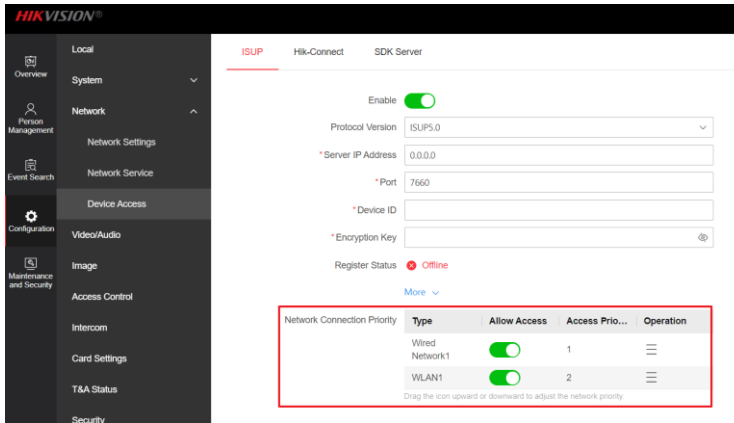
- 3 Video
 - a. Support H.265 encoding mode
 - b. Support OSD function. Max.8 texts overlay can be displayed: time, camera name and Max.6 more customized texts.



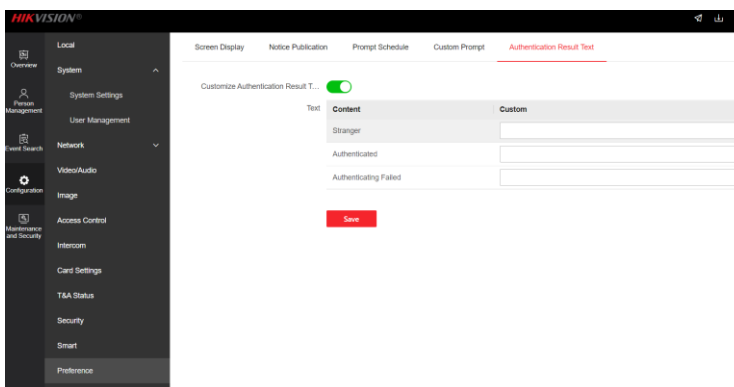
- c. Support video in advertisement mode. Up to 3 videos are supported, single size should be less than 600MB, video format should be MP4.(MP4 Format Conversion Tool provided on web page)
 - d. Video or picture be displayed with full screen on device
 - e. Support Hik-Connect stream encryption with AES128
- 4 Audio
 - a. Support multi-source audio play. For example, it can play audio of advertisement and

authentication prompt at the same time. Other scenario includes advertisement & intercom.

- b. Support intercom function when connected with ISAPI, ISUP protocol
- 5 Support network connection priority setting(Wired network, WLAN) when connecting with ISUP and Hik-Connect



- 6 Support capture network packet function
- 7 Support customize authentication result text.



- 8 Support QR code scanner Q340, which is usually used in turnstile QR code module



Modified Features

- 1. Face recognition algorithm upgrade, it requires device saves registered picture before upgrading to this version.

If save registered picture function was disabled or clear registered face picture function was used before upgrade, you need to apply face picture to device with platform

(HCAC/HCP/iVMS4200) or register face picture again

Privacy Settings

Authentication Result Settings

Display Authentication Result Face Picture Name Employee ID

Name De-identification

ID De-identification

Authentication Result Display Dur... 5 s

Picture Uploading and Storage

Save Picture When Auth.

If enabled, the captured picture when authentication will be saved to the device automatically.

Upload Picture When Auth.

If enabled, the captured picture when authentication will be uploaded to the platform automatically.

Save Registered Picture

If enabled, the captured face picture when registered will be saved to the device.

Save Pictures After Linked Capture

If enabled, the captured pictures will be saved to the device automatically.

Upload Picture After Linked Capture

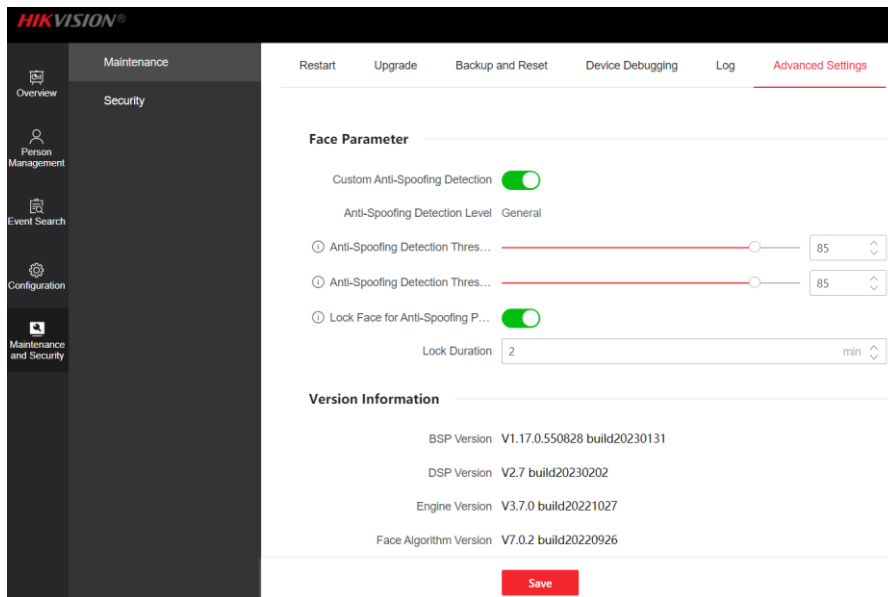
If enabled, the captured pictures will be uploaded to the platform automatically.

Clear All Pictures in Device

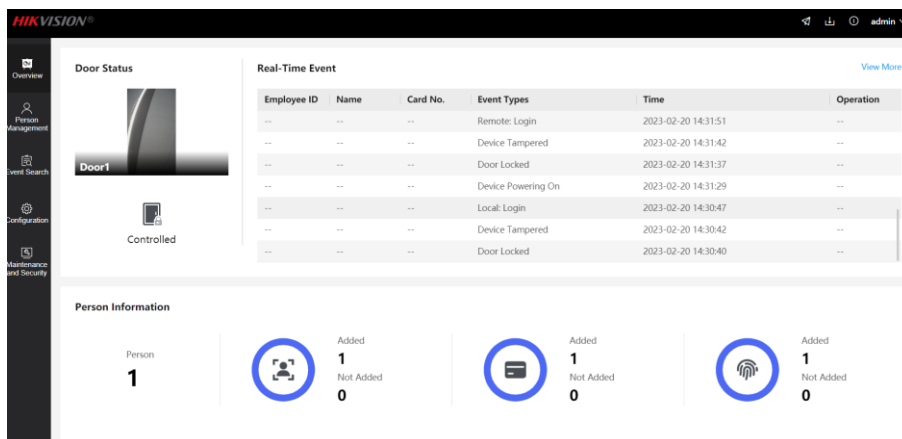
Clear Registered Face Pictures

Clear Captured Pictures

2. Upgrade face anti-spoofing detection algorithm, 4 level supported: disabled, **General**, **Advanced**, **Professional**. It supports customizing anti-spoofing detection threshold in advanced settings for advanced and professional level



3. Newly designed web interface UI



4. Optimize booting time, it takes less time to reboot.

DS-K1T673 Series MinMoe Terminal Release Notes (2022-09-30)

<p>Device Model: DS-K1T673DX, DS-K1T673DWX, DS-K1T673TDX, DS-K1T673TDWX</p> <p>Modules (optional): DS-KAB673-B, DS-KAB673-BQR DS-KAB673-FB, DS-KAB673-FBQR</p> <p>Naming Rule: D for Desfire, Felica and M1 card W for Wi-Fi, F for Fingerprint, B for Bluetooth, QR for QR code</p>	<p>Firmware Version</p>	<p>ARM: ACS_673_F1plus_EN_STD_V3.3.1_build220906 ACS_673_F1plus_EN_NEU_V3.3.1_build220906</p> <p>Sub module: ACS_DS-KAB673_ST1_GML_GM_V1.0.2_build20220505</p>
	<p>Software Version</p>	<p>HikCentral AC: https://www.hikvision.com/en/support/download/software/hikcentral-access-control-v1-3-0/</p> <p>iVMS: https://www.hikvision.com/en/support/download/software/ivms4200-series/</p>

Reason of Upgrade

Fix bugs, enhance products quality and meet customers' requirements.

Modified Features

5. Compatible with new chip.

DS-K1T673 Series MinMoe Terminal Release Notes (2022-06-10)

Device Model: DS-K1T673DX, DS-K1T673DWX, DS-K1T673TDX, DS-K1T673TDWX Modules (optional): DS-KAB673-B, DS-KAB673-BQR DS-KAB673-FB, DS-KAB673-FBQR Naming Rule: D for Desfire, Felica and M1 card W for Wi-Fi, F for Fingerprint, B for Bluetooth, QR for QR code	Firmware Version	ARM: ACS_673_F1plus_EN_STD_V3.3.1_build220610 ACS_673_F1plus_EN_NEU_V3.3.1_build220610 Sub module: ACS_DS- KAB673_ST1_GML_GM_V1.0.2_build20220505
	SDK	Latest baseline version
	iVMS-4200 Version	Latest baseline version

Reason of Upgrade

Fix bugs, enhance products quality and meet customers' requirements.

Modified Features

- Compatible with new 4G module.(the sim card function is reserved)

DS-K1T673 Series MinMoe Terminal Release Notes (2022-02-14)

Device Model: DS-K1T673DX, DS-K1T673DWX, DS-K1T673TDX, DS-K1T673TDWX Modules (optional): DS-KAB673-B, DS-KAB673-BQR	Firmware Version	ARM: ACS_673_F1plus_EN_STD_V3.3.1_build220120 ACS_673_F1plus_EN_NEU_V3.3.1_build220120 Sub module: ACS_DS- KAB673_ST1_GML_GM_V1.0.1_build20211115

DS-KAB673-FB, DS-KAB673-FBQR	SDK	Latest baseline version
Naming Rule: D for Desfire, Felica and M1 card W for Wi-Fi, F for Fingerprint, B for Bluetooth, QR for QR code	iVMS-4200 Version	Latest baseline version

Reason of Upgrade

Fix bugs, enhance products quality and meet customers' requirements.

Modified Features

7. Optimize Wi-Fi function;
8. Fixed the problem of abnormal URL ID parsing when applying a large number of people to the device
9. Optimized the firmware upgrade mechanism

DS-K1T673 Series MinMoe Terminal Release Notes (2021-12-03)

Device Model: DS-K1T673DX, DS-K1T673DWX, DS-K1T673TDX, DS-K1T673TDWX Modules (optional): DS-KAB673-B, DS-KAB673-BQR DS-KAB673-FB, DS-KAB673-FBQR	Firmware Version	ARM: ACS_673_F1plus_EN_STD_V3.3.1_build211123 ACS_673_F1plus_EN_NEU_V3.3.1_build211123 Sub module: ACS_DS-KAB673_ST1_GML_GM_V1.0.1_build20211115
Naming Rule: D for Desfire, Felica and M1 card W for Wi-Fi, F for Fingerprint, B for Bluetooth, QR for QR code	SDK	Latest baseline version
	iVMS-4200 Version	Latest baseline version

Reason of Upgrade

Fix bugs, enhance products quality and meet customers' requirements.

Modified Features

1. Fixed some ISAPI protocol issue

DS-K1T673 Series MinMoe Terminal

Release Notes (2021-11-15)

Device Model: DS-K1T673DX, DS-K1T673DWX, DS-K1T673TDX, DS-K1T673TDWX Modules (optional): DS-KAB673-B, DS-KAB673-BQR DS-KAB673-FB, DS-KAB673-FBQR Naming Rule: D for Desfire, Felica and M1 card W for Wi-Fi, F for Fingerprint, B for Bluetooth, QR for QR code	Firmware Version	ARM: ACS_673_F1plus_EN_STD_V3.3.1_build211101 ACS_673_F1plus_EN_NEU_V3.3.1_build211101 Sub module: ACS_DS- KAB673_ST1_GML_GM_V1.0.0_build20210812
	SDK	Latest baseline version
	iVMS-4200 Version	Latest baseline version

Reason of Upgrade

Fix bugs, enhance products quality and meet customers' requirements.

Modified Features

10. Fix the defect that the face/card/password cannot be configured when the USB module is not plugged in
11. Increase the volume of device voice prompts
12. Optimize the face recognition effect.
13. Optimize protocol defects with platform

DS-K1T673 Series MinMoe Terminal

Release Notes (2021-09-27)

Device Model: DS-K1T673DX, DS-K1T673DWX, DS-K1T673TDX, DS-K1T673TDWX Modules (optional): DS-KAB673-B, DS-KAB673-BQR	Firmware Version	ARM: ACS_673_F1plus_EN_STD_V3.3.1_build210825 ACS_673_F1plus_EN_NEU_V3.3.1_build210825 Sub module: ACS_DS- KAB673_ST1_GML_GM_V1.0.0_build20210812

DS-KAB673-FB, DS-KAB673-FBQR	SDK	Latest baseline version
Naming Rule: D for Desfire, Felica and M1 card W for Wi-Fi, F for Fingerprint, B for Bluetooth, QR for QR code	iVMS-4200 Version	Latest baseline version

Reason of Upgrade

New model DS-K1T673 series MinMoe terminal and USB modules are released for the first time.



New Features

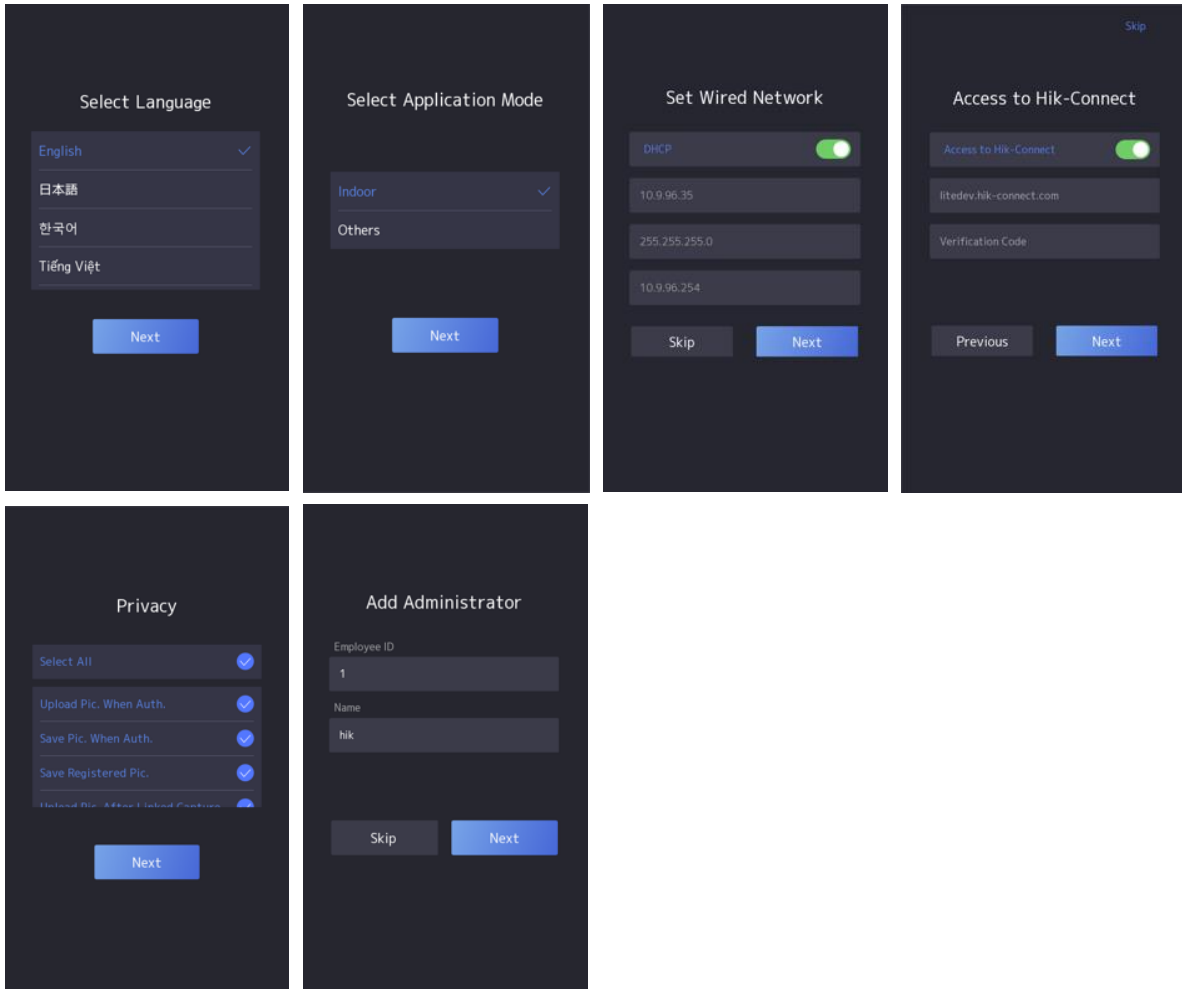
1. 7-inch LCD touch screen, 2 MP wide-angle dual-lens camera with WDR feature;
2. Connect external card reader or access controller via RS485 protocol; support Wiegand26/34 output
3. Face recognition duration < 0.2 s/User; face recognition accuracy rate ≥ 99%

4. Face, card, fingerprint, event capacity

	Face	Card	Fingerprint	Event	Wi-Fi
DS-K1T673DX	10,000	50,000	10,000 (optional)	150,000	\
DS-K1T673DWX			With module DS-KAB673-FB		Support
DS-K1T673TDX	100,000	500,000	or DS-KAB673-FBQR		\
DS-K1T673TDWX					Support

5. ISAPI protocol makes it easier for integration with third-party software;
6. Remote video intercom and unlock door from Hik-Connect App on your mobile/Pad
7. Support Hik-ProConnect platform to realize Cloud access control and time attendance management
8. Support ISUP 5.0 protocol to manage devices located in different locations;
9. When open device for the first time, wizard for activation and basic configuration. Including select

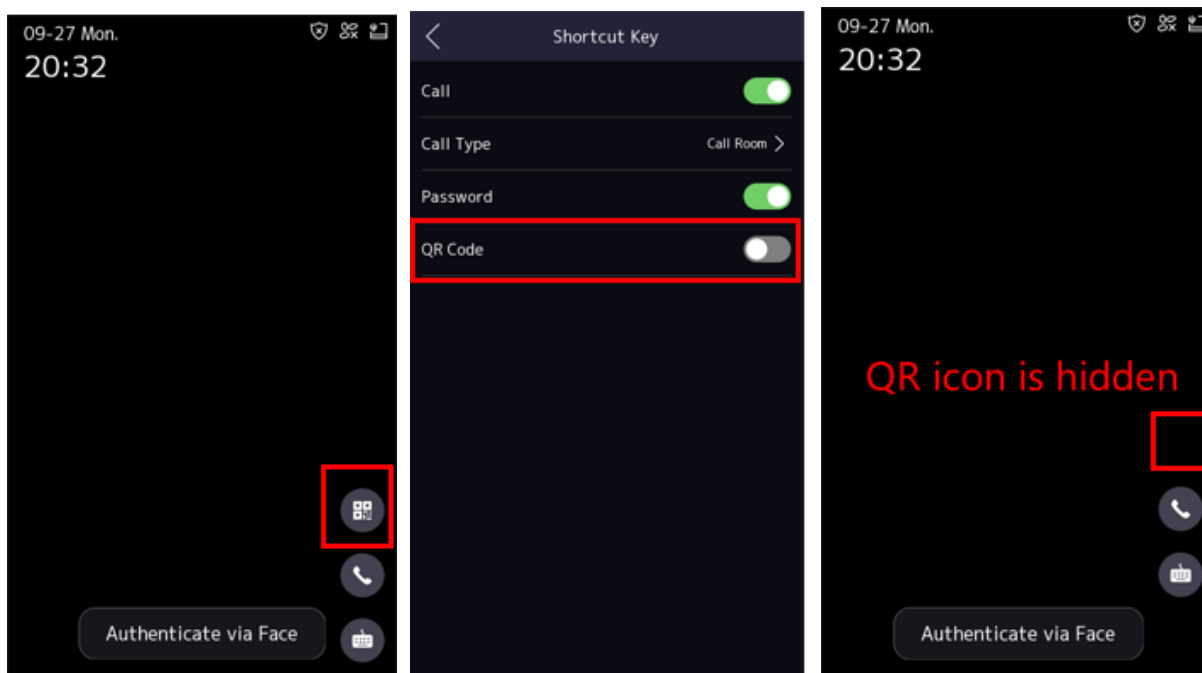
language, application mode, select and configure network, Hik-Connect, privacy settings, add administrator face and card.



10. USB modules support hot plugging, optional QR (model with -QR), fingerprint(model with -F), and Bluetooth(model with -B) function.

Note:

- a. Bluetooth function will be available in future firmware to work together with mobile APP.
- b. Supported QR Code format: QR Code, Micro QR, Code128, Code39, Codabar
- c. How to authenticate QR code:
 - 1) When The QR code icon is displayed on the standby interface: click on the icon, and then show the QR code in the front of module;
 - 2) When hiding the QR code icon on the standby interface: show the QR code icon directly.



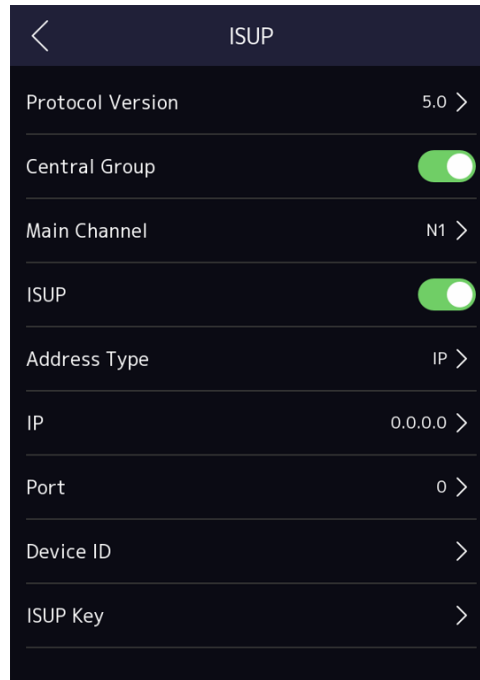
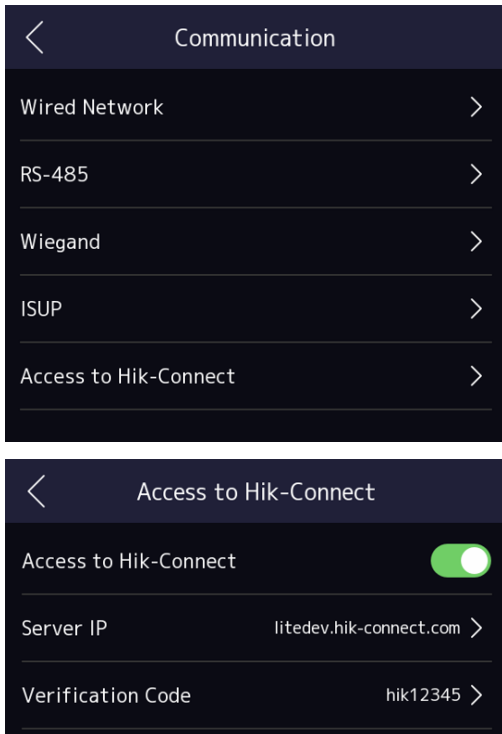
11. Support breathing light, it can be used to indicate the device position in the night
 - a. *In the standby status, the breathing light will cycle from dark to bright, and then to dark.*
 - b. *When there is an authentication event, the breathing light will stay on for a while, and then the breathing indication state will be restored*

12. Support 3.5mm standard audio output interface in the back of device.

Speakers can be connected externally, and the output sound can be played by the speakers. Supports hot plugging, which can be plugged in or unplugged at any time before and after the device is powered on. After the speaker is plugged in, the sound will be played by the speaker, and the sound will be played by the device's own amplifier when it is unplugged.

Special circumstances: When intercom function is enabled, whether or not a speaker is plugged in, the voice will be played locally by the device. (Prevent the echo interference)

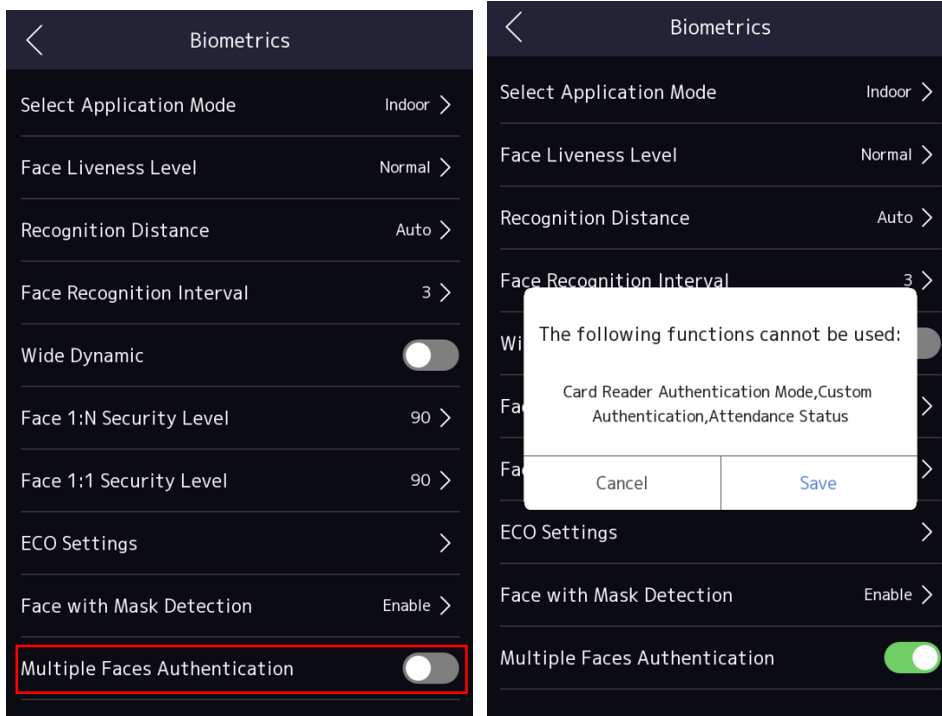
13. Self-defined shortcut key (Call Room, Call Center, Call Specified Room, Call App and Password) on main interface;
14. Configure ISUP and Hik-Connect parameter in device local menu



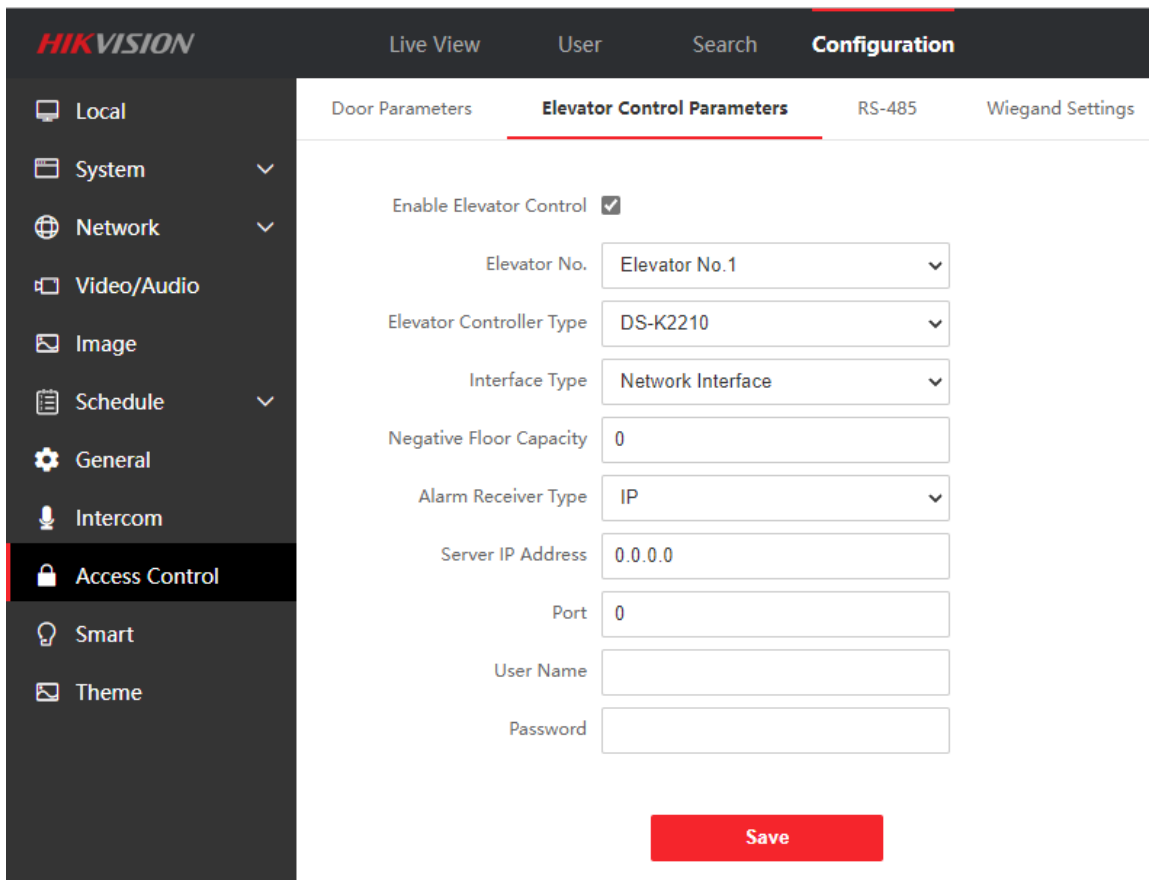
15. Login and configure device in web client via browser;



16. Support multiple face authentication(maximum 5 person can be recognized at the same time)
Note: after enable the function, card reader authentication mode, custom authentication and attendance status function cannot be used.

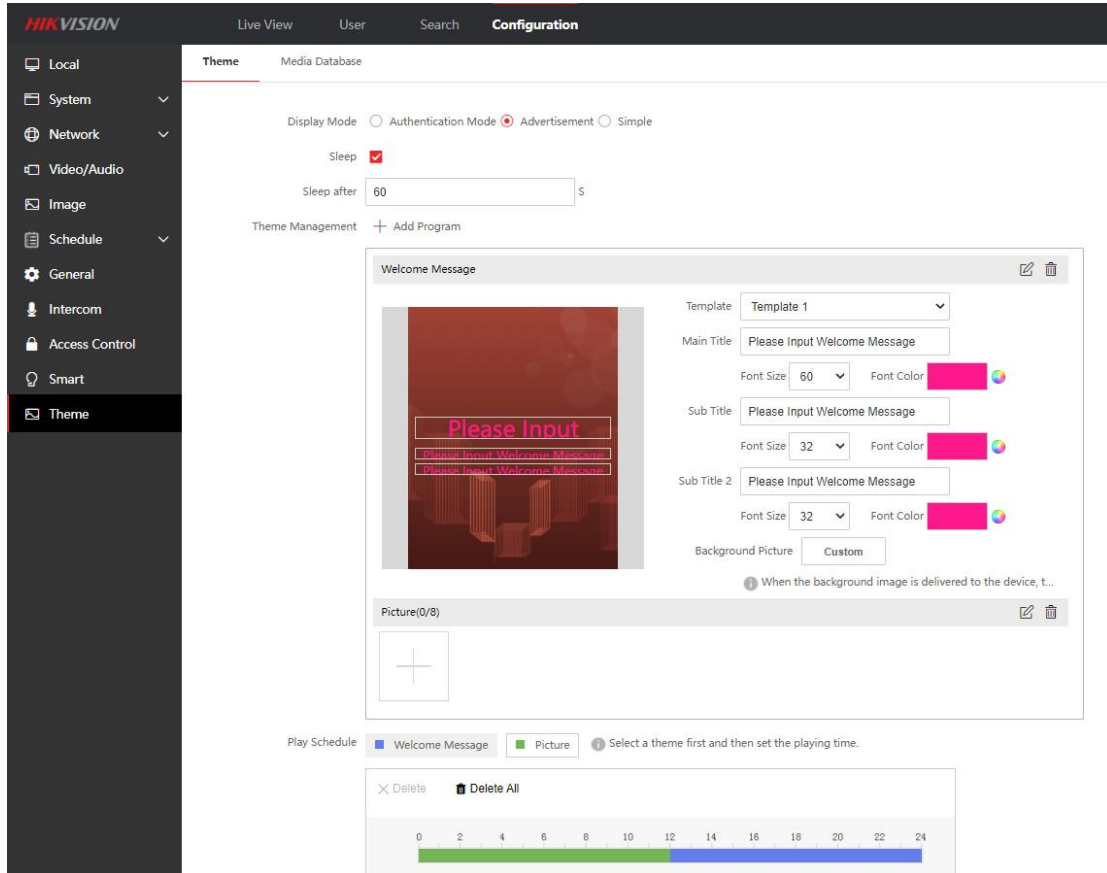


17. Support **call elevator** function.



18. Self-defined voice prompt (TTS function, English only) and screen display info (user ID, name and face picture) for authentication.

19. Self-defined welcome message and picture and displayed by schedule.

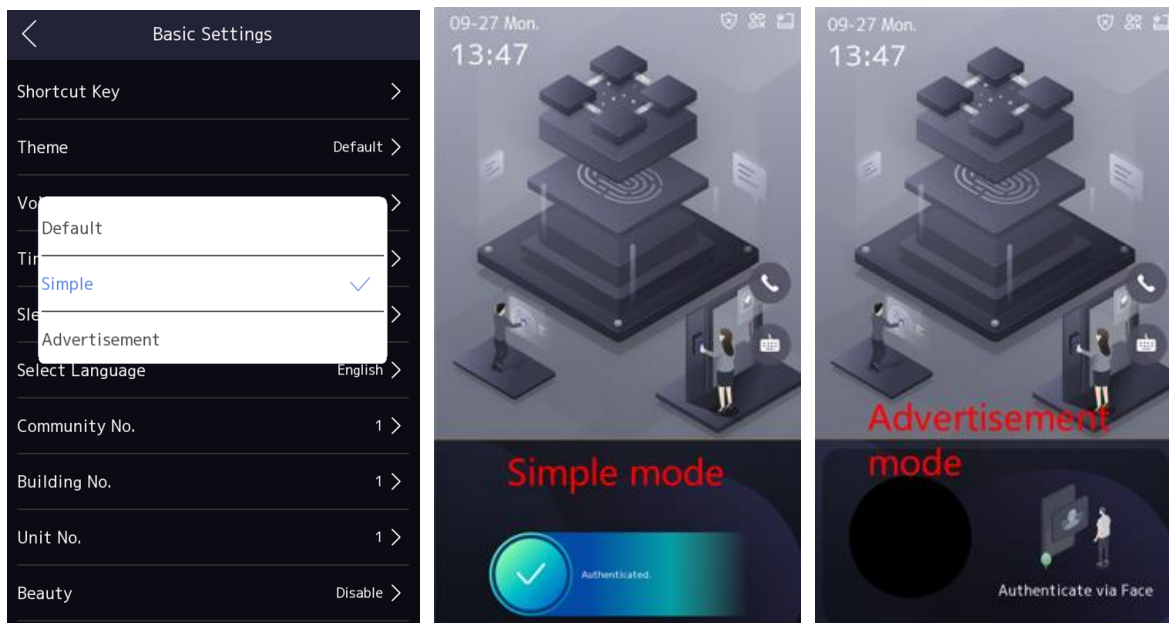


20. Support simple mode, advertisement mode when authenticating.

Default mode: Full screen live view when authenticating face

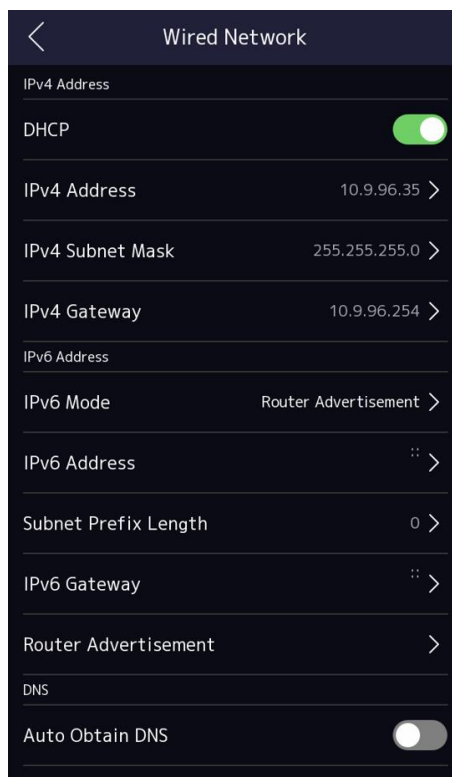
Simple mode: Display wallpaper on the top and no live view when authenticate face

Advertisement mode: The screen will display the wallpaper on the top area, and a small round circle area for live view in the bottom.



21. Network

Support TCP/IP(IPv4&IPv6), Wi-Fi (Model with -W), adapt to LAN(network) or WAN(ISUP 5.0) network environment

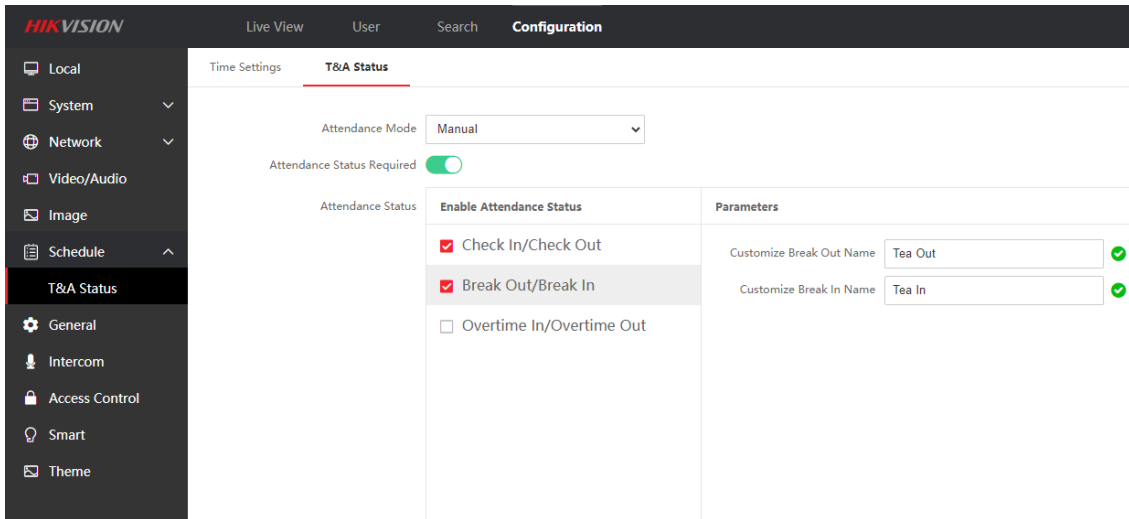


Note for IPv6:

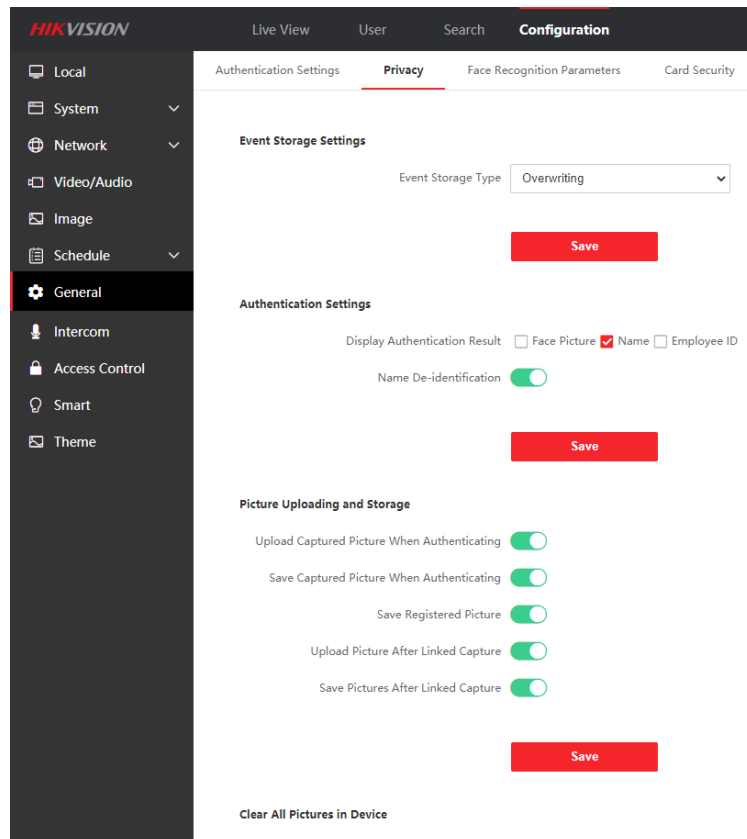
Function	Ipv4	Ipv6
HTTP/HTTPS (80/443 port)	Support	Support
SDK (8000/8443 port)	Support	Not Support
ISUP	Support	Not Support
Hik-Connect	Support	Not Support
Picture server	Support	Only support local server work as picture server, Not Support storage、KMS
Live view (RTSP)	Support	Support
NTP	Support	Support
DHCP(V6)	Support	Support
WIFI	Support	Support
DNS	Support	Support

22. Function

- a. Support face mask recognition.
- b. Video intercom with indoor station, master station and platform;
- c. Multiple verification modes: Face, card, fingerprint(-F only), PIN code;
- d. Face recognition distance ranges from 0.3 to 3 meters;
- e. Support check in/check out/break out/break in/overtime in/overtime out attendance status, and self-define status name;



- f. Support privacy protection, customer can define the privacy related parameter, such as Event Storage Settings, Picture Uploading and Storage, Clear All Pictures in Device



Customer Impact and Recommended Action

This update refers to function/compatibility improvement and will take effect automatically after the Date of Change. We are very sorry for any inconvenience of use-habit changes caused by this action. For any questions and request for this firmware, please contact our local technical support team.

Note:

- Hikvision reserves the right to change, alter or withdraw the above notification without prior notice.
- Product design and specifications are subject to change without prior notice.
- The Hikvision firmware may contain errors known as errata, which may cause the product to deviate from published specifications. Current characterized errata are available on request.
- Hikvision is not liable for any typing or printing errors.

Hikvision Digital Technology CO., Ltd.
No. 555 Qianmo Road, Binjiang District, Hangzhou 310051,
China
Tel: +86-571-8807-5998
FAX: +86-571-8993-5635
Email: overseabusiness@hikvision.com