

DS-K1T680 Series MinMoe Terminal Release Note (2020-11-23)

Device Model: DS-K1T680D(F)-E1 DS-K1T680D(F)W DS-K1T680D(F)G DS-K1T680D(F)G1 Naming Rule: D for M1 card, Desfire card, Felica card E1 for POE W for Wi-Fi F for fingerprint G1 for 3/4G, supported in Australia, Taiwan (China) and Latin America; G for 3/4G, supported in Europe, the Middle East, Africa, India, and Most Areas of Asia-Pacific (excluding Japan and Taiwan (China))	Firmware Version	ARM : ACS_680_AI3_EN_STD_V3.1.2_build200925 ACS_680_AI3_EN_NEU_V3.1.2_build200925
	SDK	HCNetSDKV6.1.5.15_build20200713_win32_EN
	iVMS-4200 Version	iVMS-4200 AC(V1.0.3.17_E).exe

Reason of Upgrade

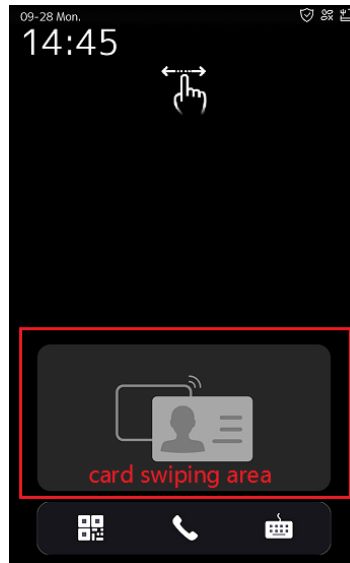
New model DS-K1T680 series face recognition terminals first time released.



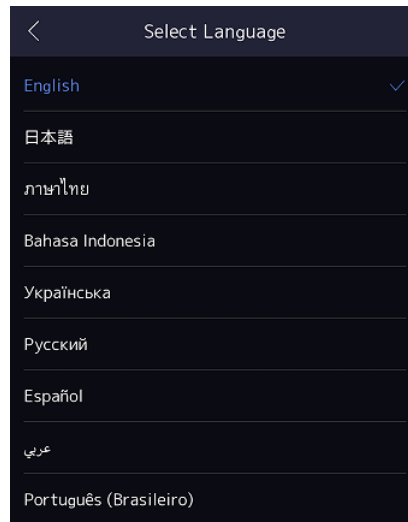
New Features

1. 8-inch touch screen with **bezel-less design**, 2 MP wide-angle dual-lens camera with WDR feature;
2. Connect external card reader or access controller via RS485 or Wiegand26/34 protocol
3. Face recognition duration < 0.2 s/User; face recognition accuracy rate ≥ 99%
4. Support reading **Desfire** card number/content, **Felica** card number, Mifare 1 card number
5. Support **password only** authentication mode (password can be configured from iVMS or HCP only)

- 6. Support **POE** (device model with -E1)
- 7. Support hard-hat detection function
- 8. Presents card on the screen to authenticate card permission



- 9. Multiple languages: English, **Japanese, Thai, Indonesia, Ukrainian, Russian, Spanish, Arabic and Brazilian Portuguese**



10. Face, card and event capacity

	Face	Card	Event	Fingerprint	POE	Wi-Fi	3G/4G
DS-K1T680D-E1	Normal mode: 100,000	100,000	150,000	N/A	Support	N/A	N/A
DS-K1T680DF-E1				10,000	Support	N/A	N/A
DS-K1T680DW				N/A	N/A	Support	N/A
DS-K1T680DFW				10,000	N/A	Support	N/A
DS-K1T680DG				N/A	N/A	N/A	Support
DS-K1T680DFG				10,000	N/A	N/A	Support
DS-K1T680DG1				N/A	N/A	N/A	Support
DS-K1T680DFG1				10,000	N/A	N/A	Support

DS-K1T680D(F)G:

Supported in Europe, the Middle East, Africa, India, and Most Areas of Asia-Pacific (excluding Japan and Taiwan (China))

LTE FDD: B1/B3/B7/B8/B20/B28A

WCDMA: B1/B8

GSM: B3/B8

DS-K1T680D(F)G1:

Supported in Australia, Taiwan (China) and Latin America

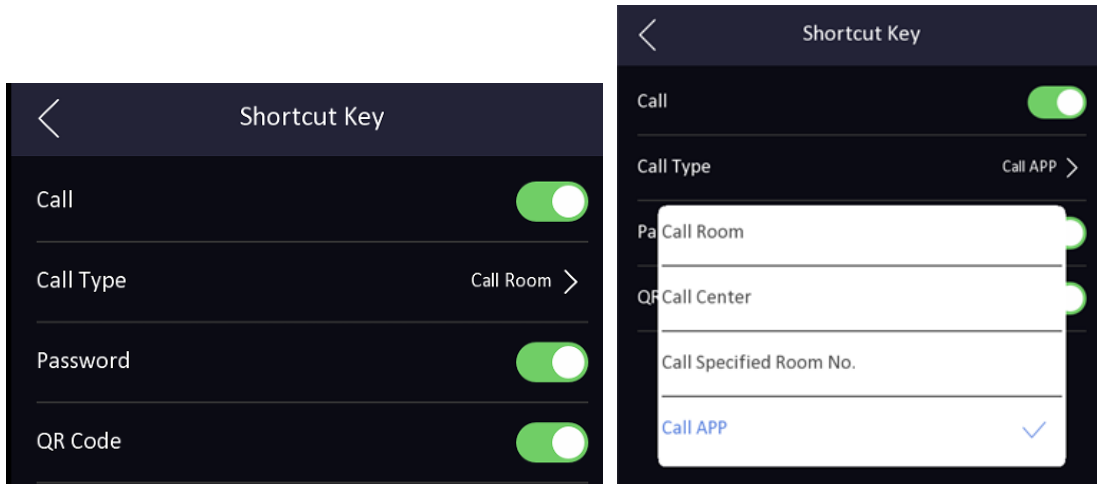
LTE FDD: B1/B2/B3/B4/B5/B7/B8/B28

LTE TDD: B40

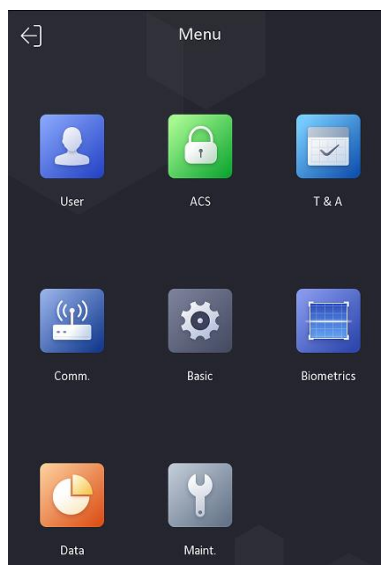
WCDMA: B1/B2/B5/B8

GSM: B2/B3/B5/B8

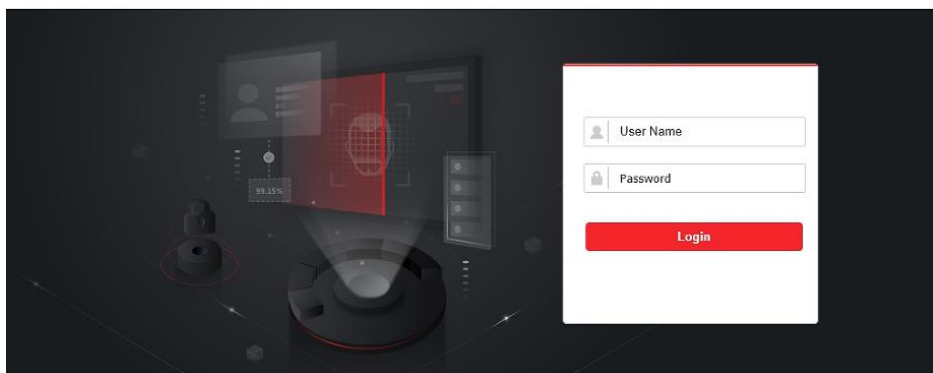
11. **ISAPI** protocol makes it easier to integrate with third-party software;
12. Remote video intercom and unlock door from **Hik-Connect** App on your mobile/Pad
13. Support **ISUP 5.0**(EHome 5.0) protocol to manage devices located in different location;
14. Self-defined shortcut key (QR Code, Call and Password) on main interface, call **Hik-Connect App**.



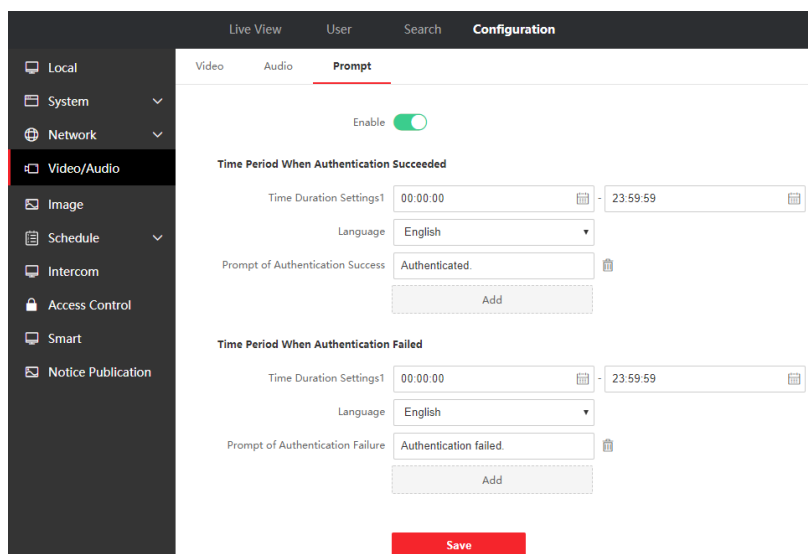
15. New UI design in device menu interface;



16. Login and configure device in **web client** via browser to realize person management, parameter configuration, log search and system maintenance;



17. **Self-defined voice prompt** (TTS function, English only) and **screen display info** (user ID, name and face picture) for authentication result, set different voice prompts maximum for 4 time periods.

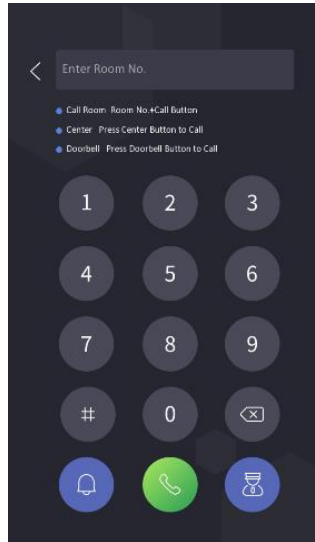


18. Network

Support TCP/IP , Wi-Fi and 3/4G, adapt to LAN (network) or WAN (ISUP 5.0) network environment

19. Function

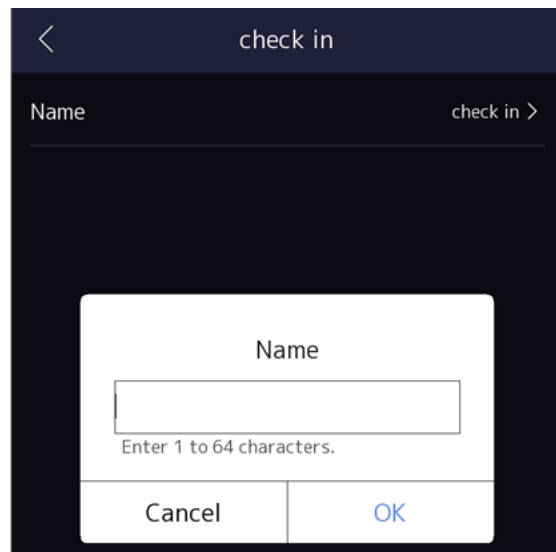
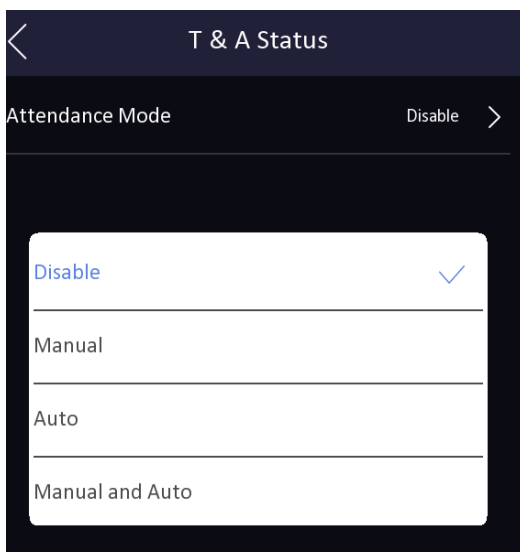
- a. Video intercom with indoor station, master station, hik-connect mobile app and platform;



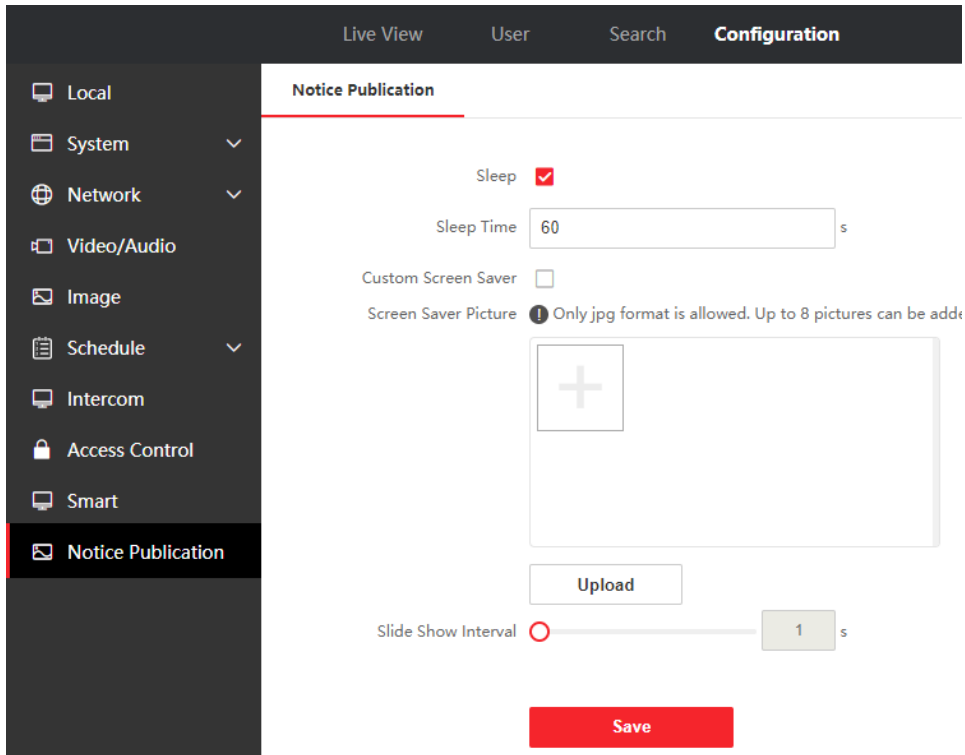
- b. Status bar shows device status in real time, include network status, deployment/arm status, Hik-Connect server connection status



- c. Multiple verification modes: Face, card, password and QR code;
- d. Face recognition distance ranges from 0.3 to 3 meters;
- e. Support check in/check out/break out/break in/overtime in/overtime out status, and attendance status name supports custom modification



f. Custom standby background image



g. Supports face recognition in low illumination

h. Live view on the platform, H.264

Customer Impact and Recommended Action

This update refers to function/compatibility improvement and will take effect automatically after the Date of Change. We are very sorry for any inconvenience of use-habit changes caused by this action. For any questions and request for this firmware, please contact our local technical support team.

Note:

- Hikvision reserves the right to change, alter or withdraw the above notification without prior notice.
- Product design and specifications are subject to change without prior notice.
- The Hikvision firmware may contain errors known as errata, which may cause the product to deviate from published specifications. Current characterized errata are available on request.
- Hikvision is not liable for any typing or printing errors.

Hikvision Digital Technology CO., Ltd.
No. 555 Qianmo Road, Binjiang District, Hangzhou 310051,
China
Tel: +86-571-8807-5998
FAX: +86-571-8993-5635
Email: overseabusiness@hikvision.com