

How to calibrate fusion mode for handheld thermography camera

Preparation

1. Make sure that computer has installed SADP tool.
2. Running SecureCRT software for get information of device.

Steps

1. Make the computer and device in the same network.
 - 1.1 Select the **Local Settings** (🔒) from the main menu.
 - 1.2 Go to **Local Settings>Device Settings>Wi-Fi Settings**.

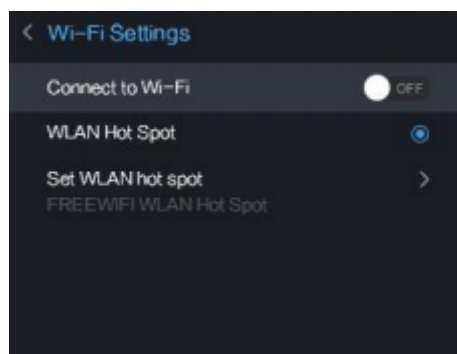


Figure 1

1.3.1 Tap on **WLAN Hot Spot** to enable the WLAN hot spot function. Tap **Set WLAN hot spot** to display password. The default password is 12345678.

1.3.2 Or Tap on **Connect to Wi-Fi** to enable Wi-Fi, and the searched Wi-Fi will be listed below.

1.4 Connect your computer to the WLAN Hot Spot of the camera or the same Wi-Fi source of the camera. (Take WLAN Hot Spot for example)

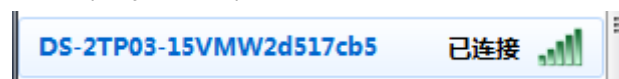


Figure 2

2. Search the device by SADP tool. Then active the device and set the strong password to the device.

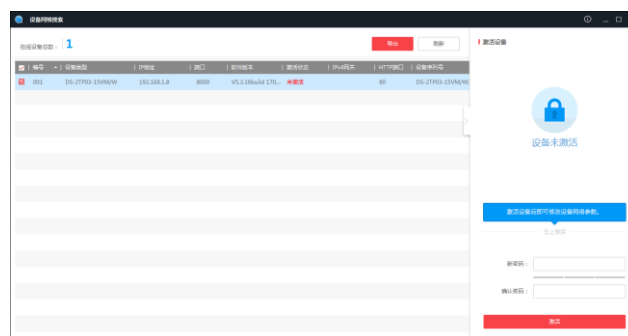
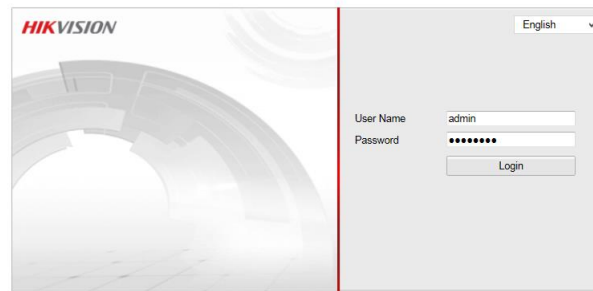


Figure 3

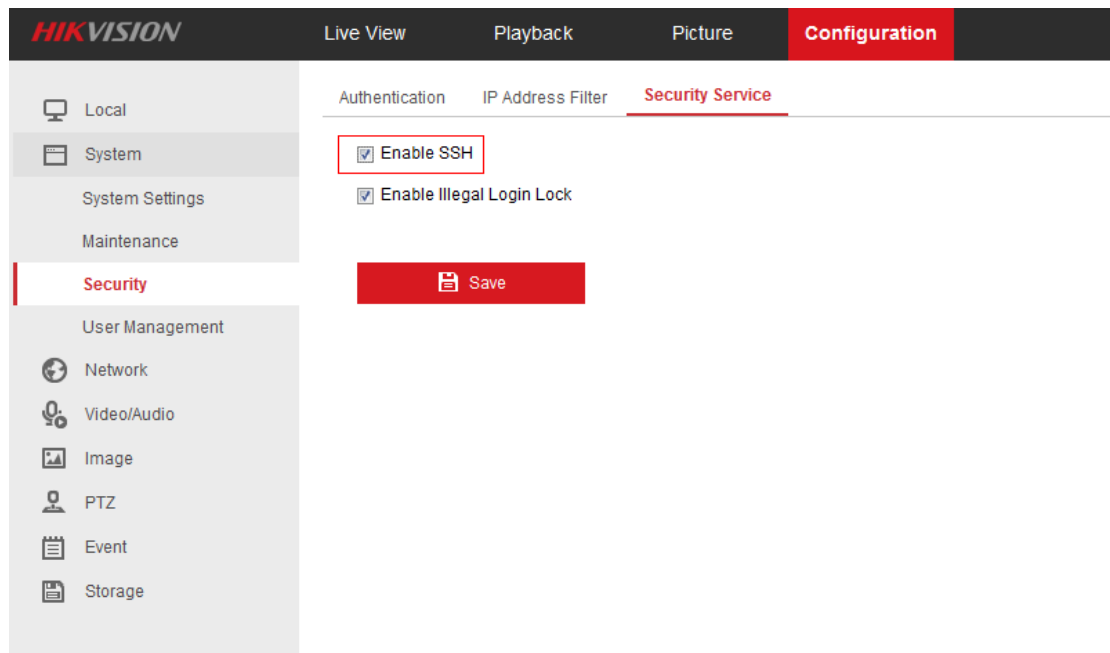
3. Make sure the IP address of device and computer is in the same network segment. Then

connect the device via web browser.

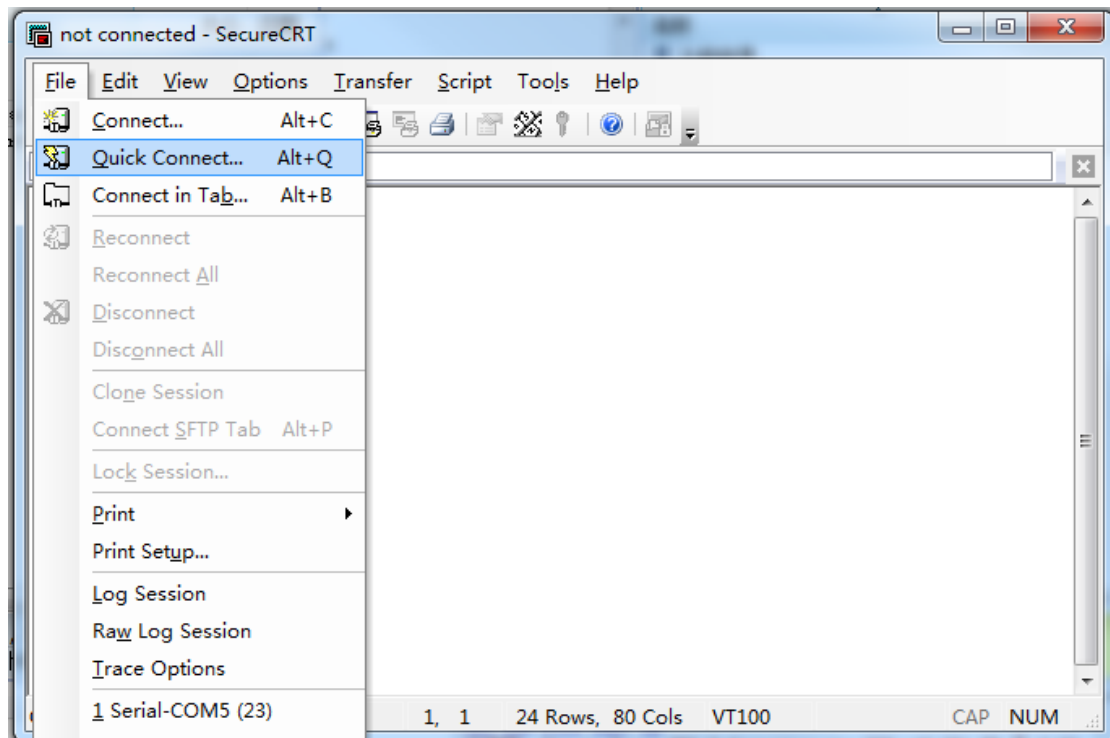


©Hikvision Digital Technology Co., Ltd. All Rights Reserved.

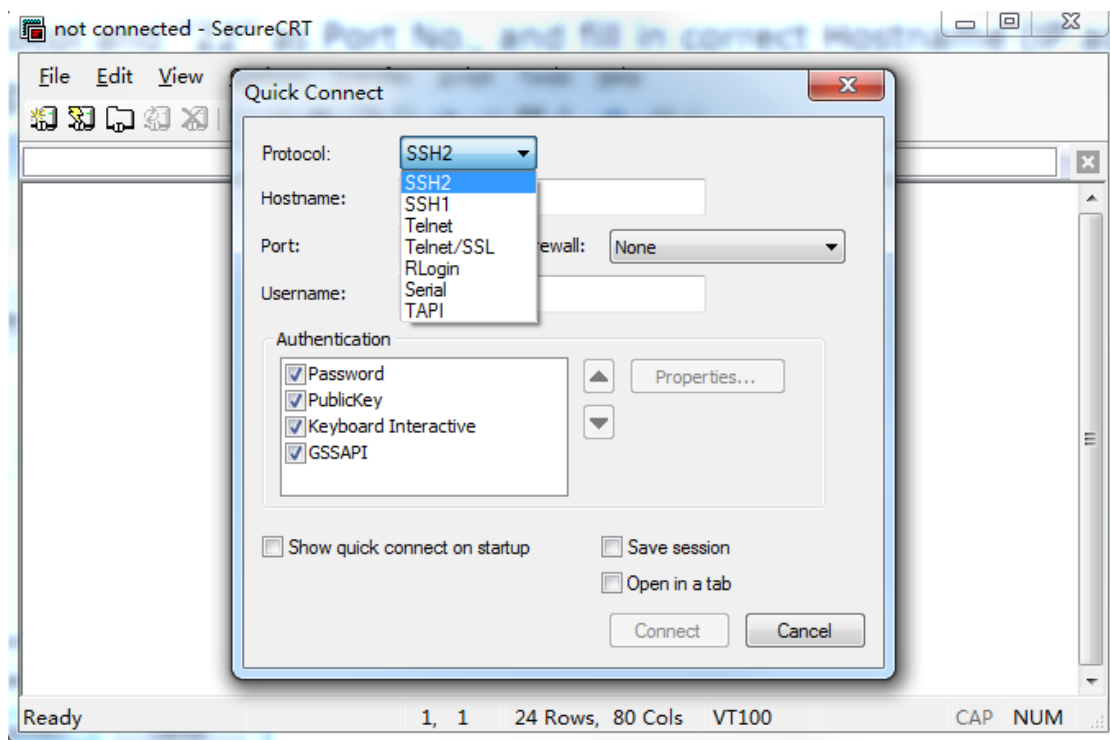
4. Go to **Configuration** → **System** → **Security** → **Security Service**. Enable SSH. Click **save** to save settings.



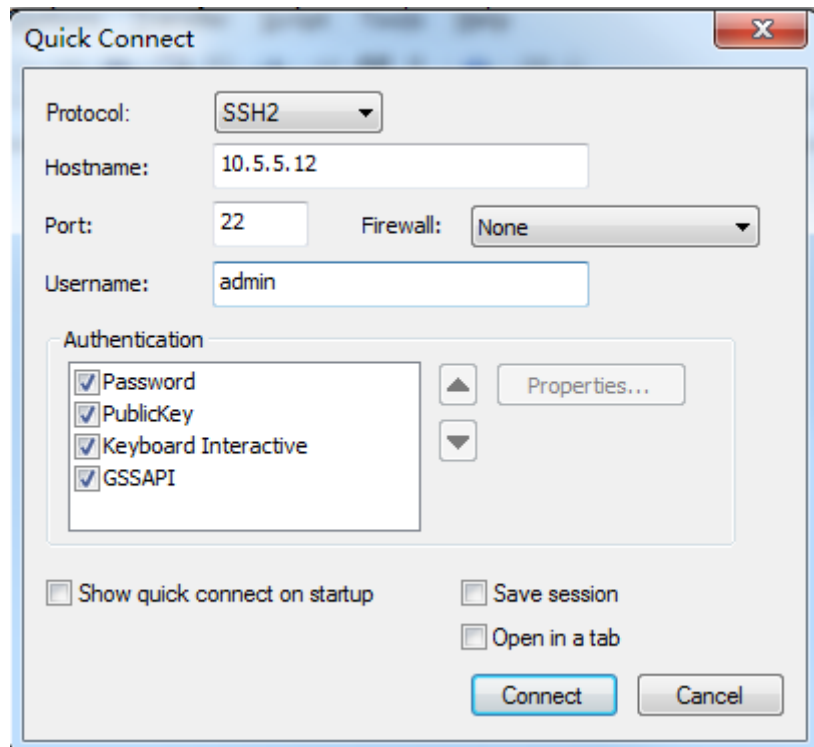
5. Open **SecureCRT** and click **Quick Connect**.



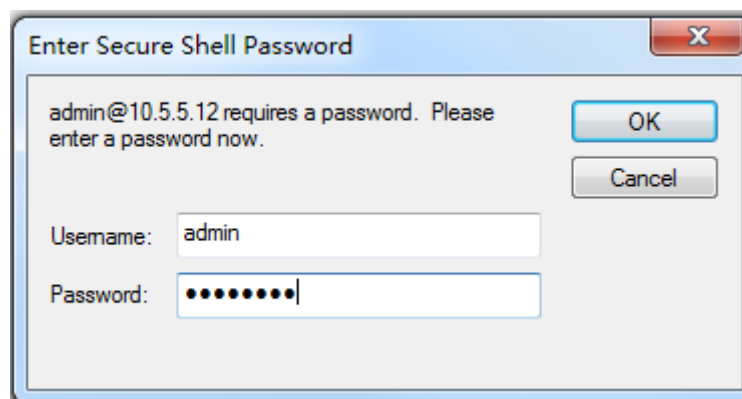
6. Select SSH2.



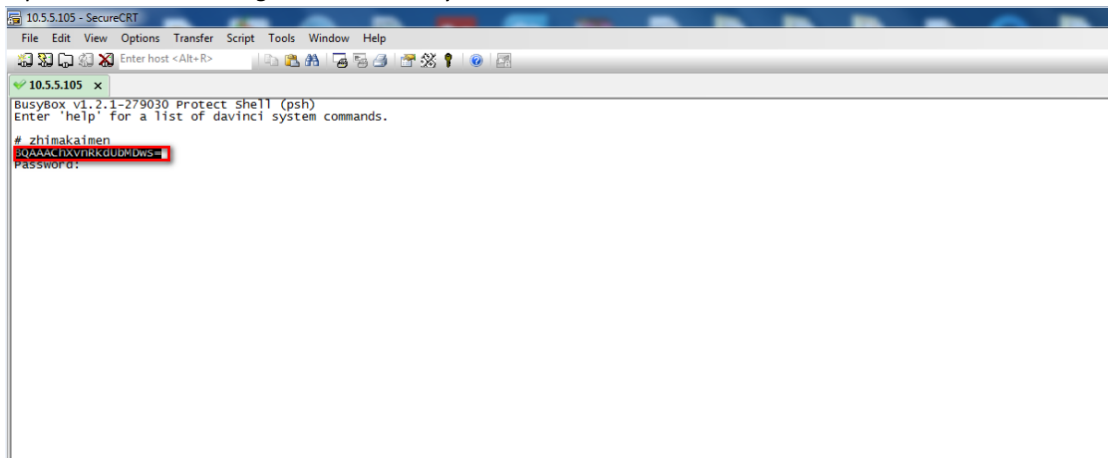
Input the **Hostname** (IP address), port (22) and user name. Click **Connect**.



7. Input the password and press **OK**.



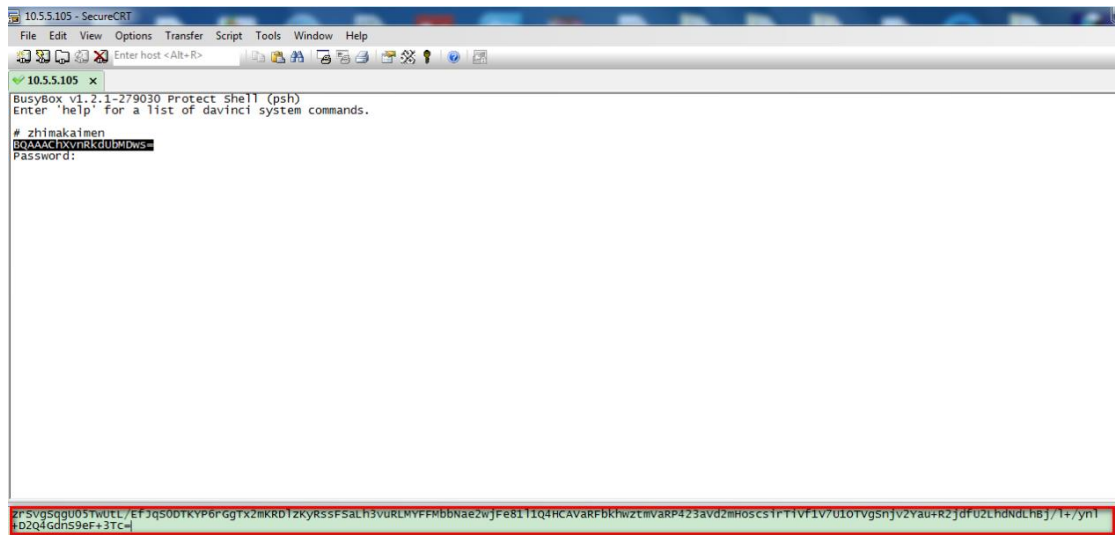
8. Input "zhimakaimen", get the device key.



9. Access to OA System, Tech-Support->PSH QUERY->PSH Shell, Input the device key, then get the security code.



10. *Input this security code, then enter to the device debug mode.*



11. *Input "setFusionParam 3 42 42 130 30", then check the image mode.*

First Choice for Security Professionals

HIKVISION Technical Support