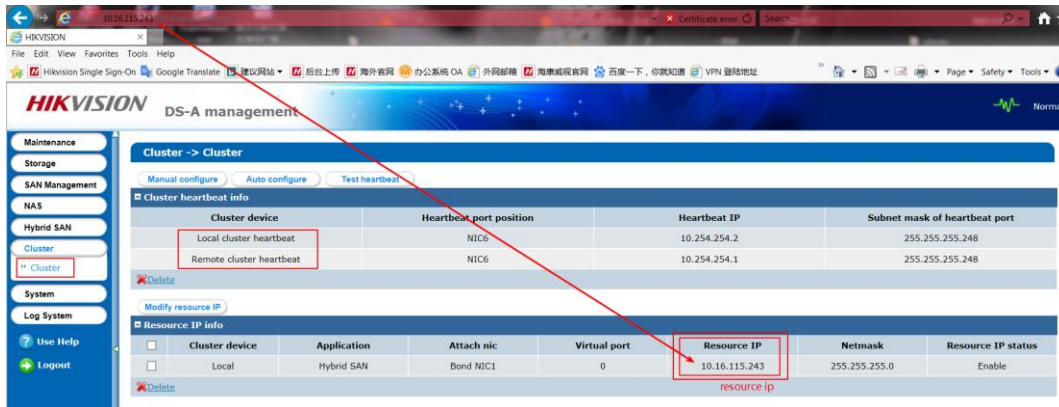
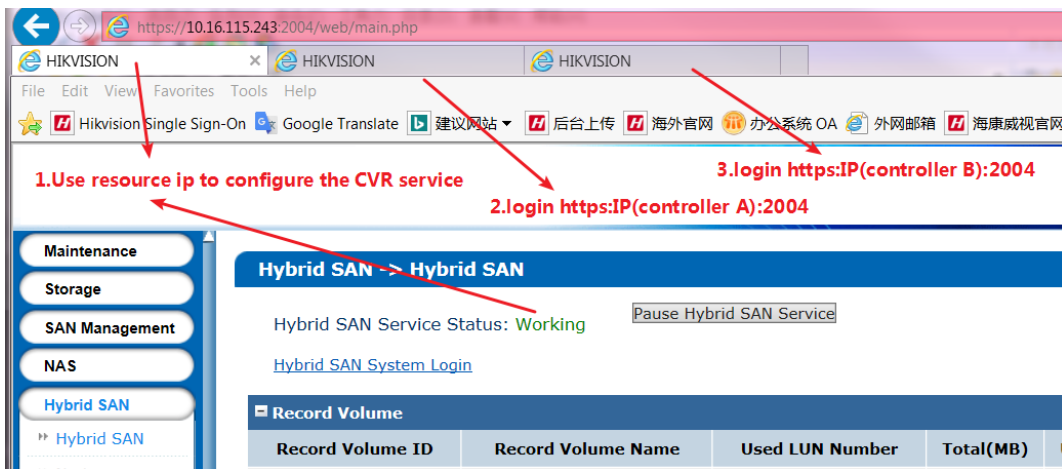


### For dual-controller device

**Note:** Firstly, make sure your dual-controller device deploy in correct mode. As dual-controller device have two controllers, each controller have an IP separately , and we also need create a resource IP , so before you upgrade for the dual-controller device , let it work in dual-controller mode. You can check the Cluster interface in the 2004 page shown as below.



- It's only allow to upgrade when device CVR status is **working**. So the right step should be
1. Login resource ip to check CVR service ([https://IP \(resource\):2004](https://IP (resource):2004)) .Make sure the CVR service status is **Working**.
  2. Then you need to upgrade in two controller separately, login in [https://IP \(controller A\):2004](https://IP (controller A):2004) and [https://IP \(controller B\):2004](https://IP (controller B):2004); Do the upgrade operation in these two controller physical ip.



### 237-2 Firmware Package:

文件名	文件大小	文件类型	最
..		文件夹	20:
history		文件夹	20:
10storos-202005151230-Fix-CVR_237_FixLoad_run_repair-915.bin	358,412	BIN 文件	20:
11storos-202003271100-B_OS-Network_all_purpose_upgrade_package-915.bin	99,598	BIN 文件	20:
1storos-202005121525-B_FW-Multi_V2.32sp1-915.bin	35,170,672	BIN 文件	20:
2storos-202002280918-B_OS_915-storOS_N39152_CVR237sp1-915.bin	35,721,616	BIN 文件	20:
3storos-202005081112-B-CVR_237-2_Oversea_Main_Release-915.bin	39,757,431	BIN 文件	20:
4storos-202004211351-B-CVR_237-2_Oversea_Hiklib_Release-915.bin	15,538,610	BIN 文件	20:
5storos-201905060619-B-TO-EN-STD-CVR-suse_x64-91X.bin	5,426,924	BIN 文件	20:
6storos-201912161640-B_SAN-baseline-915.bin	3,773,714	BIN 文件	20:
7storos-201704192037-B_OS_915-storOS_max_lun_64T-915.bin	53,237	BIN 文件	20:
8storos-202007150823-C_CVR237-2-DelAlarmCenter-915.bin	1,502,306	BIN 文件	20:
9storos-202008041017-Fix-CVR_AlarmChannelError_237-2-8-915.bin	217,490	BIN 文件	20:
How to Upgrade Hybrid SAN Firmware to V237-2 (via web) .pdf	959,071	Adobe Ac...	20:

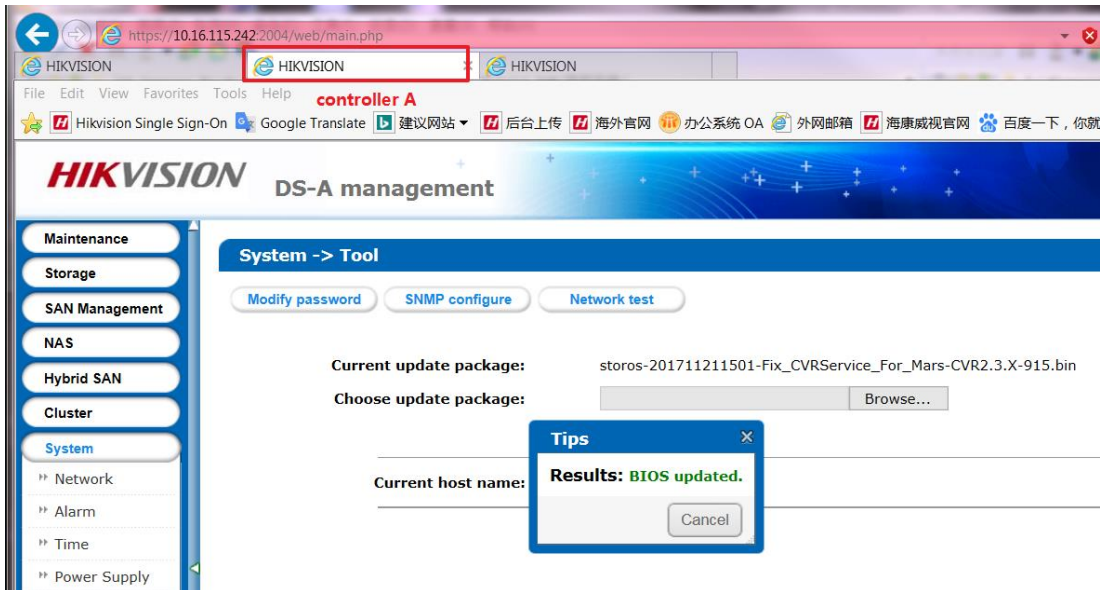
file size

## Steps:

**Step1:** Upgrade **storos-201711211501-Fix\_CVRService\_For\_Mars-CVR2.3.X-915** (Special for dual controller device) in controller A, then do same operation in controller B

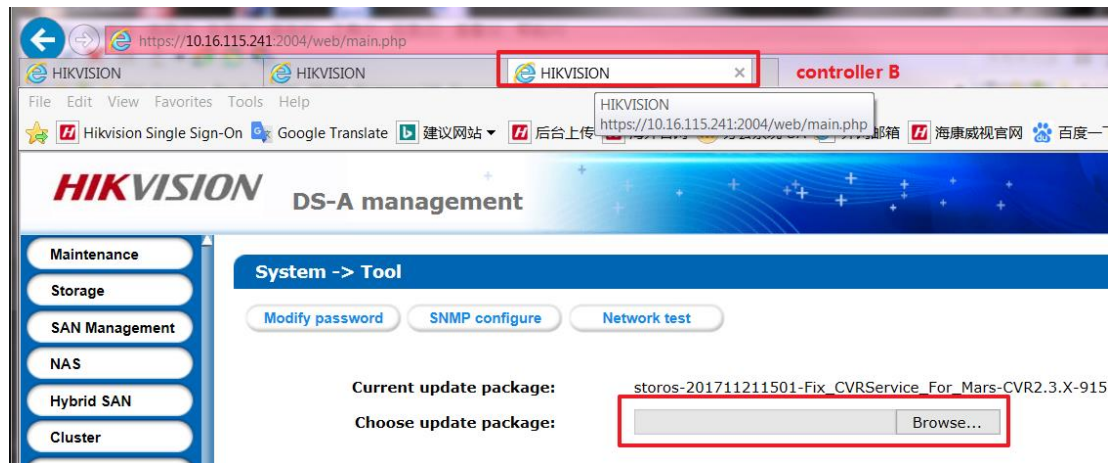
### Controller A:

Please wait several minutes until it shows below tips



### Controller B:

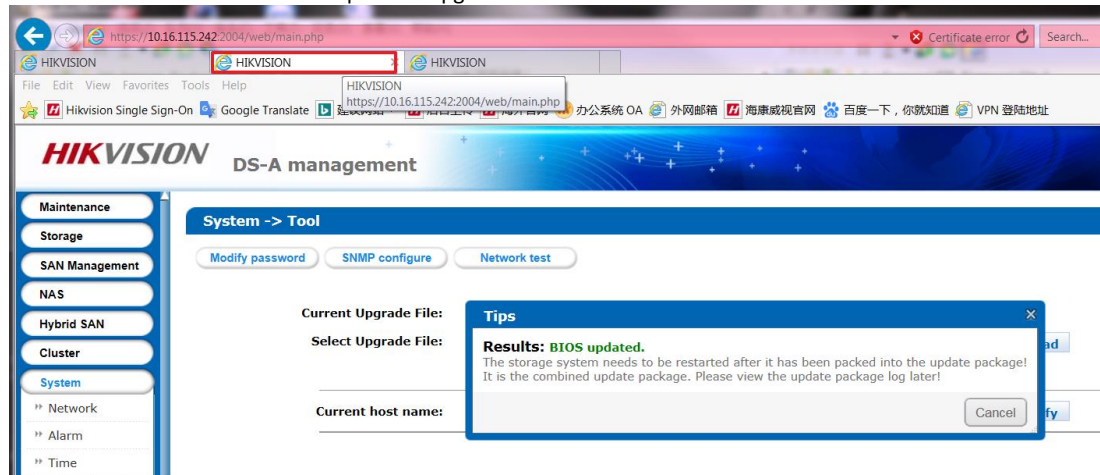
Please wait several minutes until it shows below tips



**Step2:** Upgrade **1storos-202002280655-B\_FW-Multi\_V2.31sp3-915** in controller A

### Controller A:

Please wait 3 minutes after it shows below tips, and this is a combined package, please enter the upgrade log interface to double check if all the patches upgrade success or not.



Log System -> Upgrade Log		
Upgrade Log Information (Total: 1682)		
Date	Log Content	
May 14 2020 10:41:41	Upload bios success (storos-201908191320-FW-pcie_aspm_off-915.bin)	last patch
May 14 2020 10:41:40	Upload bios success (storos-201911122155-FW-reboot_acpi-915.bin)	
May 14 2020 10:41:39	Upload bios success (storos-201907221515-B_FW-disk_health_mgmt_1_5-915...	
May 14 2020 10:41:38	Upload bios success (storos-202002191558-B_FW-enviroinfo_table-V2.73-9...	
May 14 2020 10:41:36	Upload bios success (storos-202002270811-B_FW-ses_interface_V2.62-915...	
May 14 2020 10:41:12	Upload bios success (storos-201910181734-B_FW-smartctl_1_4_4-915.bin)	
May 14 2020 10:41:11	Upload bios success (storos-201910181925-B_FW-hba_mv94xx1.4.20M18-34_e...	
May 14 2020 10:41:09	Upload bios success (storos-202002221004-B_FW-set_Avoid_Dead_3_1-915.b...	
May 14 2020 10:41:01	Upload bios success (storos-202002221031-B_FW-watchdog_V1.19-915.bin)	
May 14 2020 10:40:55	Upload bios success (storos-201902190808-B_FW-driver_mpt3sas_v1_0_5-91...	

**Step3:** Upgrade **2storos-202002280918-B\_OS\_915-storOS\_N39152\_CVR237sp1-915** in controller A

**Step4:** Upgrade **3storos-202005081112-B-CVR\_237-2\_Oversea\_Main\_Release-915** in controller A

**Step5:** Upgrade **4storos-202004211351-B-CVR\_237-2\_Oversea\_Hiklib\_Release-915** in controller A

**Step6:** Upgrade **5storos-201905060619-B-TO-EN-STD-CVR-suse\_x64-91X** in controller A

**Step7:** Upgrade **6storos-201912161640-B\_SAN-baseline-915** in controller A

**Step8:** Upgrade **7storos-201704192037-B\_OS\_915-storOS\_max\_lun\_64T-915.bin** in controller A

**Step9:** Upgrade **8storos-202007150823-C\_CVR237-2-DelAlarmCenter-915.bin** in controller A

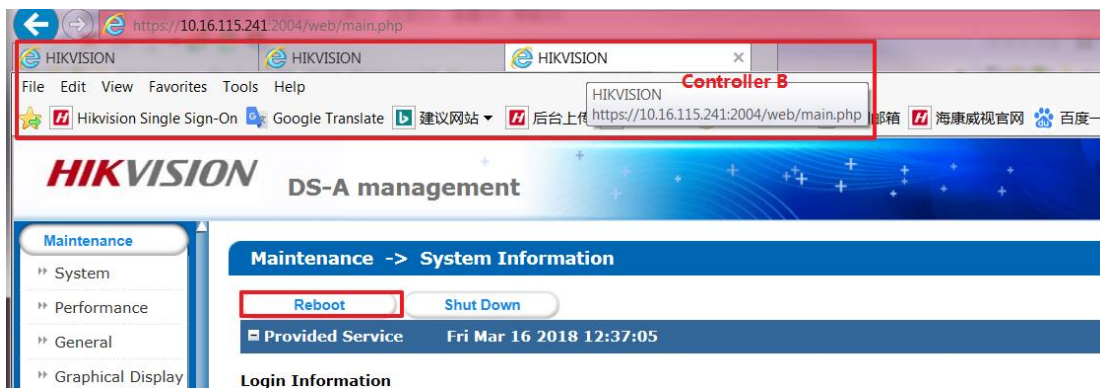
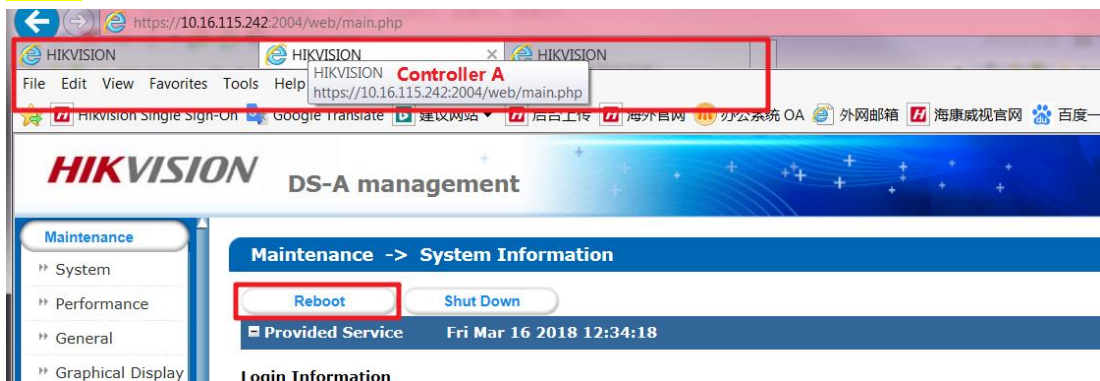
**Step10:** Upgrade **9storos-202008041017-Fix-CVR\_AlarmChannelError\_237-2-8-915.bin** in controller A

**Step11:** Upgrade **10storos-202005151230-Fix-CVR\_237\_FixLoad\_run\_repair-915.bin** in controller A

**Step12:** Upgrade **11storos-202003271100-B\_OS-Network\_all\_purpose\_upgrade\_package-915.bin** in controller A

**Step13:** then do same step2、step3、step4、....、step11、step12 in controller B

**Step14:** Reboot both of **controller A** and **controller B**.



**Upgrade done**

## HIKVISION DS-A82024D management

Intelligent, individual, economic and reliable data storage.

**Log in to the System:** Basic Management

**User Name:** web\_admin

**Password:**

**Mode:** Advanced Mode

HIKVISION DS-A82024D  
System Version:Hybrid\_SAN V2.3.7-2 Device Serial No.:20120808

HIKVISION Copyright@ © 2018

**First Choice for Security Professionals**

**HIKVISION Technical Support**