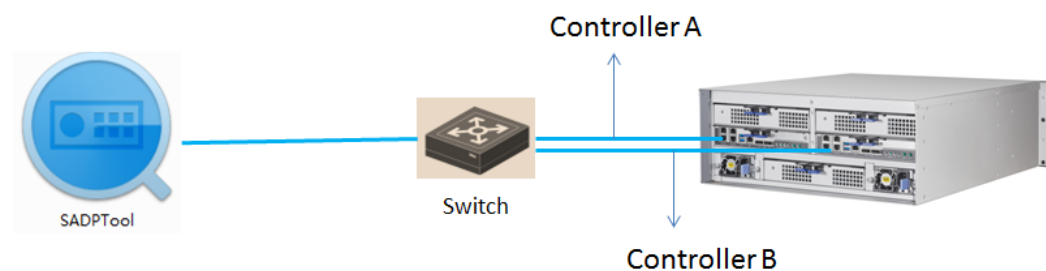


How to Configure Dual Controller Device based on IVMS-4200

Note: This document will show you how to configure dual controller device, and make recording schedule based on IVM-4200.

Steps

1. For dual controller device, you need to connect two network cable for each controller. So you can find these two controller IP address in SADP tool



The screenshot shows the SADP tool interface. At the top, it displays 'Total number of online devices: 37'. Below this is a table of devices. Two devices, ID 035 and 036, are highlighted with a red box. To the right of the table is a 'Modify Network Parameters' panel with various input fields.

ID	Device Type	Security	IPv4 Address	Port	IPv4 Gateway	Software Version	HTTP Port	Device Serial No.
022	iDS-2CD6024FWD-A/F	Active	10.5.8.53	8000	10.5.8.254	V5.4.30build 170...	80	iDS-2CD6024FWD
023	DS-2CD40C5F-A	Active	10.5.8.27	8000	10.5.8.254	V5.4.5build 1703...	80	DS-2CD40C5F-A2C
024	DS-2CD2142FWD-IWS	Active	10.5.8.2	8000	10.5.8.254	V5.4.5build 1701...	80	DS-2CD2142FWD
025	STORAGE-SERVER	Active	10.5.8.252	8000		V1.2.1build 1703...	N/A	DS-NVR-V120B2C
026	DS-2CD2T22WD-I3	Active	10.5.8.33	8000	192.168.1.1	V5.4.5build 1701...	80	DS-2CD2T22WD-I
027	DS-KD8102-V	Active	10.5.8.160	8000	10.5.8.254	V1.4.71build 170...	80	DS-KD8102-V012C
028	iDS-2CD6810F/C	Active	10.5.8.101	8000	10.5.8.254	V5.4.6build 1705...	80	iDS-2CD6810F/C2I
029	DS-2DF7286-A	Active	10.5.8.107	8000	10.5.8.254	V5.4.26build 170...	80	DS-2DF7286-A201
030	DS-2CD2D14WD/M	Active	10.5.8.5	8000	10.5.8.254	V5.4.5build 1612...	80	DS-2CD2D14WD/I
031	DS-KV8102-IM	Active	10.5.8.171	8000	10.5.8.254	V1.4.70build 170...	80	DS-KV8102-IM012
032	DS-2CD4816FWD-IZ5	Active	10.5.8.46	8000	10.5.8.254	V5.4.5build 1702...	80	DS-2CD4816FWD-
033	DS-2CD2722F-IS	Active	10.5.8.6	8000	10.5.8.254	V5.4.5build 1704...	80	DS-2CD2722F-IS
034	DS-2CD6520D-IO	Active	10.5.8.40	8000	10.5.8.254	V5.3.2build 1505...	80	DS-2CD6520D-IO
035	DS-A	Inactive	192.168.0.101	8000	192.168.0.1	Storos-V9.1.5_10...	N/A	651772114
036	DS-A	Inactive	192.168.0.100	8000	192.168.0.1	Storos-V9.1.5_10...	N/A	651772114
037	DS-A	Active	10.5.8.224	8000	10.5.8.254	Storos-V9.1.5_10...	N/A	557792865

The 'Modify Network Parameters' panel on the right includes fields for: Enable DHCP, Device Serial No., IP Address, Port, Subnet Mask, Gateway, IPv6 Address, IPv6 Gateway, IPv6 Prefix Length, HTTP Port, Security Verification, Admin Password, and a 'Forgot Password' link. A 'Modify' button is at the bottom.

2. Activate the two controller device SADP tool. And then you need to configure the IP parameter for each controller. **Note:** each controller need to be activated and allocate different IP address.

The screenshot shows the SADP tool interface with the 'Activate the Device' dialog box open for device ID 036. The dialog box contains a lock icon, the text 'The device is not activated.', and a message: 'You can modify the network parameters after the device activation.' Below this are fields for 'New Password', 'Confirm Password', and an 'Activate' button.

ID	Device Type	Security	IPv4 Address	Port	IPv4 Gateway	Software Version	HTTP Port	Device Serial No.
022	iDS-2CD6024FWD-A/F	Active	10.5.8.53	8000	10.5.8.254	V5.4.30build 170...	80	iDS-2CD6024FWD
023	DS-2CD40C5F-A	Active	10.5.8.27	8000	10.5.8.254	V5.4.5build 1703...	80	DS-2CD40C5F-A2C
024	DS-2CD2142FWD-IWS	Active	10.5.8.2	8000	10.5.8.254	V5.4.5build 1701...	80	DS-2CD2142FWD
025	STORAGE-SERVER	Active	10.5.8.252	8000		V1.2.1build 1703...	N/A	DS-NVR-V120B2C
026	DS-2CD2T22WD-I3	Active	10.5.8.33	8000	192.168.1.1	V5.4.5build 1701...	80	DS-2CD2T22WD-I
027	DS-KD8102-V	Active	10.5.8.160	8000	10.5.8.254	V1.4.71build 170...	80	DS-KD8102-V012C
028	iDS-2CD6810F/C	Active	10.5.8.101	8000	10.5.8.254	V5.4.6build 1705...	80	iDS-2CD6810F/C2I
029	DS-2DF7286-A	Active	10.5.8.107	8000	10.5.8.254	V5.4.26build 170...	80	DS-2DF7286-A201
030	DS-2CD2D14WD/M	Active	10.5.8.5	8000	10.5.8.254	V5.4.5build 1612...	80	DS-2CD2D14WD/I
031	DS-KV8102-IM	Active	10.5.8.171	8000	10.5.8.254	V1.4.70build 170...	80	DS-KV8102-IM012
032	DS-2CD4816FWD-IZ5	Active	10.5.8.46	8000	10.5.8.254	V5.4.5build 1702...	80	DS-2CD4816FWD-
033	DS-2CD2722F-IS	Active	10.5.8.6	8000	10.5.8.254	V5.4.5build 1704...	80	DS-2CD2722F-IS
034	DS-2CD6520D-IO	Active	10.5.8.40	8000	10.5.8.254	V5.3.2build 1505...	80	DS-2CD6520D-IO
035	DS-A	Inactive	192.168.0.101	8000	192.168.0.1	Storos-V9.1.5_10...	N/A	651772114
036	DS-A	Inactive	192.168.0.100	8000	192.168.0.1	Storos-V9.1.5_10...	N/A	651772114
037	DS-A	Active	10.5.8.224	8000	10.5.8.254	Storos-V9.1.5_10...	N/A	557792865

SADP

Total number of online devices: 37

Export Refresh

ID	Device Type	Security	IPv4 Address	Port	IPv4 Gateway	Software Version	HTTP Port	Device Serial No.	
<input type="checkbox"/>	022	IDS-2CD6024FWD-A/F	Active	10.5.8.53	8000	10.5.8.254	V5.4.30build 170...	80	IDS-2CD6024FWD-
<input type="checkbox"/>	023	DS-2CD40C5F-A	Active	10.5.8.27	8000	10.5.8.254	V5.4.5build 1703...	80	DS-2CD40C5F-AZC
<input type="checkbox"/>	024	DS-2CD2142FWD-IWS	Active	10.5.8.2	8000	10.5.8.254	V5.4.5build 1701...	80	DS-2CD2142FWD-
<input type="checkbox"/>	025	STORAGE-SERVER	Active	10.5.8.252	8000		V1.2.1build 1703...	N/A	DS-NVR-V12082C
<input type="checkbox"/>	026	DS-2CD2722WD-I3	Active	10.5.8.33	8000	192.168.1.1	V5.4.5build 1701...	80	DS-2CD2722WD-I
<input type="checkbox"/>	027	DS-KD8102-V	Active	10.5.8.160	8000	10.5.8.254	V1.4.71build 170...	80	DS-KD8102-V012C
<input type="checkbox"/>	028	IDS-2CD6810F/C	Active	10.5.8.101	8000	10.5.8.254	V5.4.6build 1705...	80	IDS-2CD6810F/C2I
<input type="checkbox"/>	029	DS-2DF7286-A	Active	10.5.8.107	8000	10.5.8.254	V5.4.26build 170...	80	DS-2DF7286-A201
<input type="checkbox"/>	030	DS-2CD2D14WD/M	Active	10.5.8.5	8000	10.5.8.254	V5.4.5build 1612...	80	DS-2CD2D14WD/I
<input type="checkbox"/>	031	DS-KV8102-IM	Active	10.5.8.171	8000	10.5.8.254	V1.4.70build 170...	80	DS-KV8102-IM012
<input type="checkbox"/>	032	DS-2CD4816FWD-IZS	Active	10.5.8.46	8000	10.5.8.254	V5.4.5build 1702...	80	DS-2CD4816FWD-
<input type="checkbox"/>	033	DS-2CD2722F-IS	Active	10.5.8.6	8000	10.5.8.254	V5.4.5build 1704...	80	DS-2CD2722F-IS
<input type="checkbox"/>	034	DS-2CD6520D-IO	Active	10.5.8.40	8000	10.5.8.254	V5.3.2build 1505...	80	DS-2CD6520D-IO
<input checked="" type="checkbox"/>	035	DS-A	Active	192.168.0.101	8000	192.168.0.1	Storos-V9.1.5_10...	N/A	651772114
<input checked="" type="checkbox"/>	036	DS-A	Active	192.168.0.100	8000	192.168.0.1	Storos-V9.1.5_10...	N/A	651772114
<input type="checkbox"/>	037	DS-A	Active	10.5.8.224	8000	10.5.8.254	Storos-V9.1.5_10...	N/A	557792865

Modify Network Parameters

Enable DHCP

Device Serial No.: 651772114

IP Address: 10.5.8.221

Port: 8000

Subnet Mask: 255.255.255.0

Gateway: 10.5.8.254

IPv6 Address: 0:0:0:0:0:0:0:0

IPv6 Gateway: 0:0:0:0:0:0:0:0

IPv6 Prefix Length: 64

HTTP Port: 0

Security Verification:

Admin Password: [password]

Modify

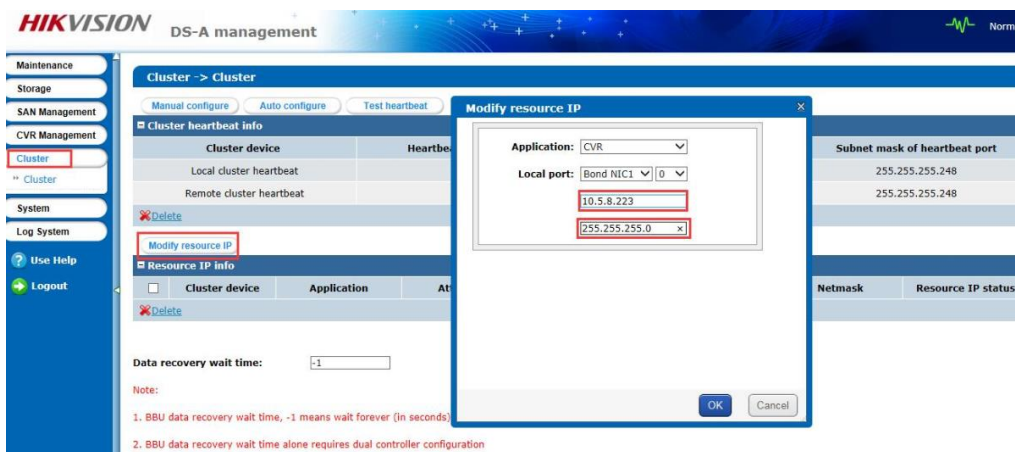
Forgot Password

3. Login the web of storage device by controller IP address. The ip address format is [https:IP:2004](https://IP:2004),

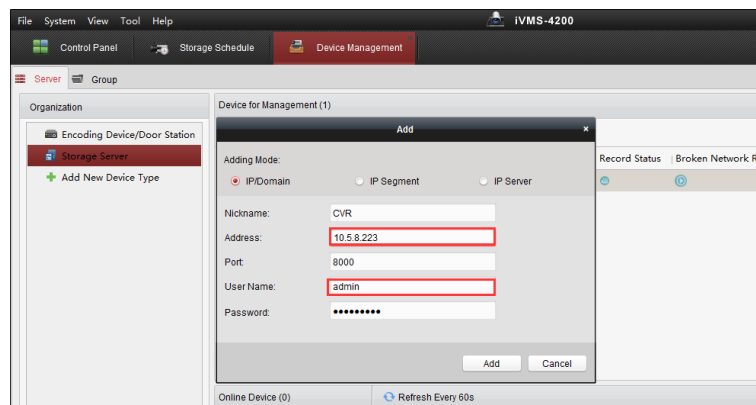


4. Click the cluster button after you login web, and click Modify resource IP button and then access into Modify resource IP interface. And set resource IP for this dual controller device.

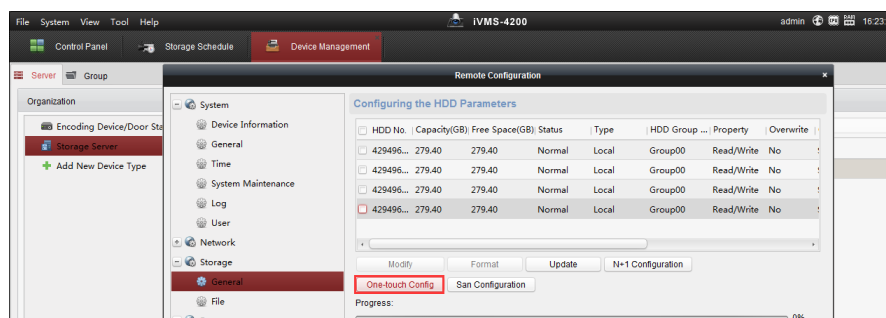
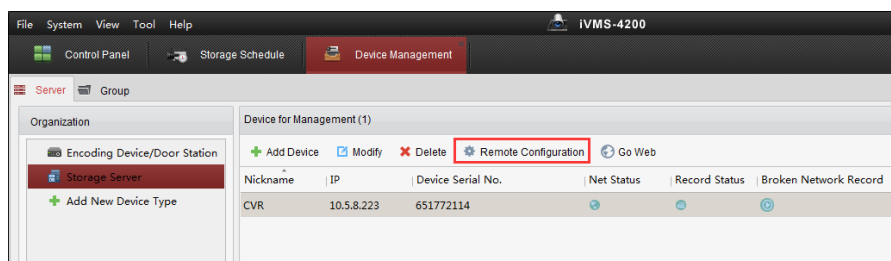
Note: the dual controller device has three different IP address. Each controller device different IP, and it also need to configure resource IP, configure recording service or add storage device into VMS based on resource IP address.



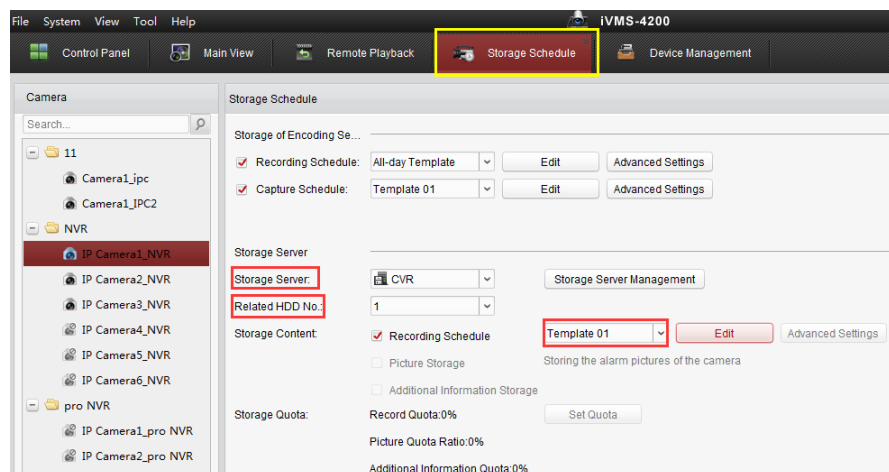
5. Add **resource IP address** into IVMS-4200 in device management interface. The device type belongs to **storage server**. You need to input IP address, user name and password.

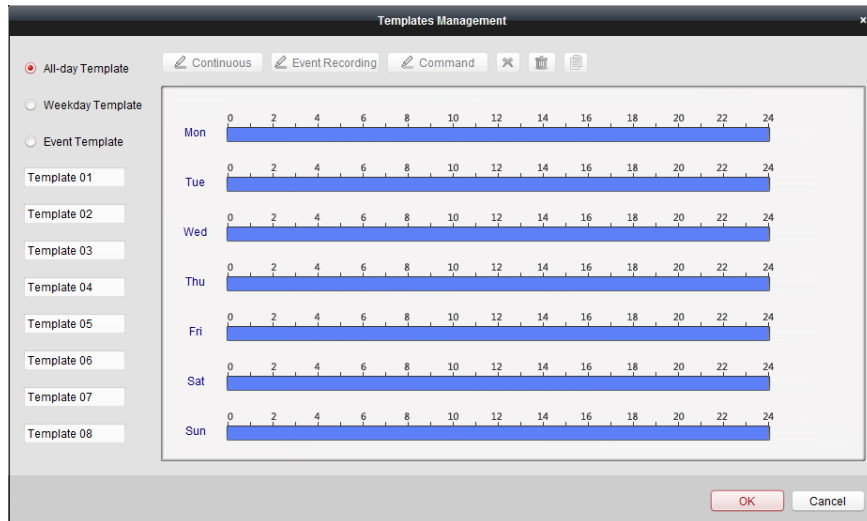


6. Click **Remote Configuration**, And you will enter configuration interface. In the storage interface, Click **General**, and just click **One-touch Config** which will start to automatically configure CVR service.



7. After one-touch configuration, you can start to make recording schedule in **storage schedule** interface. Choose the camera in left bar which you want to make recording schedule. And then choose **storage server** and **related HDD**. Finally, make a recording schedule for this camera.





First Choice for Security Professionals

HIKVISION Technical Support