



iVMS-4200 V3.8.1

Release Notes

Legal Information

© 2022 Hangzhou Hikvision Digital Technology Co., Ltd. All rights reserved.

This Document (hereinafter referred to be “the Document”) is the property of Hangzhou Hikvision Digital Technology Co., Ltd. or its affiliates (hereinafter referred to as “Hikvision”), and it cannot be reproduced, changed, translated, or distributed, partially or wholly, by any means, without the prior written permission of Hikvision. Unless otherwise expressly stated herein, Hikvision does not make any warranties, guarantees or representations, express or implied, regarding to the Document, any information contained herein.

About this Document

Pictures, charts, images and all other information hereinafter are for description and explanation only. The information contained in the Document is subject to change, without notice, due to updates or other reasons.

Please use this Document with the guidance and assistance of professionals trained in supporting the Product.

LEGAL DISCLAIMER

TO THE MAXIMUM EXTENT PERMITTED BY APPLICABLE LAW, THE DOCUMENT IS PROVIDED "AS IS" AND "WITH ALL FAULTS AND ERRORS". HIKVISION MAKES NO REPRESENTATIONS OR WARRANTIES, EXPRESS OR IMPLIED, INCLUDING BUT NOT LIMITED TO, WARRANTIES OF MERCHANTABILITY, FITNESS FOR A PARTICULAR PURPOSE OR NON-INFRINGEMENT. IN NO EVENT WILL HIKVISION BE LIABLE FOR ANY SPECIAL, CONSEQUENTIAL, INCIDENTAL, OR INDIRECT DAMAGES INCLUDING, AMONG OTHERS, DAMAGES FOR LOSS OF BUSINESS PROFITS, BUSINESS INTERRUPTION, OR LOSS OF DATA, CORRUPTION OF SYSTEMS, OR LOSS OF DOCUMENTATION, WHETHER BASED ON BREACH OF CONTRACT, TORT (INCLUDING NEGLIGENCE), OR OTHERWISE, IN CONNECTION WITH THE USE OF THE DOCUMENT, EVEN IF HIKVISION HAS BEEN ADVISED OF THE POSSIBILITY OF SUCH DAMAGES OR LOSS.

TABLE OF CONTENTS

Chapter 1 Introduction	1
1.1 Overview	1
1.2 Version	1
1.3 Components	1
Chapter 2 What's New	2
2.1 Device Management	2
2.1.1 Updated Features	2
2.2 Event Center	2
2.2.1 Updated Features	2
2.3 Person Management	3
2.3.1 Updated Features	3
2.4 Access Control	4
2.4.1 Updated Features	4
2.5 Time and Attendance	4
2.5.1 Added Features	4
Chapter 3 Resolved Issues	5

Chapter 1 Introduction

1.1 Overview

iVMS-4200 Client software is designed to configure and manage Hikvision devices in a unified and intuitive manner, including DVRs, NVRs, IP cameras, encoders, decoders, security control panels, video intercom devices, access control devices, etc.

The software provides multiple functionalities including live view, video recording, remote search and playback, file backup, alarm receiving, person management, access control, video intercom, security control, time & attendance, etc.

1.2 Version

Version	Date
iVMS-4200 V3.8.1	2022-09

1.3 Components

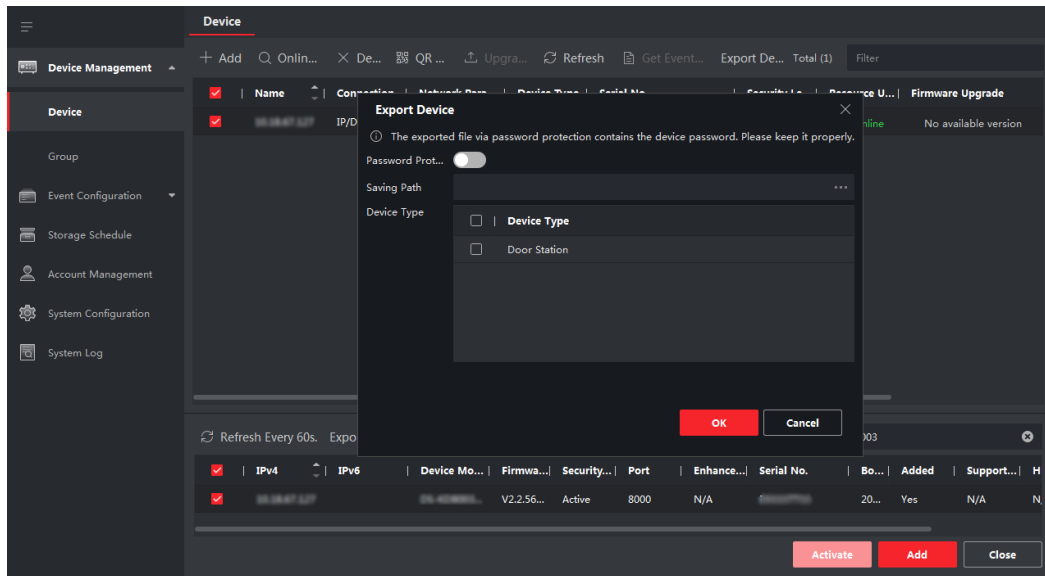
Component	Version	Date of Release	Latest Version or Not
Player	V7.4.0.62	2022-08-25	No
Network SDK	V6.1.9.45	2022-09-02	Yes
ISUP SDK	V2.5.0.35	2021-10-13	No

Chapter 2 What's New

2.1 Device Management

2.1.1 Updated Features

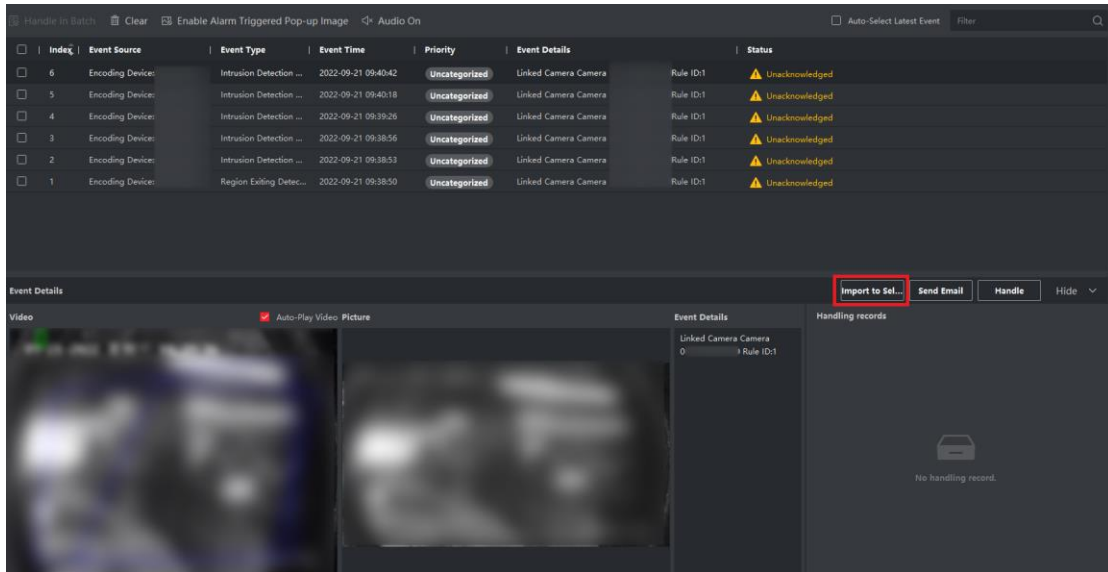
Supports encrypting the exported file of device information.



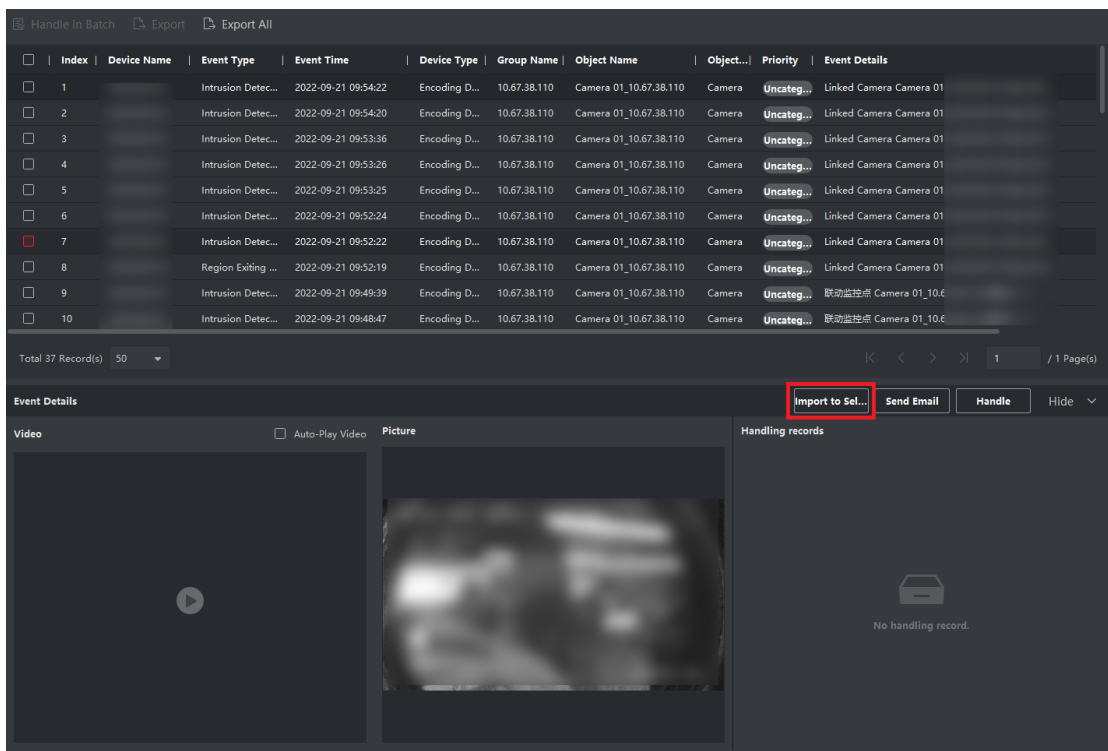
2.2 Event Center

2.2.1 Updated Features

1. Supports importing false alarm pictures and target frame information to self-learning library for line crossing detection and intrusion detection when viewing real-time events. Similar targets would not trigger false alarms thereafter.



- Supports importing false alarm pictures and target frame information to self-learning library for line crossing detection and intrusion detection when searching for historical events. Similar targets would not trigger false alarms thereafter.



2.3 Person Management

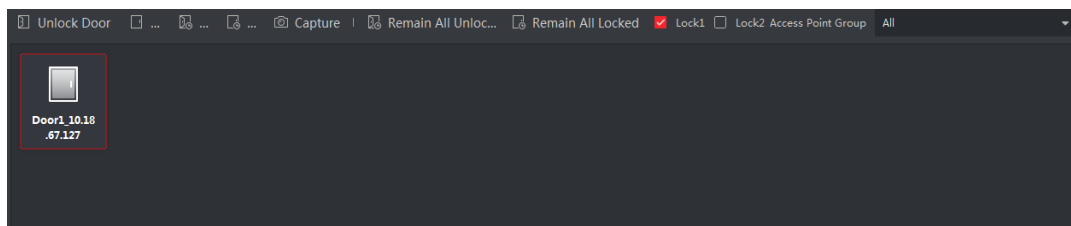
2.3.1 Updated Features

By default, person ID is the new ID instead of the deleted ID.

2.4 Access Control

2.4.1 Updated Features

1. Added QR code events linked to card reader in linkage configuration.
2. Supports clearing all authentication codes.
3. Supports remotely unlocking for door station via Lock1 or Lock2.



2.5 Time and Attendance

2.5.1 Added Features

Supports judging whether attendance check points have been configured when synchronizing data to a third-party database.

Chapter 3 Resolved Issues

The following are issues resolved in this version.

1. The Client does not display the button of digital two-way audio channel when a device supports digital two-way audio channel.
2. Failed to save the hot spot location on the E-map.
3. For the Ukrainian version Client, names in the third-party database appear garbled after synchronizing the attendance data to the third-party database.
4. Failed to get the face information when the 3.8.0.4 version Client collects the person data from the enrollment station.
5. The iris data of persons on the Client is lost after importing face pictures in a batch.
6. Failed to apply visitors' face pictures.
7. Failed to import persons via Excel in batch when there is a "." before @ in the email address.
8. The speed dome automatically returns to the preset too quickly because the default waiting time for one-touch park is 5 seconds.

