

Network Camera Firmware Revision: V5.4.2 build160831 Release Note (2016-9-20)

Firmware Basic Information	Firmware Revision:	V5.4.2 build160831
	Play Library (PlayCtrl.dll)	V7.3.1.61
	Encapsulation Library (SystemTransform.dll)	V2.5.1.9
	RTSP Communication Library (StreamTransClient.dll)	V1.1.3.6
	Voice intercom library (AudioIntercom.dll)	V1.3.0.5
	iVMS-4200	V2.5.2.6 build160823

Hikvision Firmware V5.4.2 build160831 Features

1. New Features

- Newly support model: DS-2CD4A26FWD (8-32mm).
- Update the FF algorithm library and newly support the license plate of Montenegro, Italy and Slovakia.
- Support different resolution selections for LPR detection, which keeps consistent with main stream.
- For DS-2CD4X26, it newly supports the recording function in the live view browser.
- Support detecting the polygonal area.
- Newly added the mode of "Alarm Input" in the License Plate Settings to trigger the license plate recognition and capture.

License Plate Settings

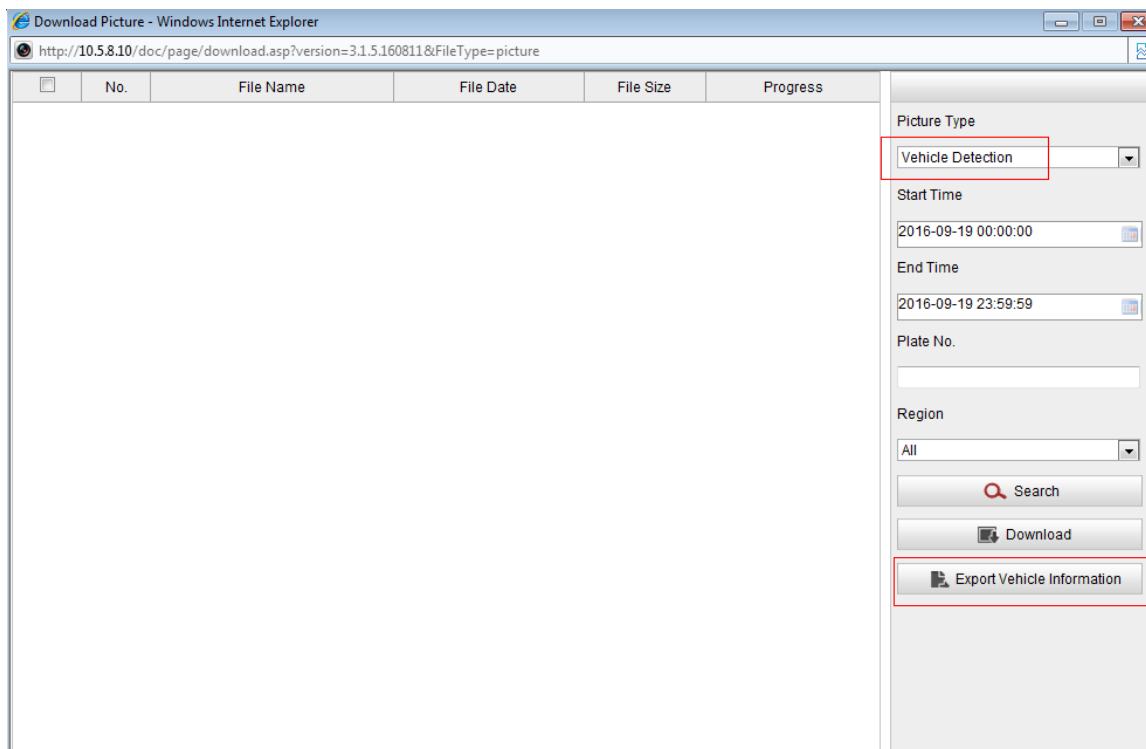
License Plate Width Min. Max.

Select Mode

- Entrance/Exit
- City Street
- Custom
- Alarm Input

Arming Sched

- **5200 will trigger the LPR library to capture the license plate and upload the result by SDK.**
- **Support to export vehicle information including License Plate Number, Capture Time, Country, Lane, Direction and Validity with excel format in the live view browser.**



- **Newly support direction recognition , which can be overlaid in the live view.**

Text Overlay

Camera No. Camera Info. Device No. Capture Time Plate No.

Direction

Type
Direction

2. Optimizations

- **Optimize display of real-time vehicle information. Country information can be hidden in the real-time display interface.**

Detection Configuration | Picture | Camera | **Real-time LPR Result** | Blacklist & Whitelist

Enable Real-time LPR Result

Country

09-19-2016 Mon 18:25:54

Camera 01

No.	Capture Time	Plate No.	Captured Picture	Country	Lane	Direction
-----	--------------	-----------	------------------	---------	------	-----------

- **Modify the issue about uploading incorrect validity value to the third platform.**
- **The issue that 5200 gateway controls SDK command without response has been modified.**
- **The maximum input license plate character length in the picture research interface has been modified from 7 to 16, including number, upper and lower case letters.**

Compatibility Update

- **NUUO:**
 1. Version: V6.3.0, drive version: V4.15
- **Milestone:**
 1. Milestone Enterprise 8.1a(10.1a), Milestone Corporate 10.1a
 2. Milestone drive version : Device Pack 8.6
- **Avigilon:**
 1. Version: V5.8.4.16
- **Excaqvision:**
 1. Version: 7.8.2.98464
- **Genetec:**
 1. Version: 4.8 SR8
- **Security Center:**
 1. Version: 5.5 SR1

Customer Impact and Recommended Action

This update refers to function/compatibility improvement and will take effect automatically after the Date of Change. We are very sorry for any inconvenience of use-habit changes caused by this action. For any questions and request for this firmware, please contact our local technical support team.

Remarks:

- Hikvision reserves the right to change, alter or withdraw the above notification without prior notice.
- Product design and specifications are subject to change without prior notice.
- The Hikvision firmware may contain defects or errors known as errata which may cause the product to deviate from published specifications. Current characterized errata are available on request.
- Hikvision is not liable for any typing or printing errors.

Hikvision Digital Technology CO., Ltd.
No. 555 Qianmo Road, Binjiang District, Hangzhou 310051, China
Tel: +86-571-8807-5998
FAX: +86-571-8993-5635
Email: overseabusiness@hikvision.com

Supported Product List (4X25, 4X26)		
Product Category	Model Number	Product Description
Box Camera	DS-2CD4025FWD	2MP, 60fps, WDR
Box Camera	DS-2CD4025FWD-A	2MP, WDR, ABF optional
Box Camera	DS-2CD4025FWD-AP	2MP, ABF optional, P-Iris optional
IR Bullet	DS-2CD4625FWD-IZS(2.8-12mm)	2MP, 60fps, WDR
IR Bullet	DS-2CD4626FWD-IZHS(2.8-12mm)	2MP, 60fps, WDR
IR Bullet	DS-2CD4626FWD-IZS(2.8-12mm)	2MP, 60fps, WDR
IR Bullet	DS-2CD4A25FWD-IZS(2.8-12mm)	2MP, 60fps, WDR
IR Bullet	DS-2CD4A25FWD-IZS(8-32mm)	2MP, 60fps, WDR
IR Bullet	DS-2CD4A25FWD-IZHS(2.8-12mm)	2MP, 60fps, WDR
IR Bullet	DS-2CD4A25FWD-IZHS(8-32mm)	2MP, 60fps, WDR
Box Camera	DS-2CD4026FWD	2MP, WDR
Box Camera	DS-2CD4026FWD-A	2MP, WDR, ABF optional
Box Camera	DS-2CD4026FWD-AP	2MP, ABF optional, P-Iris optional
IR Bullet	DS-2CD4A26FWD-IZS(2.8-12mm)	2MP, WDR, Motorized VF lens optional
IR Bullet	DS-2CD4A26FWD-IZHS(2.8-12mm)	2MP, Motorized VF lens optional, Heater optional
IR Bullet	DS-2CD4A26FWD-IZS(8-32mm)	2MP, WDR, Motorized VF lens optional
IR Bullet	DS-2CD4A26FWD-IZHS(8-32mm)	2MP, Motorized VF lens optional, Heater optional