

Title:	DS-K1T501 work as wiegand reader	Version:	v1.0	Date:	10/31/2018
Product:	DS-K1T501			Page:	1 of 3

DS-K1T501 work as wiegand reader

Device Info:

K1T501SF firmware version: V1.1.0_build180202

K2604 firmware version: V2.0.4_build180913

Step1: Set dip switch for K1T501SF(instruction available on User manual)

Appendix B DIP Switch Introduction

The DIP switch diagram is as follows:

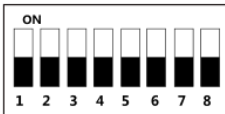


Table 7-2 Description of DIP Switch

Icon	Description
	Represent 1 in binary mode
	Represent 0 in binary mode

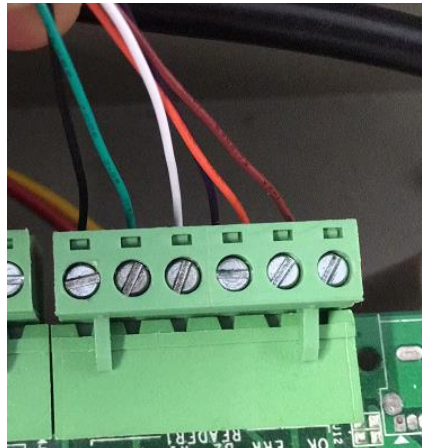
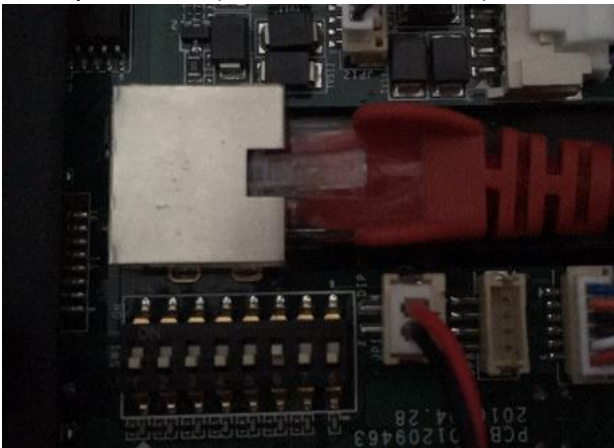
For example, binary value of the following status is: 0000 1100.



Table 7-3 Description of DIP Switch

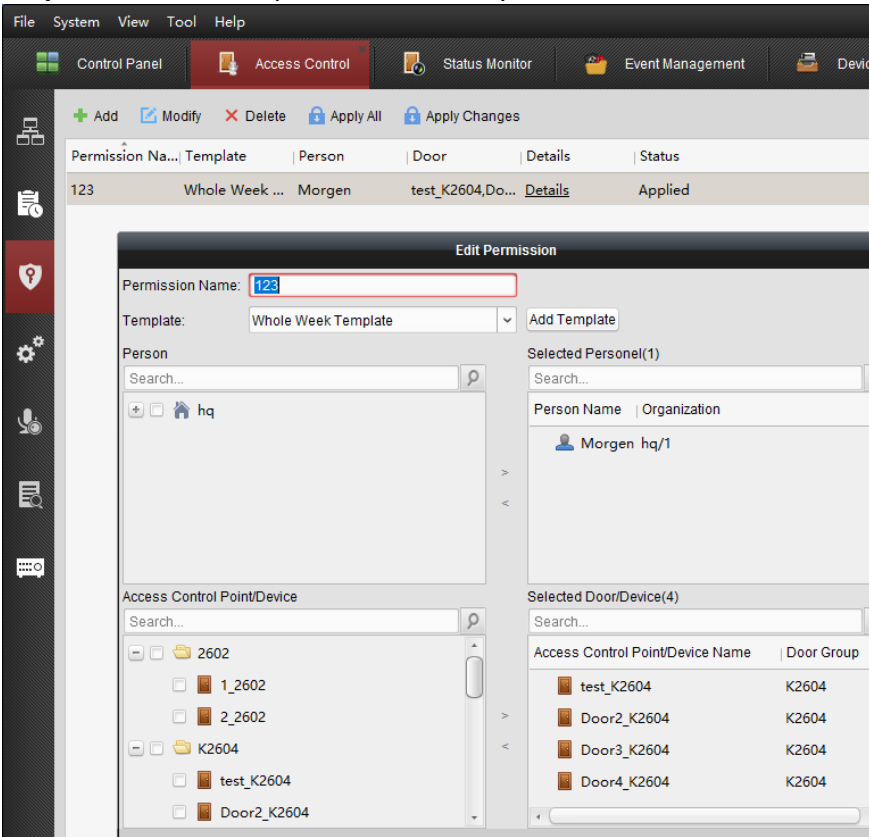
No.	Description	DIP Switch Status
1 ~ 4	Address of RS-485	2: Security Module 0: Card Reader
5	RS-485 Direction under the Terminal Mode	1: Upstream; 0: Down Stream
6	Working Method	1: Card Reader; 0: Terminal.
7	Wiegand Protocol (available when No. 6 is 1)	1: Wiegand protocol of 26-bit; 0: Wiegand protocol of 34-bit.
8	Matched Resistance (available for RS-485 protocol)	1: Enable; 0: Disable.

For example, if K1T501SF use as wiegand reader1(control K2604 lock1 entrance), follow front picture Set dip switch 6 (work as card reader) as ON status. Connect device to controller via wiegand(W0,W1,GND)

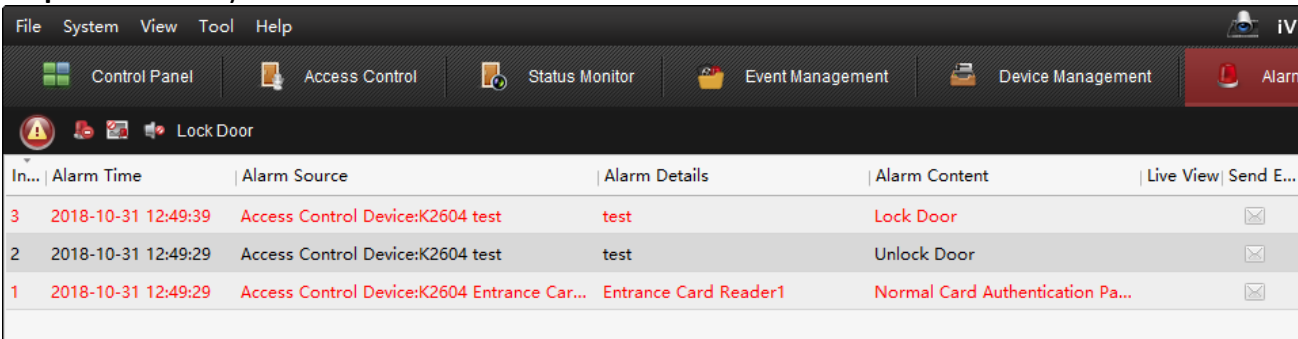


Title:	DS-K1T501 work as wiegand reader	Version:	v1.0	Date:	10/31/2018
Product:	DS-K1T501			Page:	2 of 3

Step2: Add card and person info and sync to K2604 access controller.



Step3: Test. Verify card on K1T501SF and check event from ivms-4200 software



Note:

1. If only connect wiegand cable W0, W1 and GND, when swiping card on K1T501, it will not give any prompt when verify failed or successfully, if all cables(W0, W1, GND, BUZ, OK and ERR) are connected, device will give 2 beeps when verify successfully, 3 beeps when verify failed.
2. When work in reader mode, device will not upload event to ivms4200 software.



Title:	DS-K1T501 work as wiegand reader	Version:	v1.0	Date:	10/31/2018
Product:	DS-K1T501			Page:	3 of 3

First Choice for Security Professionals
HIKVISION Technical Support