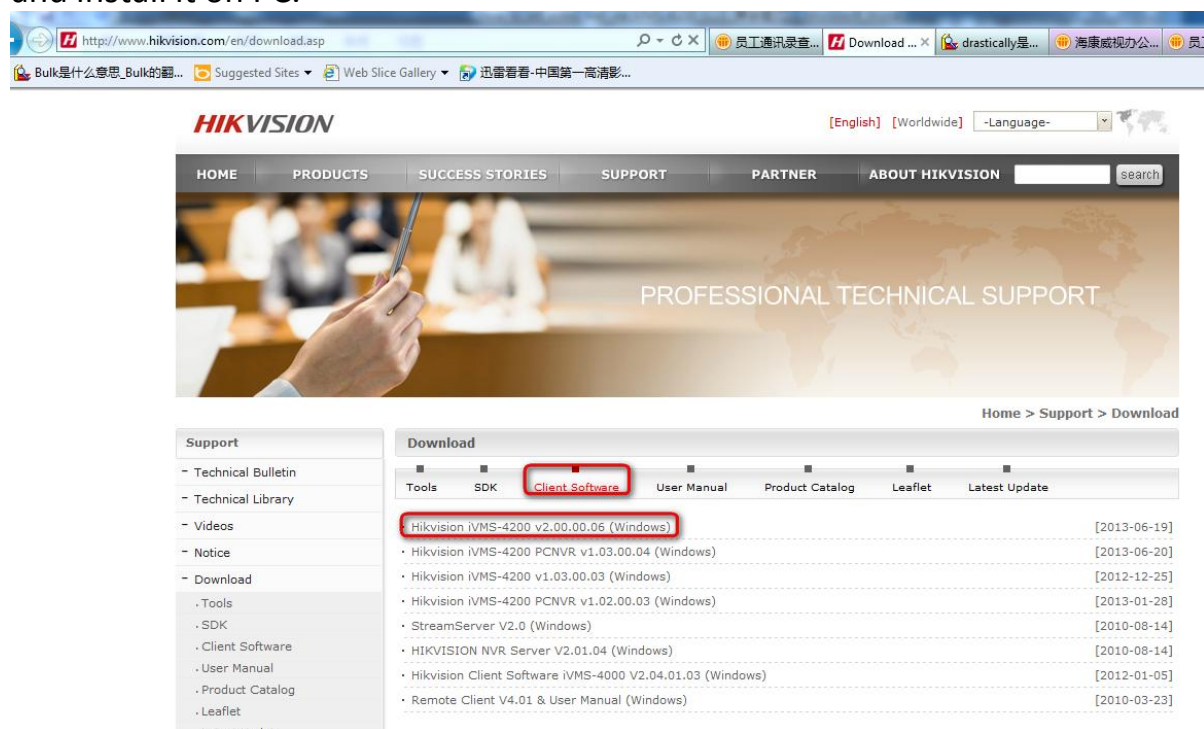


How to set video wall via iVMS-4200 V2.0 and decoder video by sub-stream

Preparations:

Download iVMS-4200 V2.0 software on <http://www.hikvision.com/en/download.asp> and install it on PC.



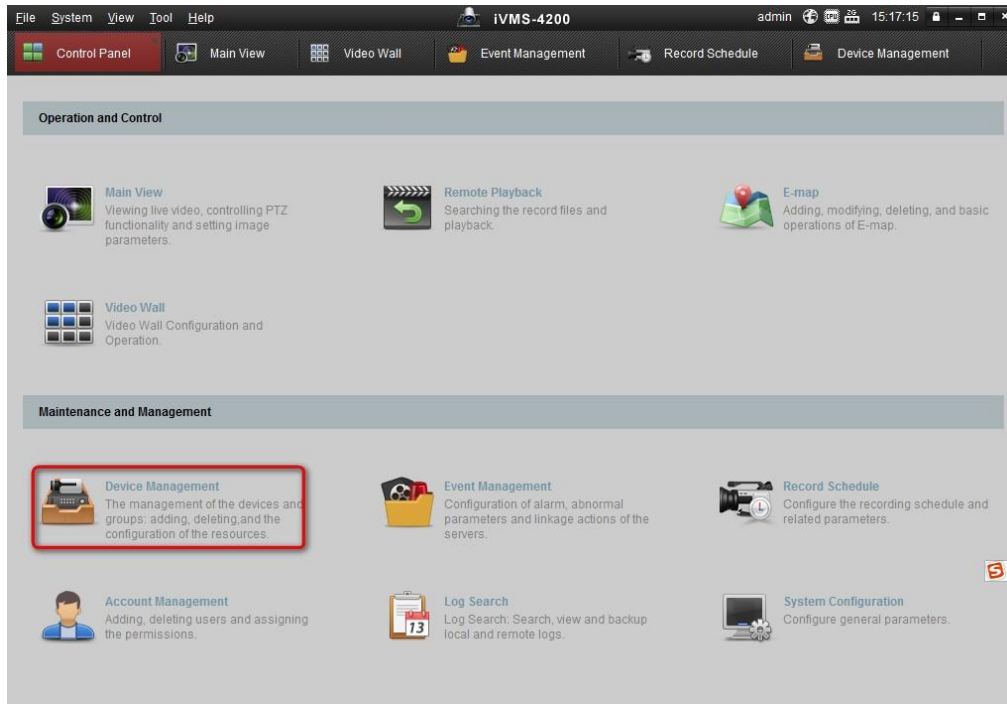
The screenshot shows the Hikvision website's download page. The browser address bar displays <http://www.hikvision.com/en/download.asp>. The website header includes the Hikvision logo, language options ([English], [Worldwide]), and a search bar. The main navigation menu contains links for HOME, PRODUCTS, SUCCESS STORIES, SUPPORT, PARTNER, and ABOUT HIKVISION. A banner image shows a hand holding a smartphone with the text "PROFESSIONAL TECHNICAL SUPPORT". Below the banner, the breadcrumb trail reads "Home > Support > Download".

The "Download" section features a sub-menu with "Tools", "SDK", "Client Software", "User Manual", "Product Catalog", "Leaflet", and "Latest Update". The "Client Software" option is highlighted with a red box. Below this, a list of software versions is displayed, with the first entry, "Hikvision iVMS-4200 v2.00.00.05 (Windows)", also highlighted with a red box. The list includes the following items:

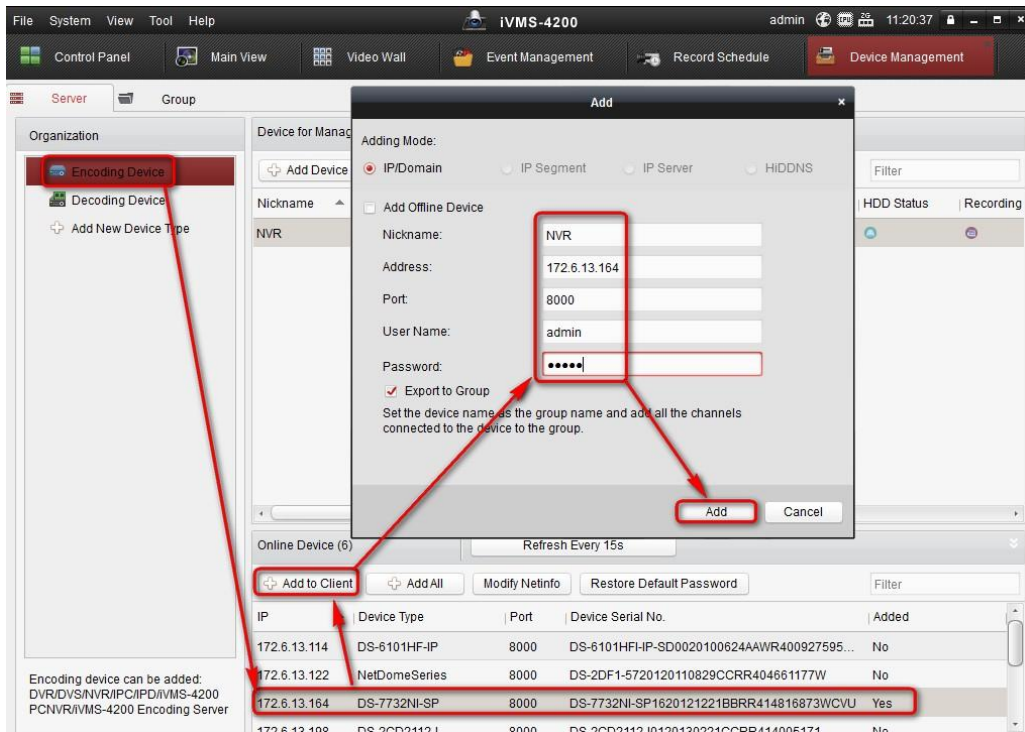
Software Name	Release Date
Hikvision iVMS-4200 v2.00.00.05 (Windows)	[2013-06-19]
Hikvision iVMS-4200 PCNVR v1.03.00.04 (Windows)	[2013-06-20]
Hikvision iVMS-4200 v1.03.00.03 (Windows)	[2012-12-25]
Hikvision iVMS-4200 PCNVR v1.02.00.03 (Windows)	[2013-01-28]
StreamServer V2.0 (Windows)	[2010-08-14]
HIKVISION NVR Server V2.01.04 (Windows)	[2010-08-14]
Hikvision Client Software iVMS-4000 V2.04.01.03 (Windows)	[2012-01-05]
Remote Client V4.01 & User Manual (Windows)	[2010-03-23]

Part 1 How to set video wall

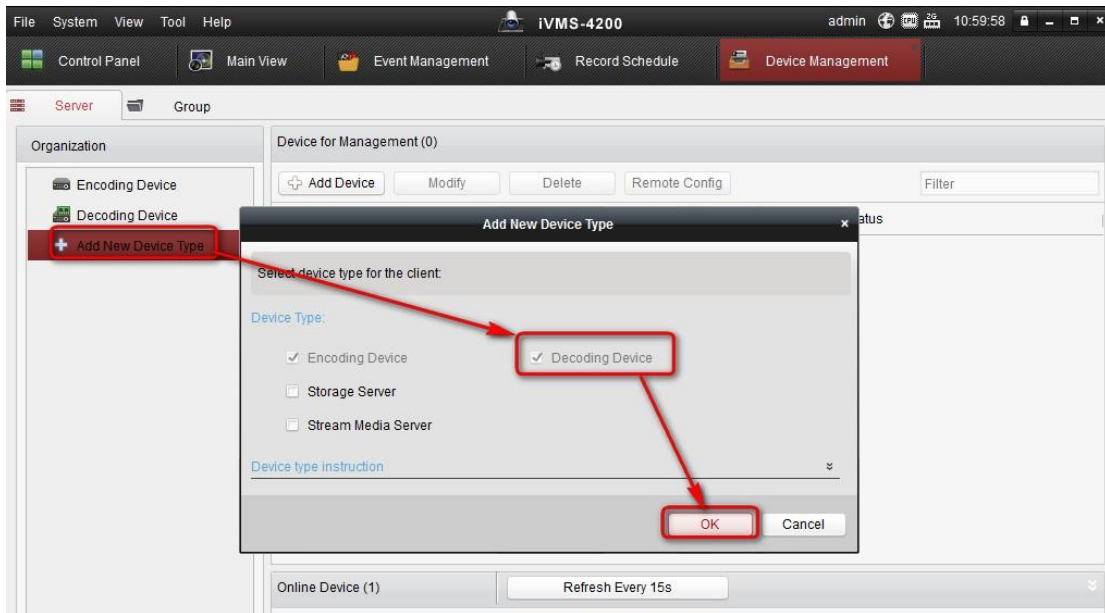
Step 1: Run **iVMS-4200 V2.0** client software and then switch to **Device Management**



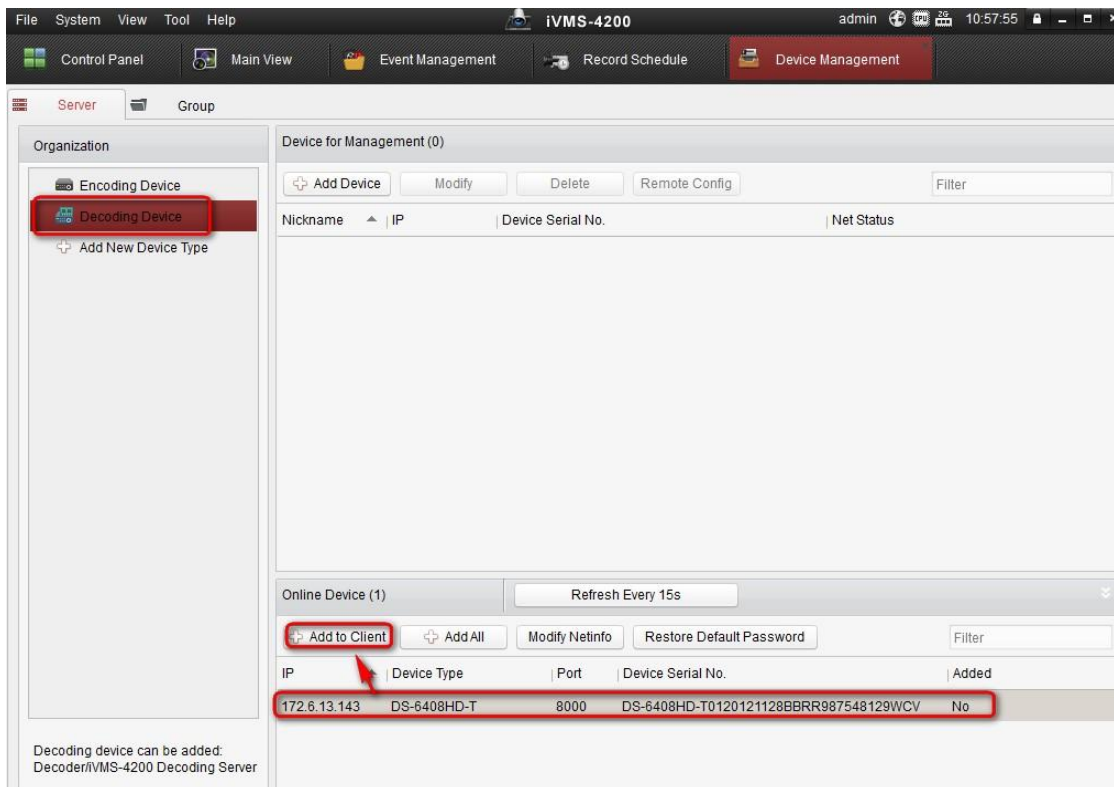
Step 2: Click **Encoding device**, select the NVR in **Online device** and then click **Add to client** to add the NVR.

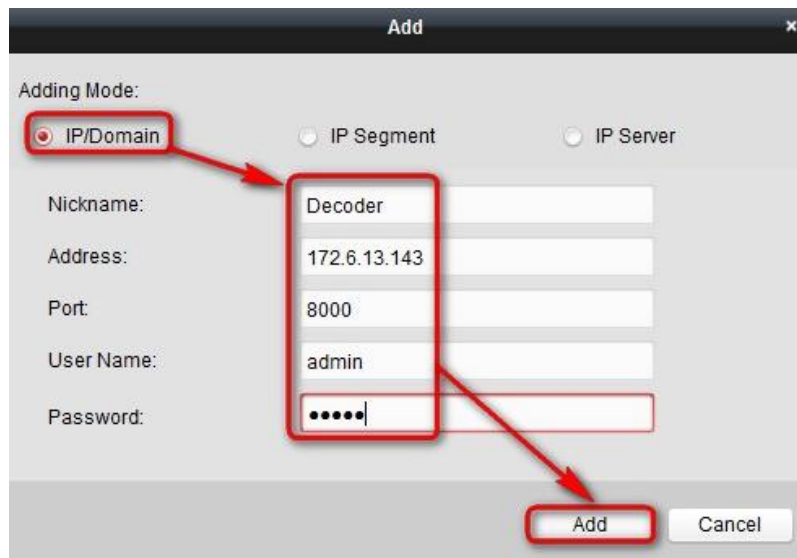


Step 3: Click **Add New Device Type** and then enable the **Decoding Device**.

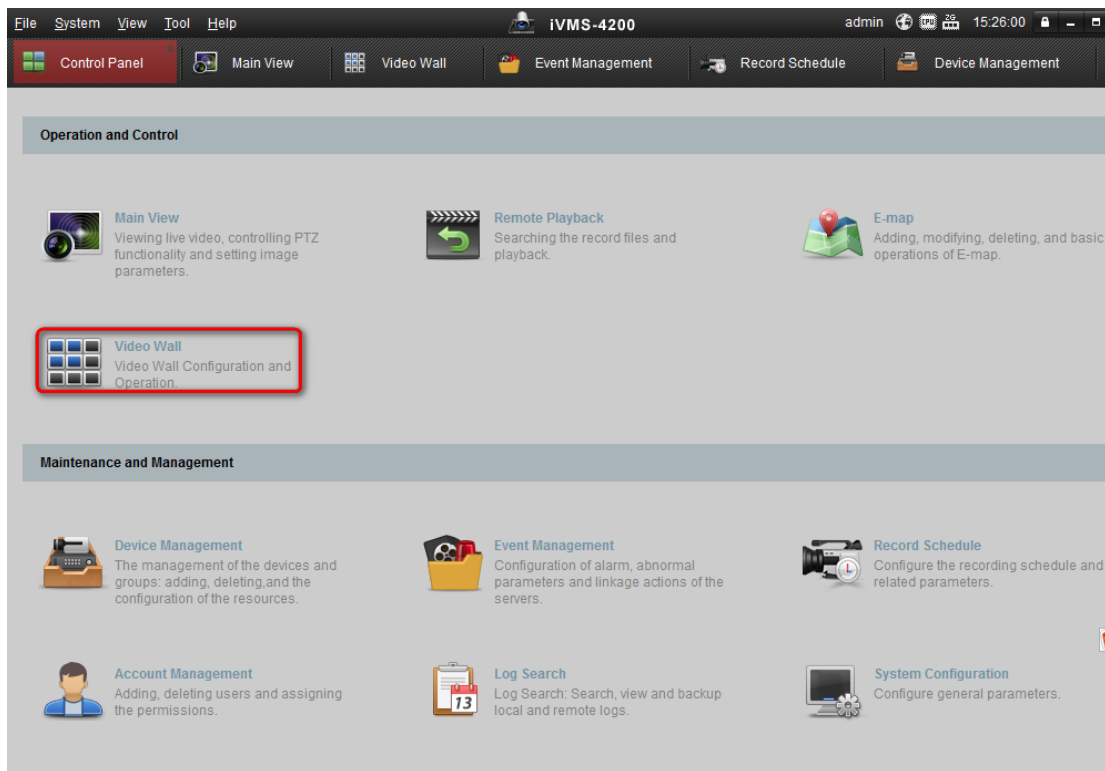


Step 4: Click **Decoding Device**, select the decoder and click **Add to client** to add it.

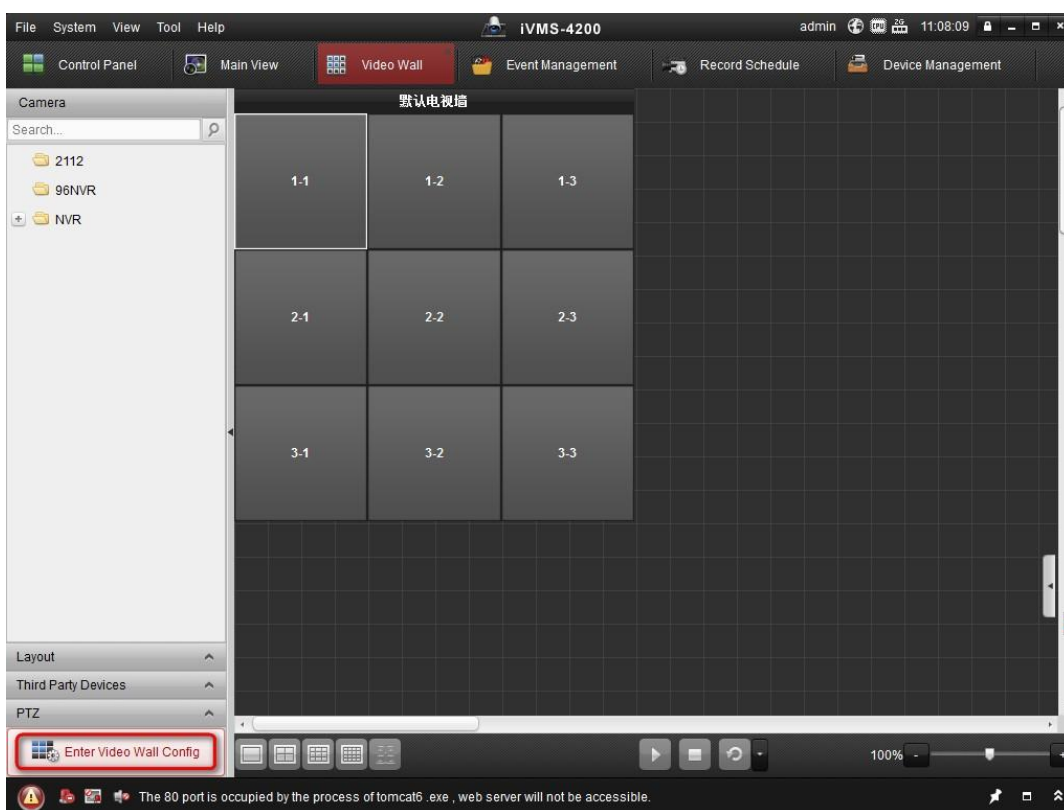





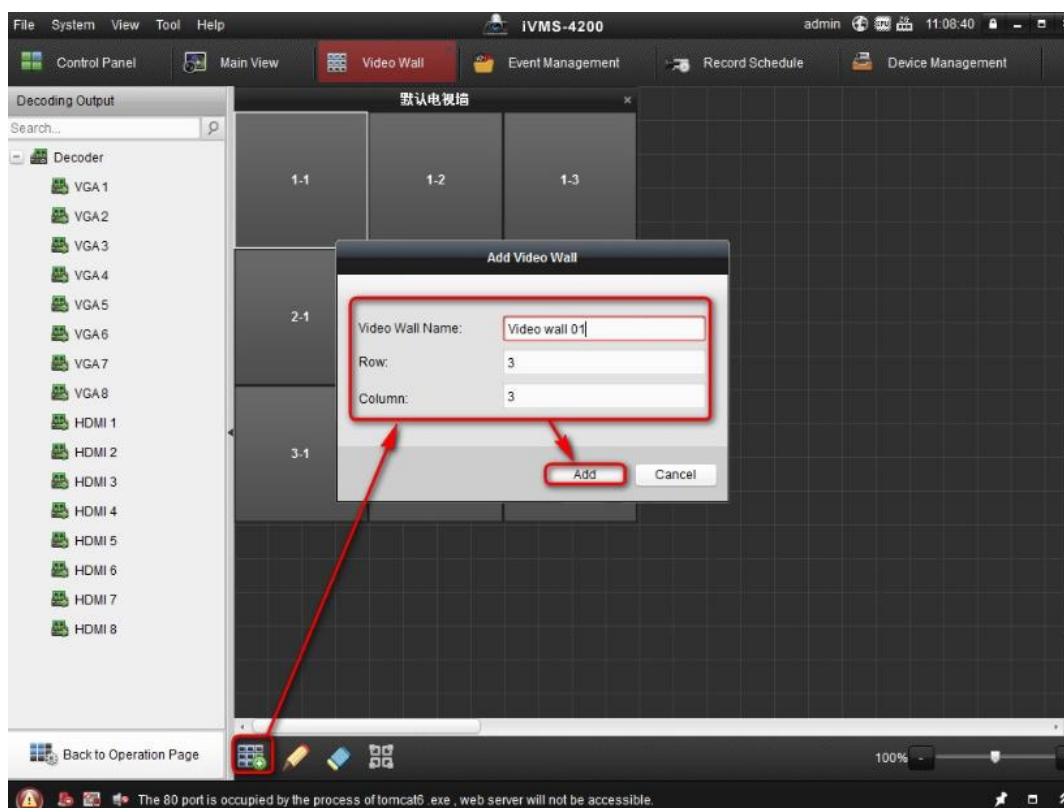
Step 5: Click **Video Wall** in **Control panel**.



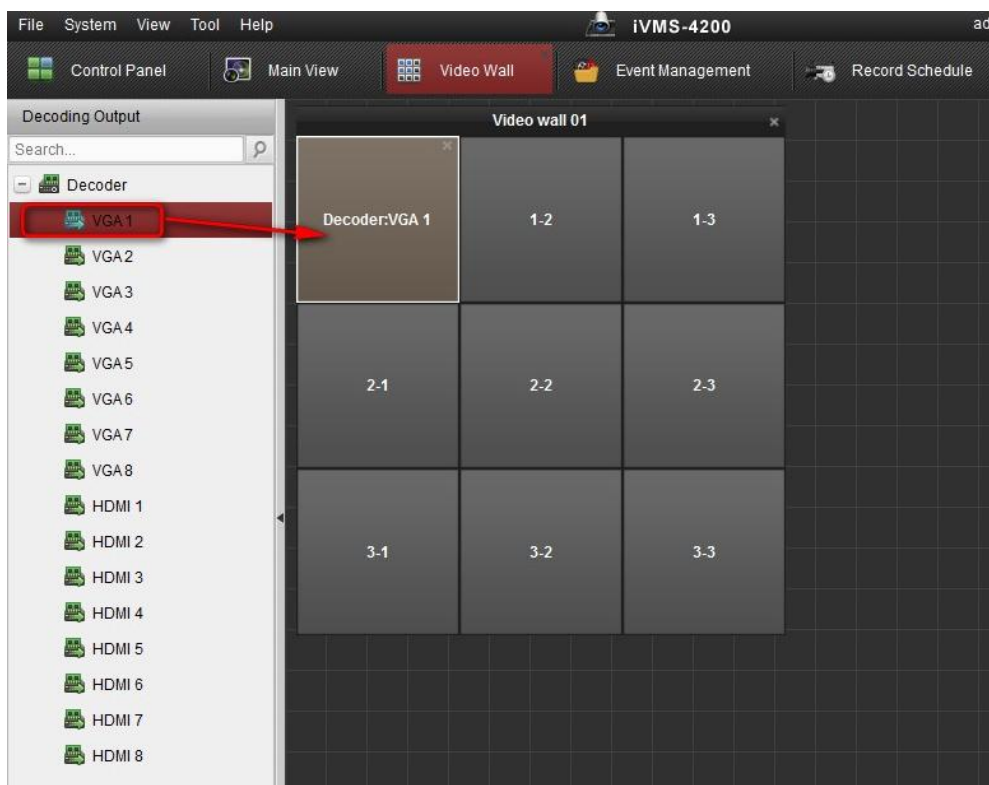
Step 6: Click **Enter Video Wall Config.**



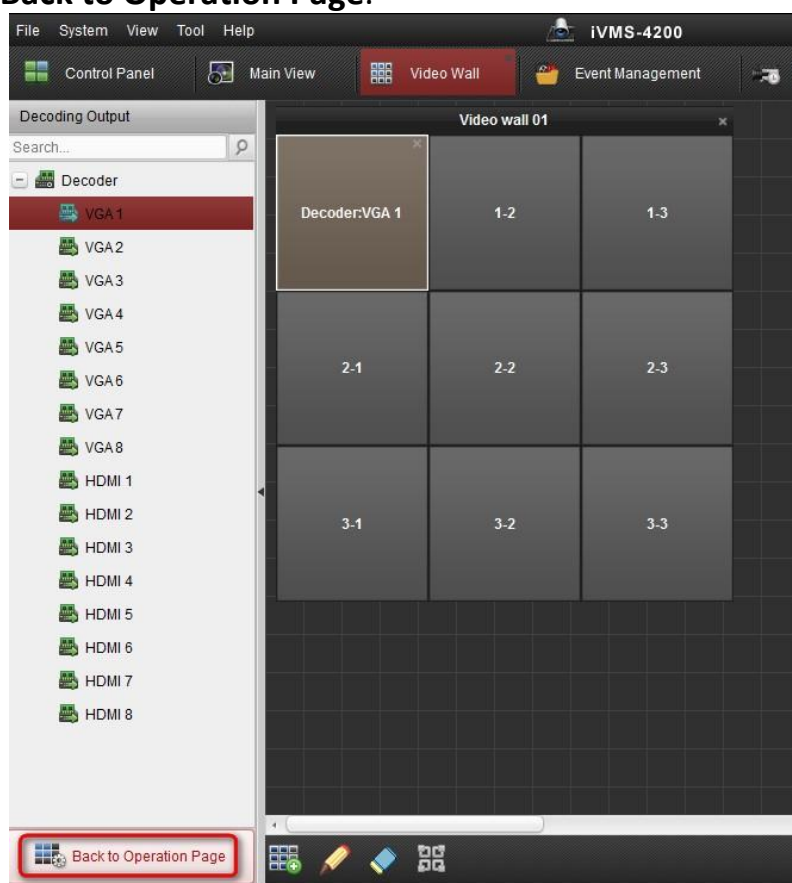
Step 7: Click  to add video wall, and then type in **Name**, **Row** and **Column**.



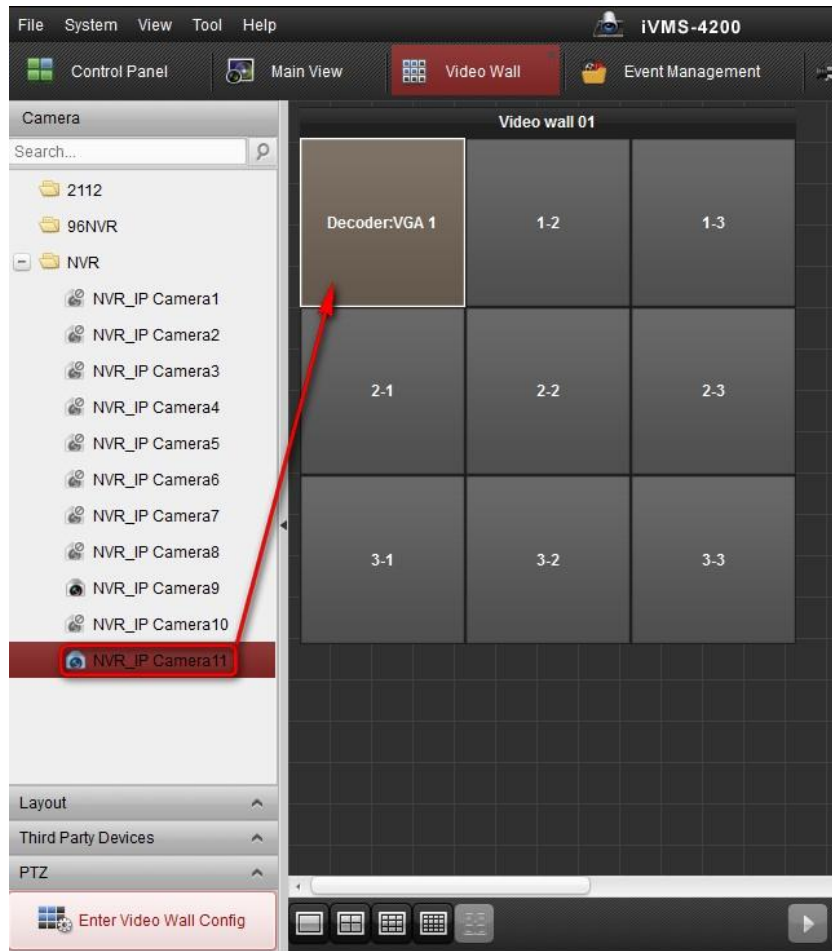
Step 8: Drag the video output of decoder to the video wall. (Such as VGA1)




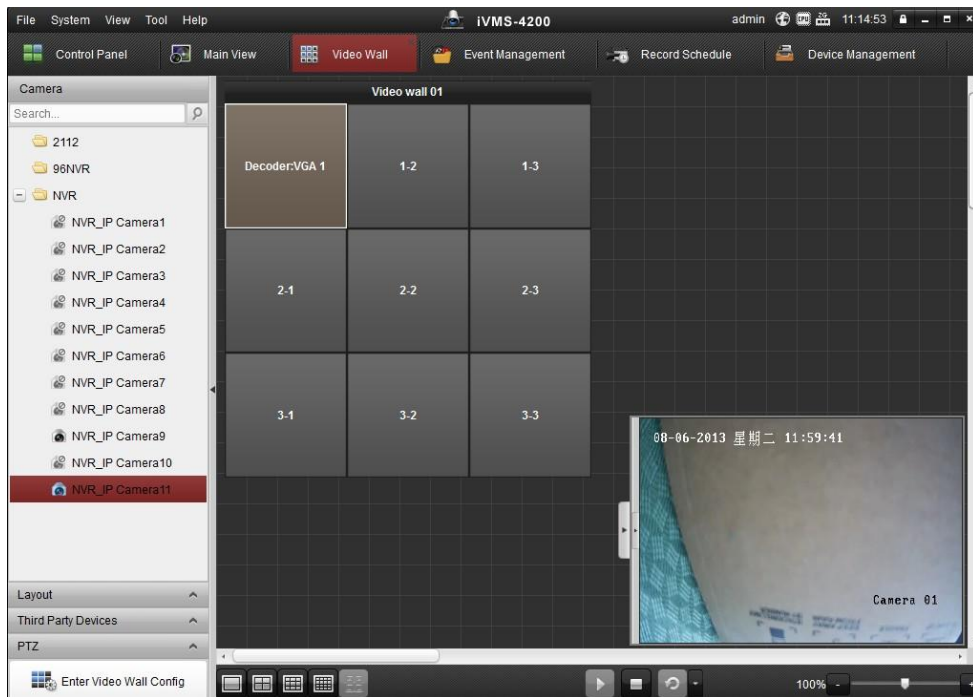
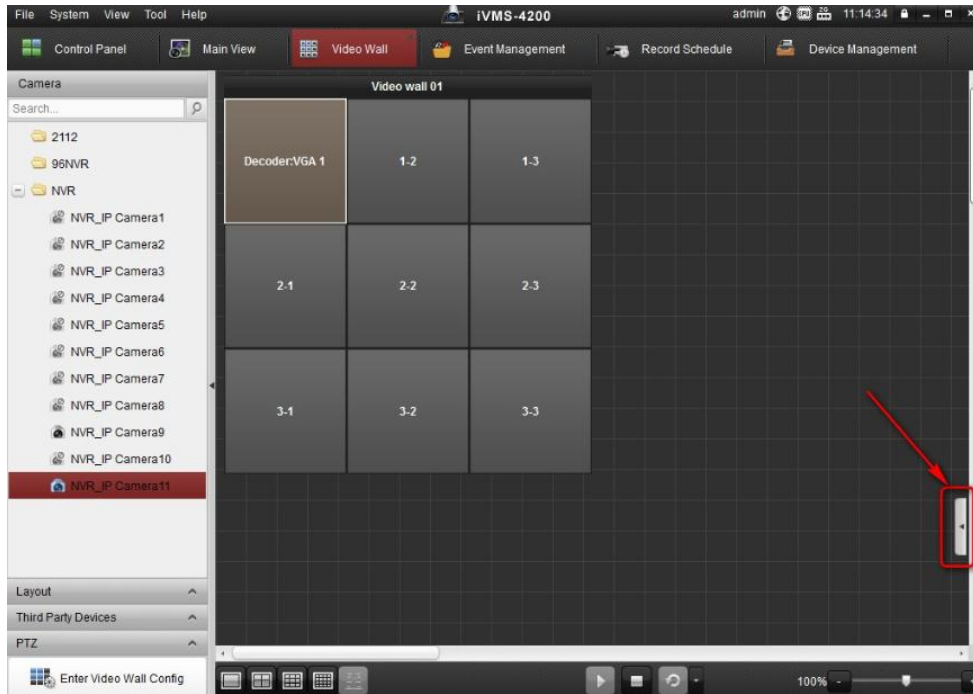
Step 9: Click **Back to Operation Page**.




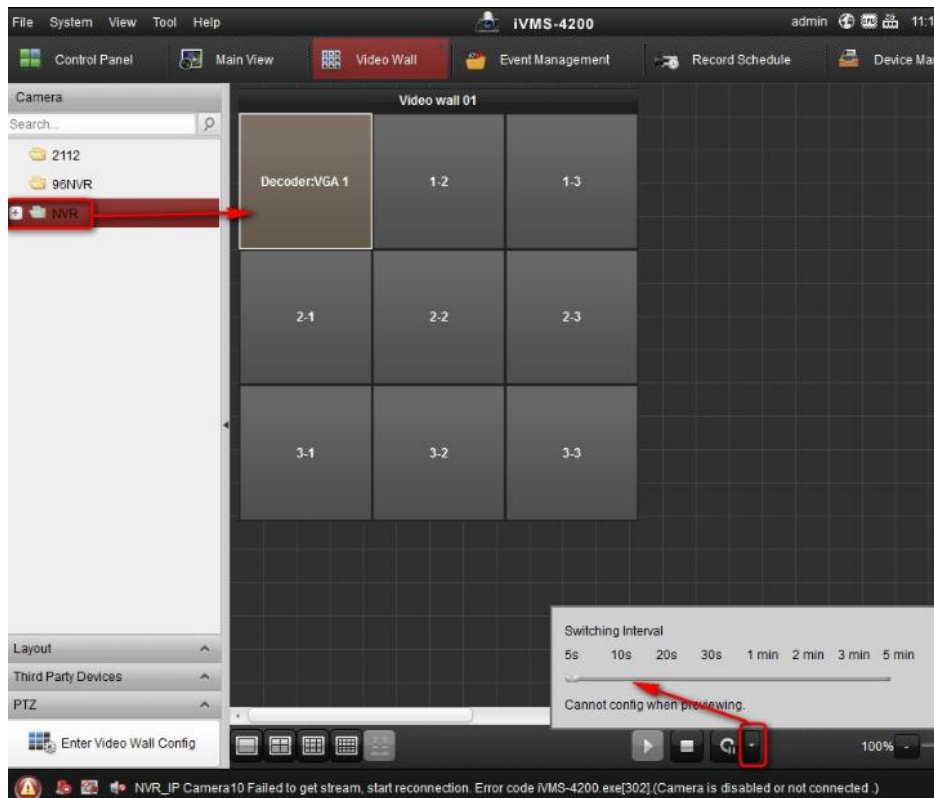
Step 10: Drag the camera to video wall to decoder it to monitor (Such as VGA1).



Step 11: Click  to check the camera which is decoded.

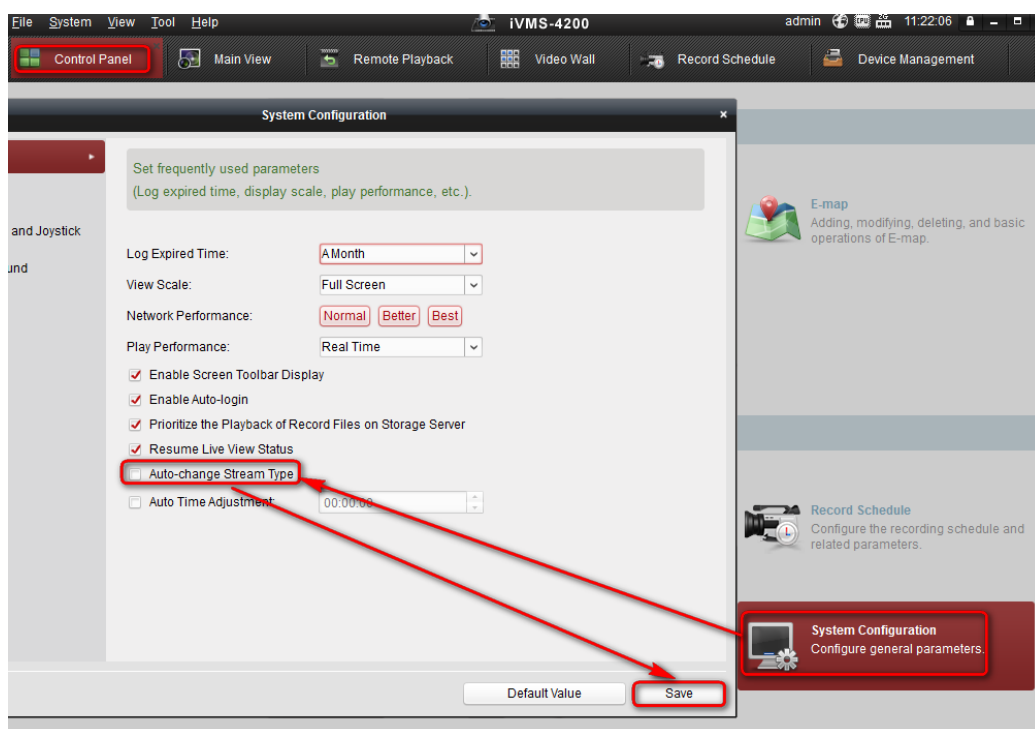


Step 12: Drag the Group to the video wall and then all cameras in this group will switch automatically. Click  to set switching interval.

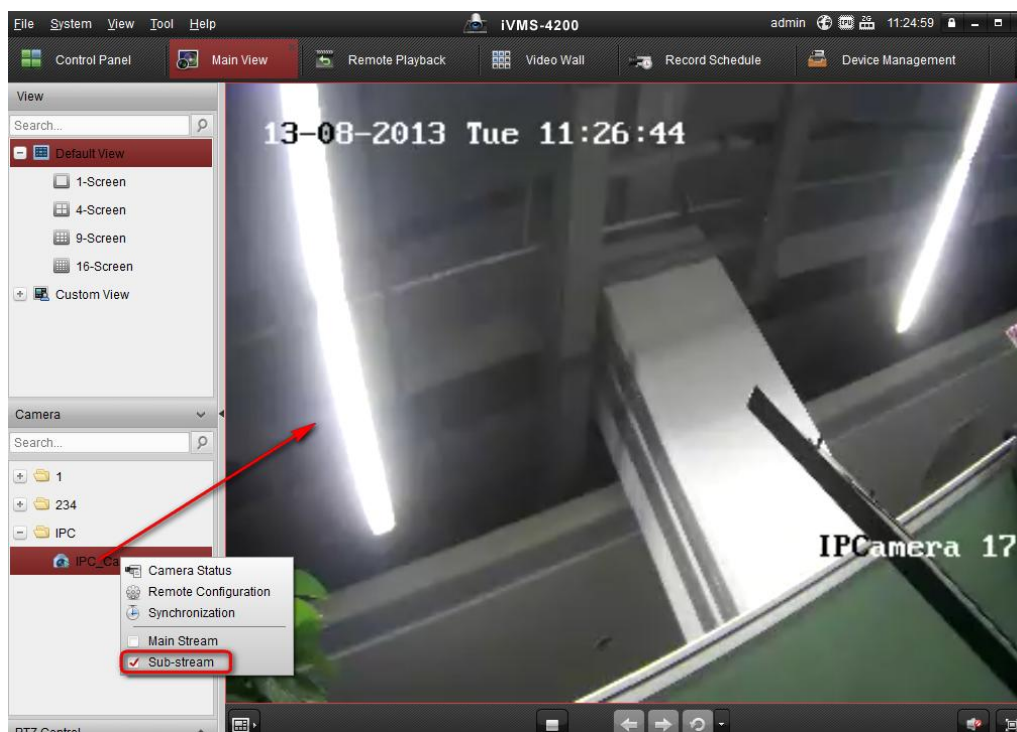


Part 2 How to decoder sub-stream of video

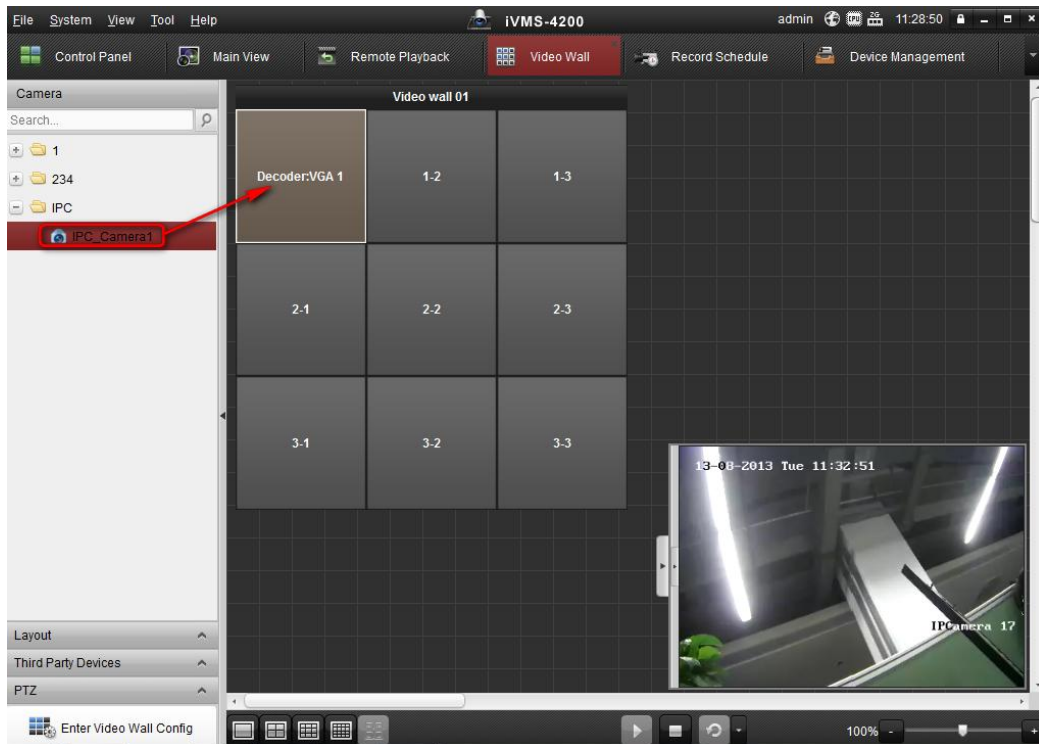
Step 1: Click **Control Panel**> **System Configuration**, and then disable **Auto-change Stream Type**



Step 2: Go to **Main View**, select **Sub-stream** and then drag it to window. Now we can preview the camera by sub-stream.



Step 3: Go to **Video Wall**, and then drag the camera to VGA1 of decoder. Now the sub-stream will be decoded to monitor VGA1.



First Choice for Security Professionals
Hikvision Technical Support