

DS-1621ZJ / DS-1622ZJ

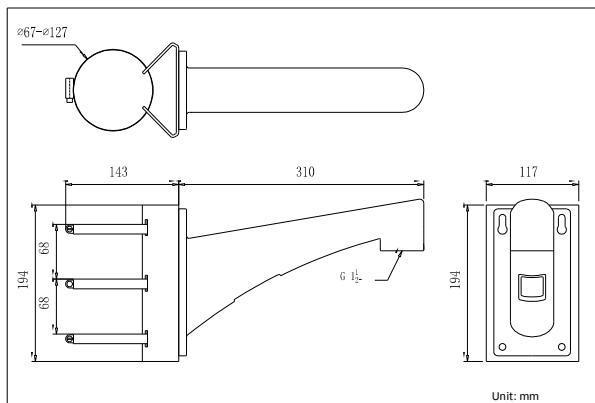
Pole Mount



Features:

- Aluminum alloy material with surface spray treatment
- The size of threaded hole is G1½ of British System
- Better water proof with long-arm and nose-up pitching design
- With safety rope, the assembling is safer and more convenient

Dimension:



Order Model:

DS-1621ZJ

DS-1622ZJ

Parameter:

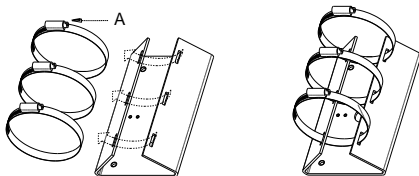
Model	DS-1621ZJ	DS-1622ZJ
Parameters	Pole Mount	
Appearance	White	Hikvision White
Range of Application	Suitable for pole installing Size of clamp: Φ67-127mm (Not suitable for DS-2AE-714)	
Material	Aluminum Alloy	
Dimension	117×194×310mm	
Weight	2000g	

Notice:

- Color should be noticed when choosing bracket
- Mounting surface of branch should be smooth
- Suitable for pole installation whose diameter is ranging from Φ 67-127mm
- The pole must be capable of enduring over 3 times as much as the total weight of the camera and the mount.
- The maximum load capacity of the bracket is 15KG

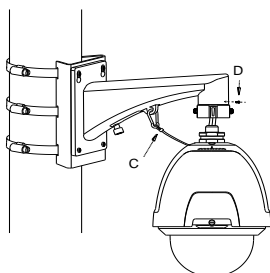
Installation Step:

- ① Fix the clamp accessory on the pole by screwing the knobs



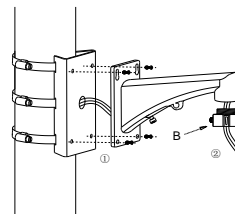
A: elastic knob of clamp

- ③ Screw the pendant adapter tight, fasten the safety rope and do the wiring



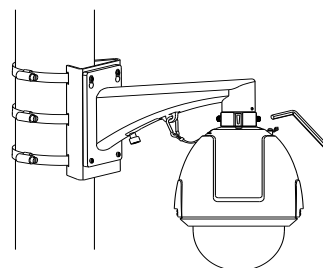
C: Safety rope D: Lock Screw

- ② Tighten the screws and screw pendant adapter tight onto the branch. Thread the lines smoothly through the bracket



B: pendant adapter

- ④ Fix the dome and fasten the screw tight. Assembling is complete.



Note: The figure of Speed Dome in "Installation Step" is only for your reference; please adhere to our real products.