



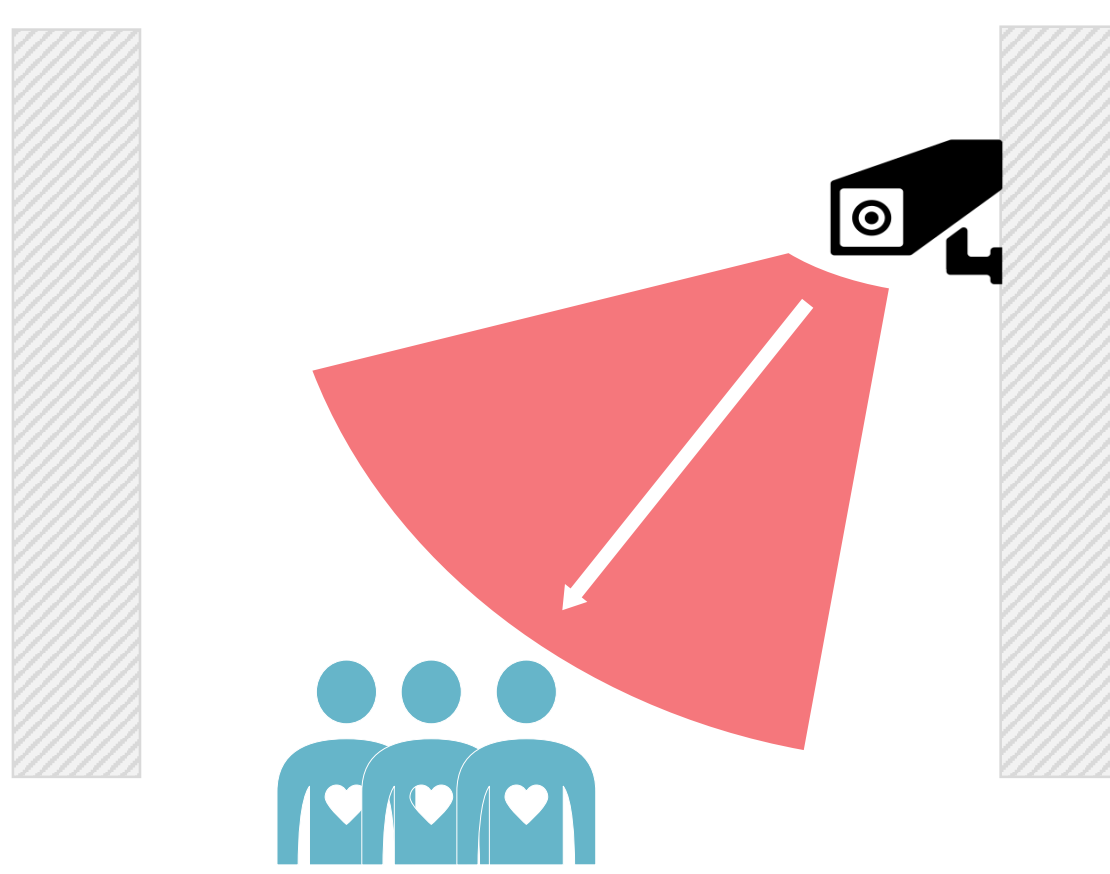
Temperature Screening Thermal Camera Installation & Configuration Guide



DS-2TD2636B/ DS-2TD2637B

Temperature measurement range: 30-45°C
 Working temperature: 10-35°C
 Accuracy: ±0.5°C
 Resolution: 384 × 288

1 Installation-Wall-mounted deployment

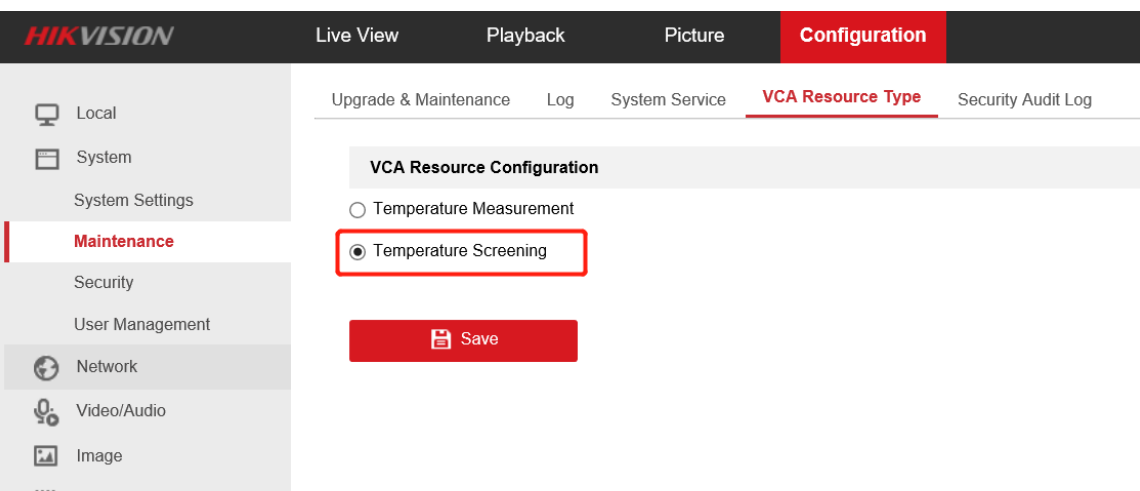


Installation Parameter Recommended

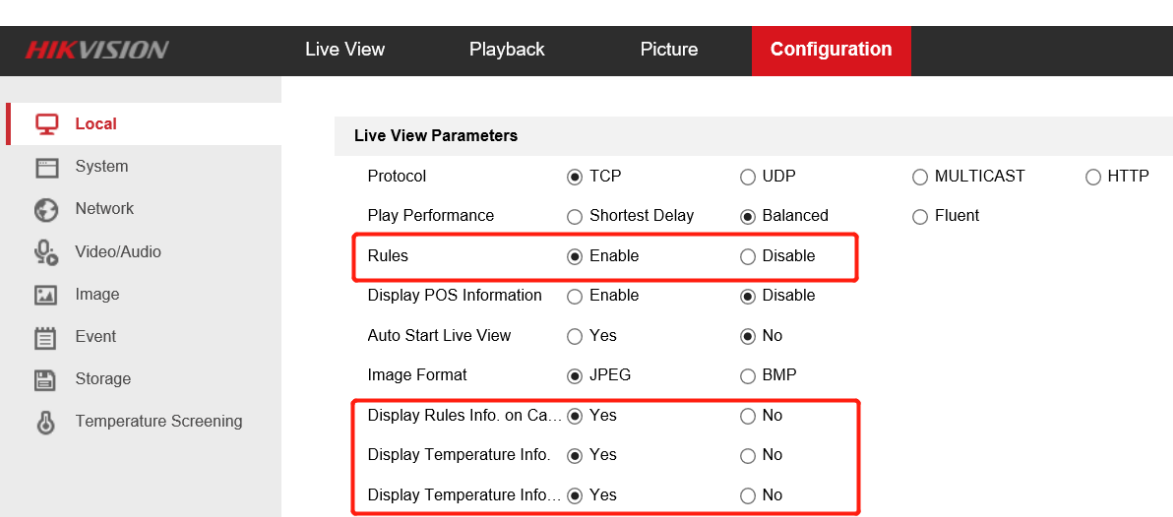
Model	Distance (between human&camera)	Height	Elevation angle
DS-2TD2637B-10/P	2-7m	2.5m	≤20°
DS-2TD2636B-13/P	2.5-7m		
DS-2TD2636B-15/P	2.5-9m		

2 Configuration

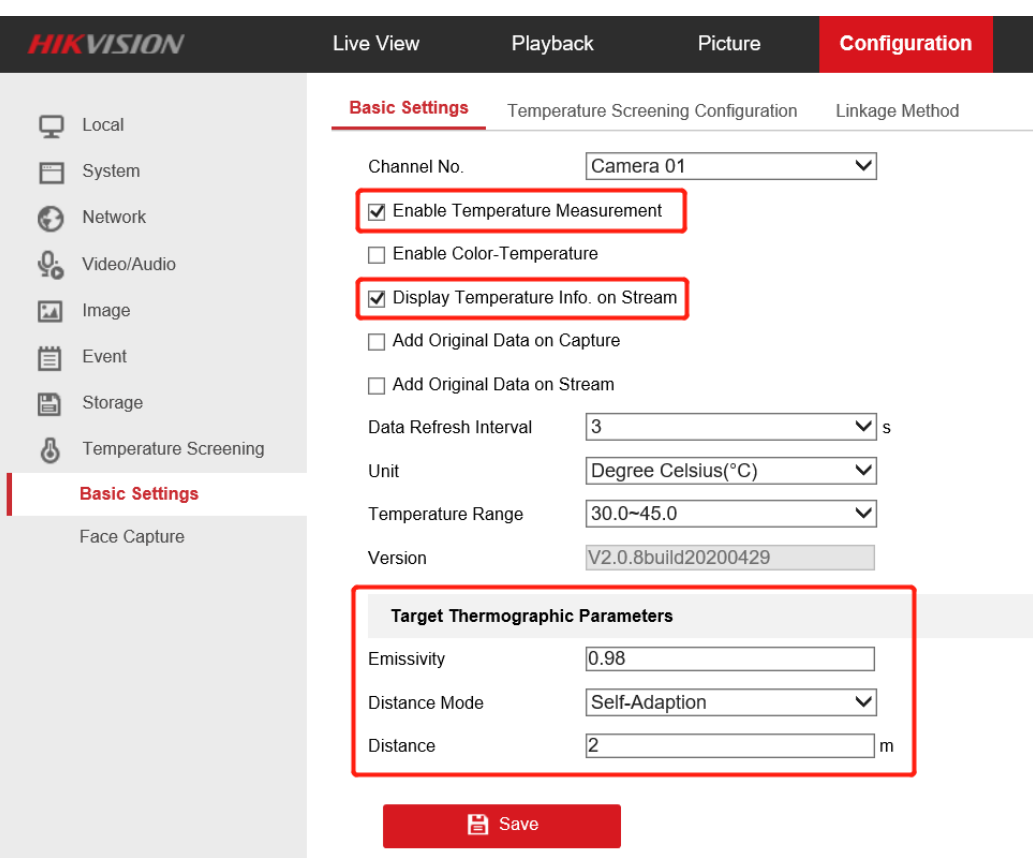
1. Select **Temperature Screening** as VCA Resource Type.



2. Go to Local Configuration interface, enable and save the following settings:



3. Go to Temperature Screening **Basic Settings**. Configure and save the following settings:

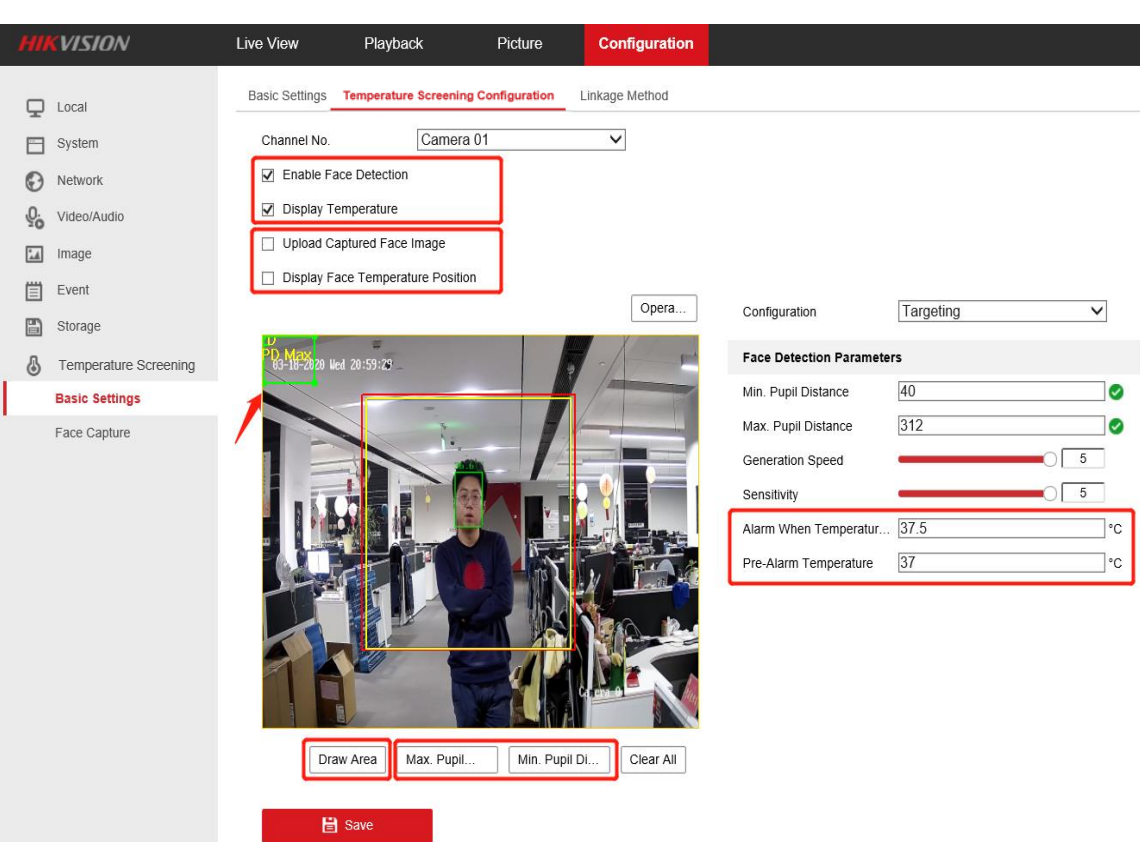


Emissivity: For human skin, this value is normally set as 0.98.

Distance Mode: Select **Self-Adaption** or **Fixed Distance** as distance mode during measurement.

Distance: The actual distance between the camera and human.

4. Configure **Camera 01 (Optical)** Settings.

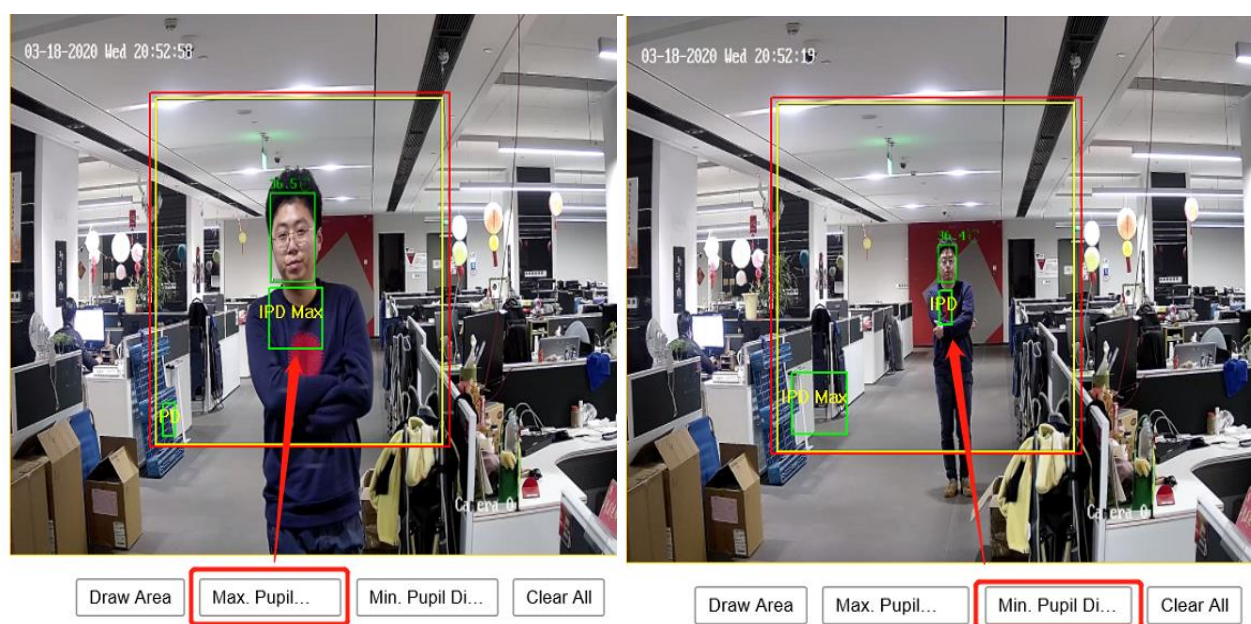


Check **Enable Face Detection** and **Display Temperature**. Check **Upload Captured Face Image** and **Display Face Temperature Position** if needed.

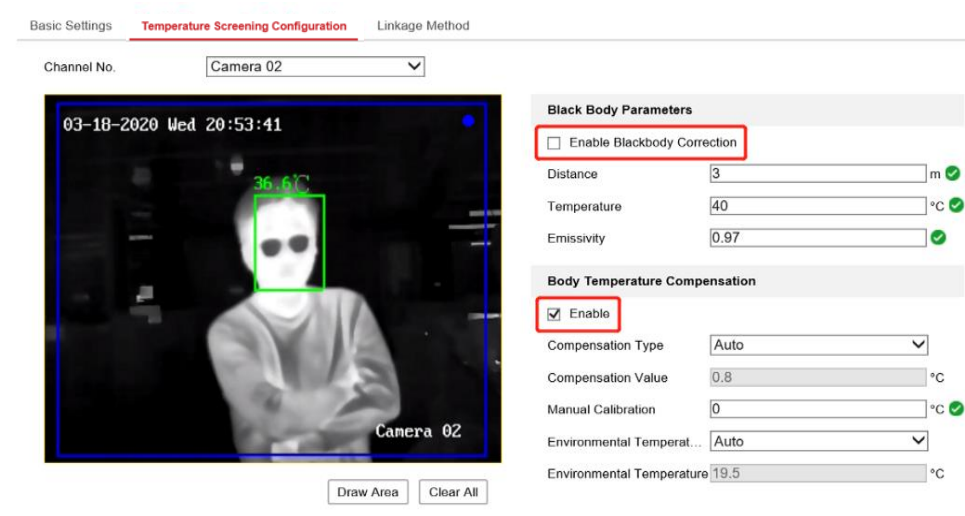
Set **Alarm Temp.** and **Pre-alarm Temp.**

Press **Draw Area** to adjust face detection region.

Click **Max. Pupil Distance** and **Min. Pupil Distance** to draw width filter frame, Max and Min distance refer to camera detection distance.

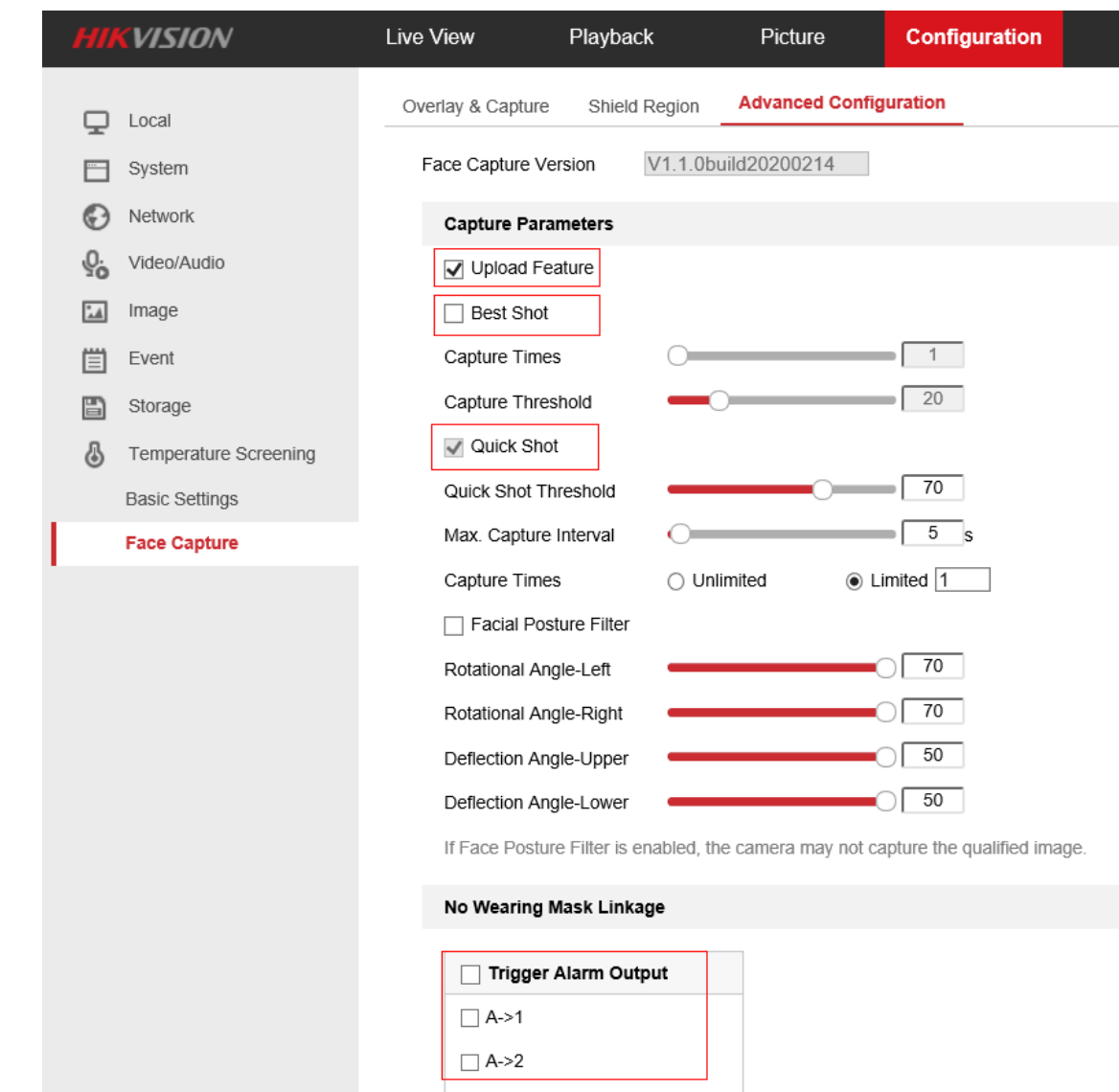


5. Configure **Camera 02 (Thermal)** Settings.



Uncheck **Enable Blackbody Correction** If no blackbody is used. Check **Enable of Body Temperature Compensation** and keep parameters as default.

6. Configure **Face Capture**.



Check **Upload Feature** to upload mask detection info. to IVMS-4200 event details and AI Dashboard interface.

Best Shot: If a face image score never reaches threshold and no abnormal temperature is detected, no face capture will be uploaded.

Quick Shot: At least one face capture will be uploaded even if it is a low-quality face image.

It is recommended to use **Quick Shot** for better response performance, and use **Best Shot** if high quality image is required for comparing.

The **No Wearing Mask Linkage** is disabled by default. You can link one of Alarm Output interfaces to **No Wearing Mask** and another one to **Abnormal Temperature**.

3 Advice

The environment would easily influence the performance of thermal camera. Therefore, it is required to be used in a stable indoor environment without wind, and the ambient temperature should be consistent.

Here's some advice:

1. Set up a one-way screening zone, and ensure that camera can clearly see the face of person whose skin-surface temperature is being measured.
2. Avoid backgrounds that are too crowded or bright.
3. 90 minutes after turn on the camera, then go skin-surface temperature measurement, because the camera itself needs to be steady first.
4. If there is a large gap between indoor and outdoor temperature, it is suggested to wait more than 5 minutes then measure skin-surface temperature of whom just got in.
5. Follow the guidance of required temperature measurement distance and height.