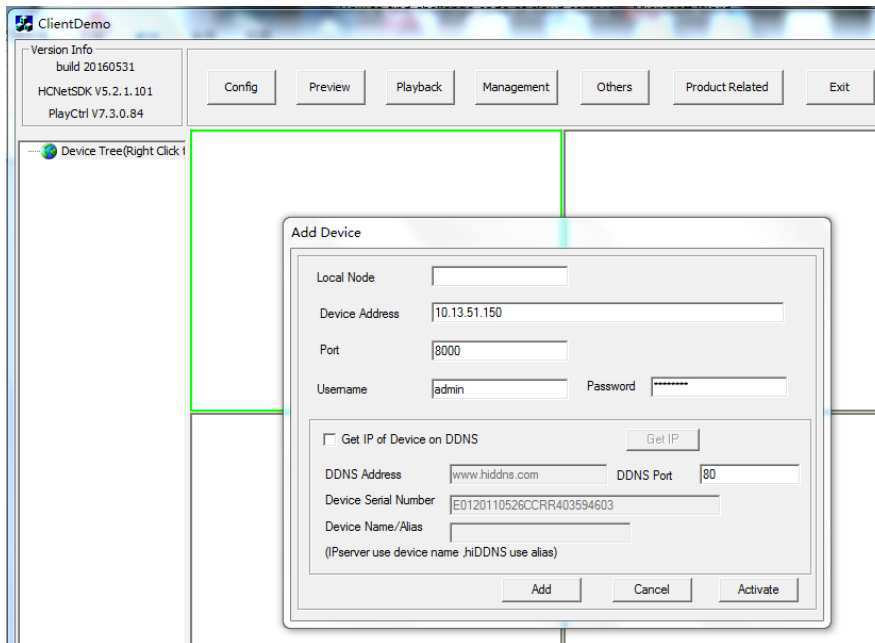
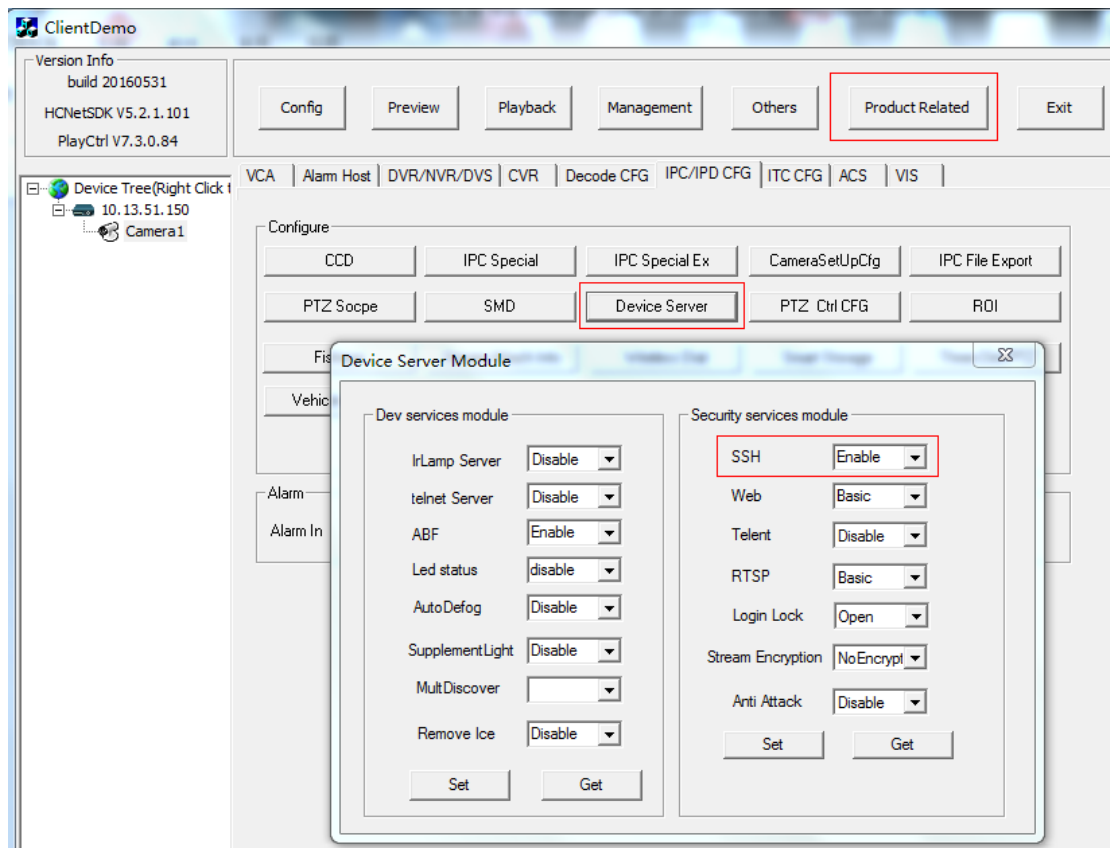


# How to find challenge code of cloud camera

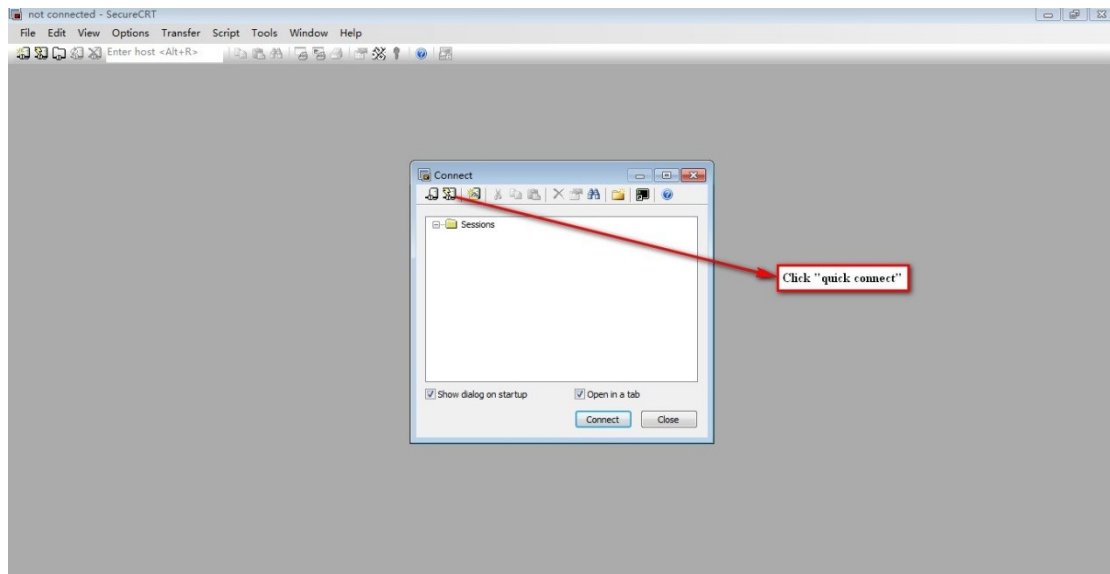
Step 1: Add the camera to clientDemo tool.



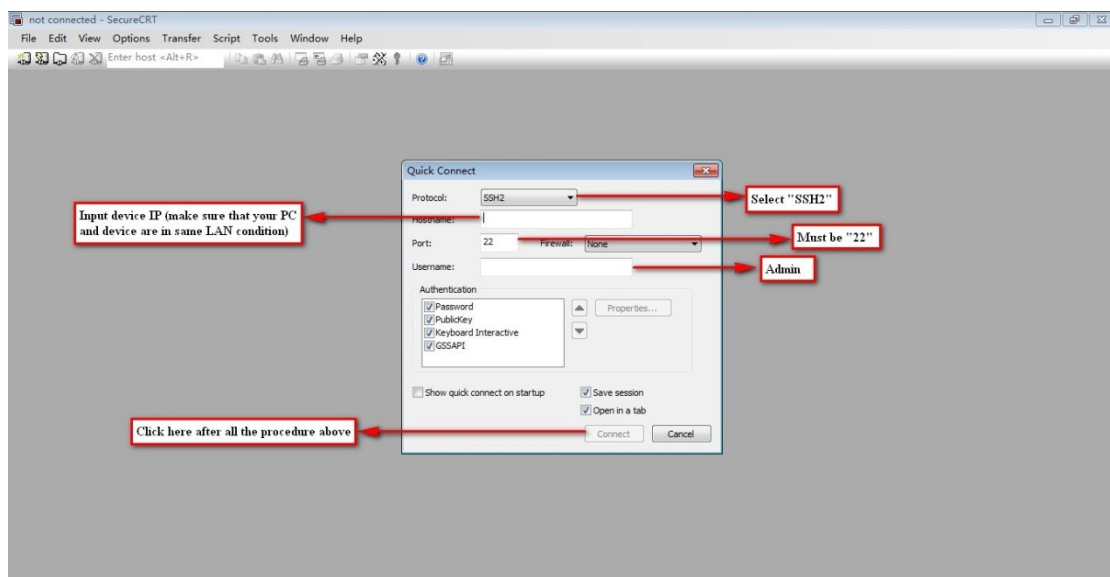
Step 2: Choose the camera and find the path: Product Related->IPC/IPD CFG->Device Server->Enable SSH, and click Set to save the setting.



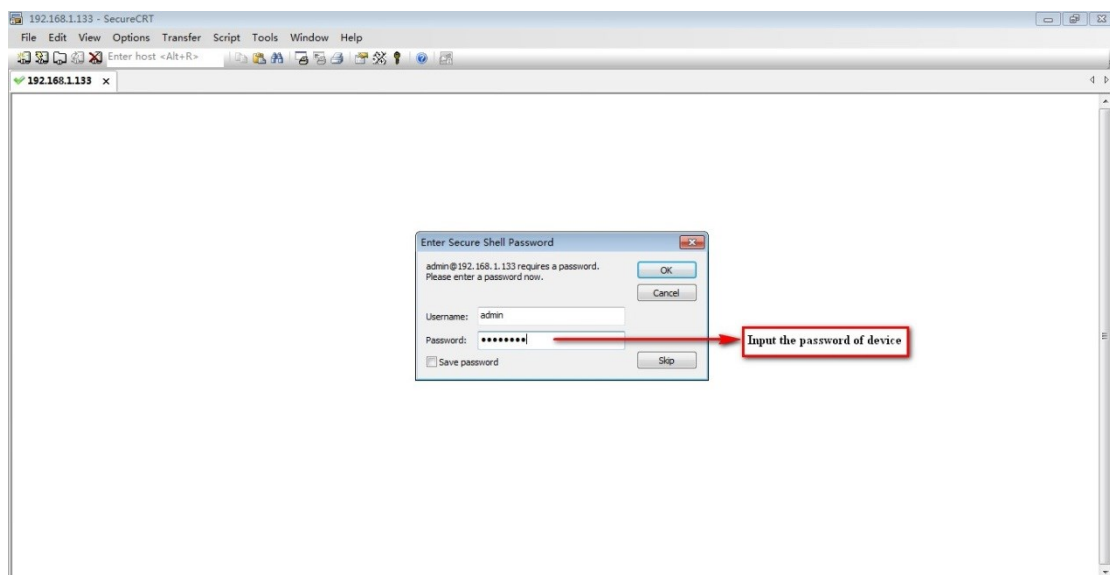
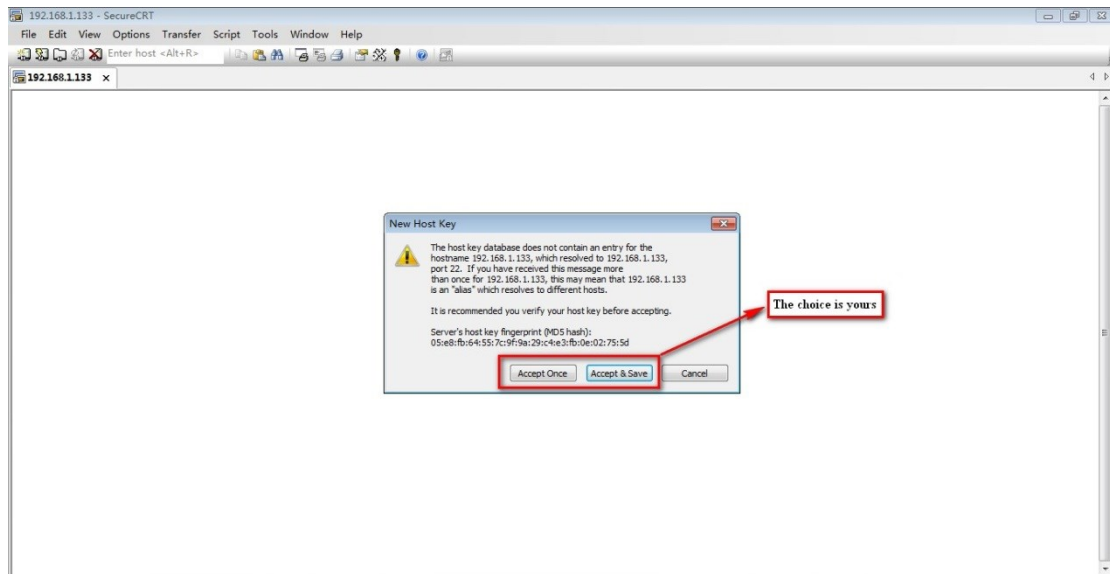
Step 3: Download secureCRT software, run it and click “quick connect”.



Step 4: Fill in the parameters and click “connect”.



Step 5: Click “accept once” or “accept&save” and input the password of device.



Step 6: Input "showKey" and press "Enter" button, challenge code will be found.

```
192.168.1.133 - SecureCRT
File Edit View Options Transfer Script Tools Window Help
Enter host <Alt+R>
192.168.1.133 x
BusyBox v1.19.3 (2015-03-20 17:37:48 CST) built-in shell (ash)
Enter 'help' for a list of built-in commands.
BusyBox v1.2.1 Protect shell (psh)
Enter 'help' for a list of davinci system commands.
# showKey
challenge code: ABCDEF
operation code: 74608e8c-060f-11e5-8000-802d9d00042d
authorization code: 20c6f97b9f3d42eab1e76e2ed62ea125
command key: 696f91f6052a40b7
permanent code(enable): ABCDEF
permanent code default: ABCDEF
user id: 3f9ff485d974a29c
#
```

Input "showKey" and press "Enter" button

The challenge code will be found