



IVMS-4200 V2.4.0.6

2015-10-27

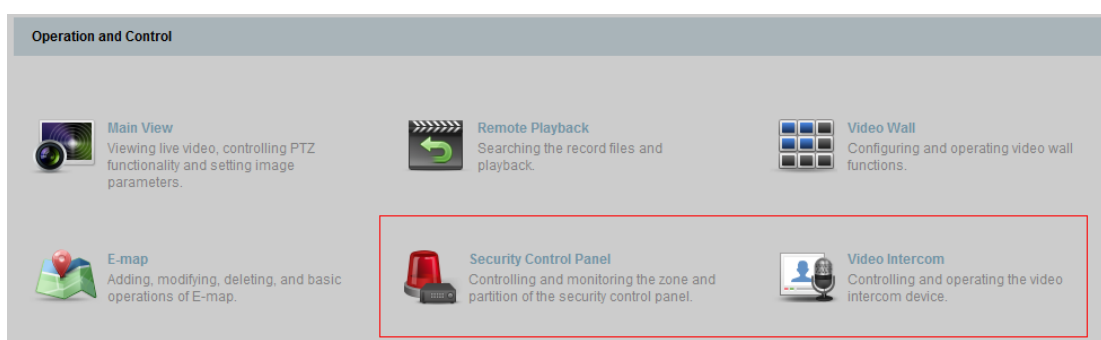
iVMS-4200 V2.4.0.6 Release Notes

General Information

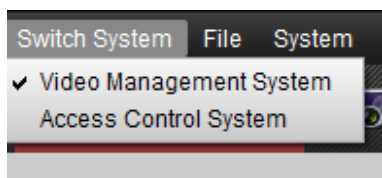
Software Version	V2.4.0.4 build20150916
Network SDK Lib	V5.1.3.13 build20150813
Play Lib	V7.3.0.40 build20180829
VCA Config Lib	V3.3.1.2 build20150831

V2.4.0.6 Key Updates

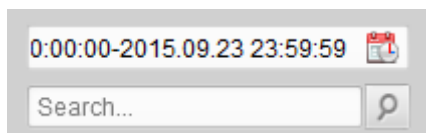
1. Support access control, security control panel, video intercom devices.
 - Security control panel and video intercom devices can be controlled in the video management system.



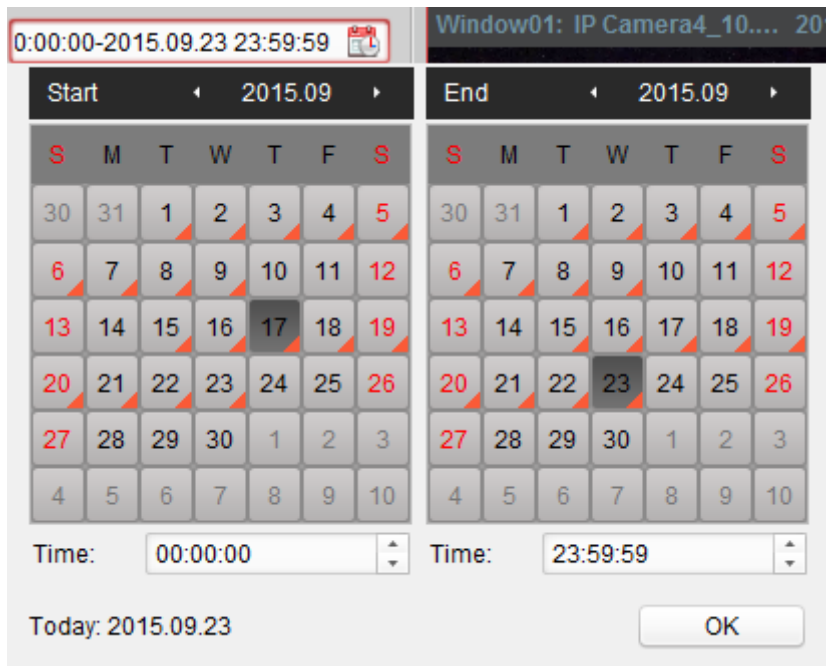
- Users can switch to access control system to control the access control devices.



2. Support live view and playback of H.264+, H.265 video streams.
3. Optimize remote playback module.
 - Time filter:



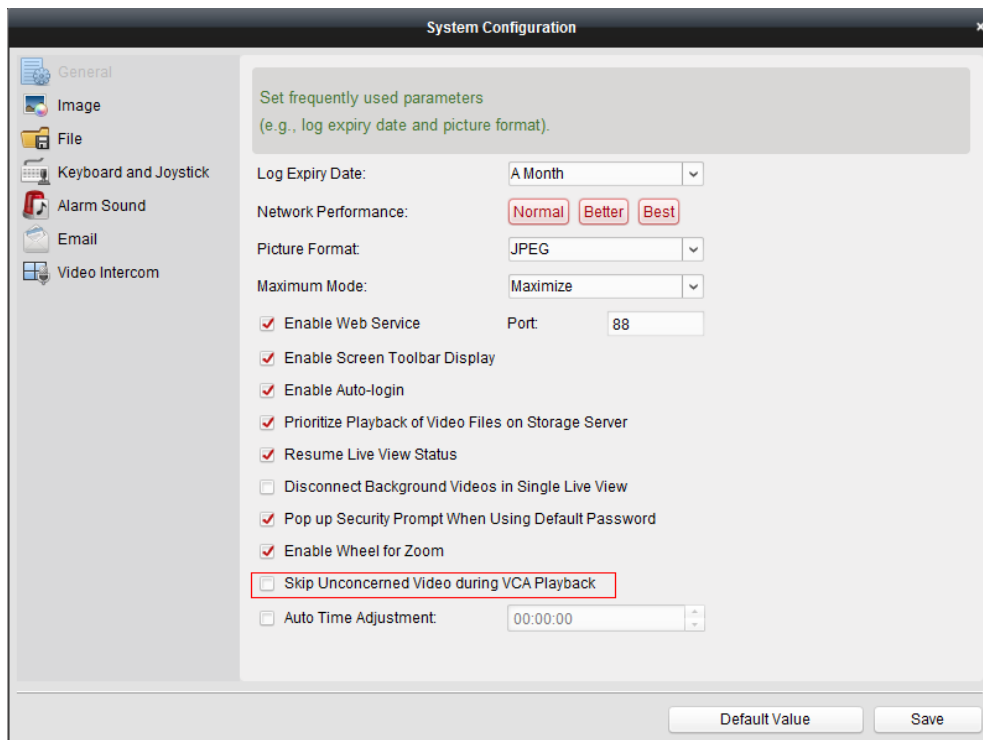
- Video hint in the calendar:



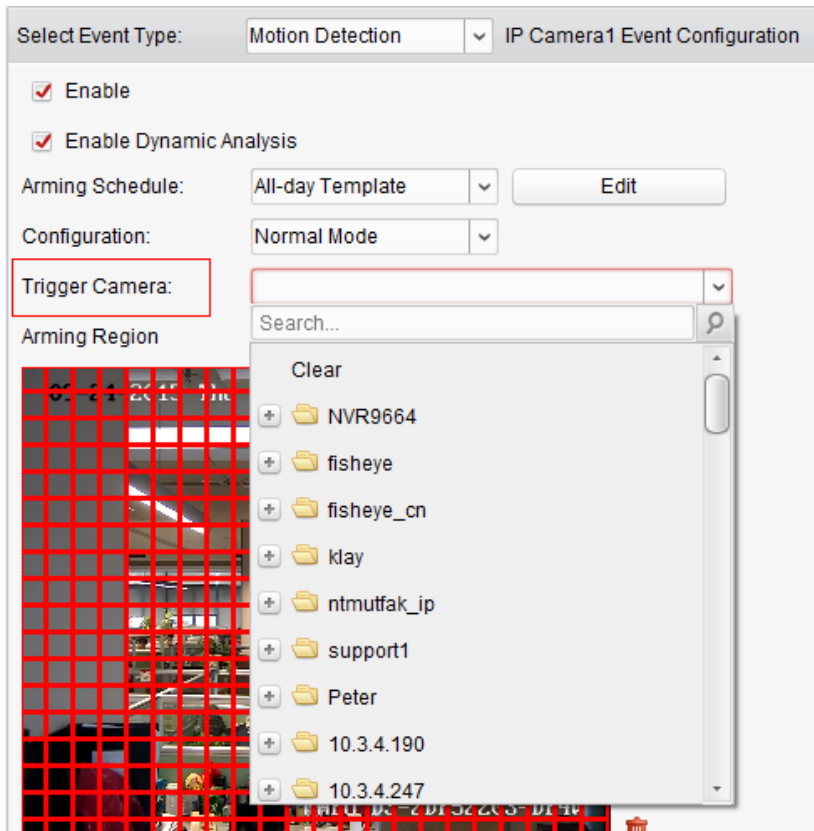
- Previous/next button to go to the previous/next event video in event playback



- Video skip in VCA playback



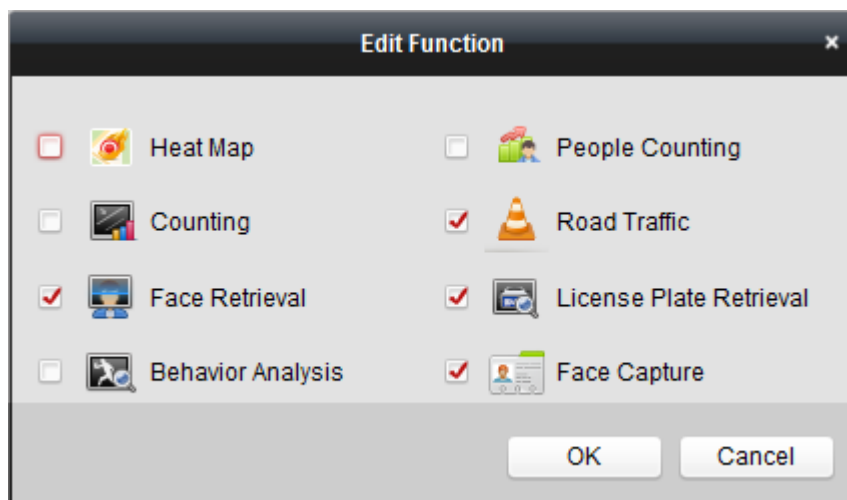
4. Support auto login of ezviz account.
5. Support up to 256-ch in one group
6. Support linkage (image popped up) to other camera in event management.



7. Support smart event triggered recording in storage server. Supported events include intrusion, line crossing, region entrance, region exiting.
8. Support H.264+ stream recording in storage server.

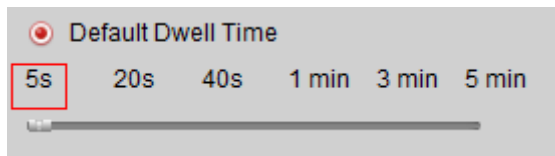
Other Updates

1. Support control panel customization



2. Support face capture statistics.
3. Prompt messages to notify users to modify the storage server port (8000) and stream media server port (554) when they are occupied.
4. Allow multiple users to get stream from the stream media server.

5. Default dwell time for cycle play add option of 5s.



6. Fisheye dewarping has changed to only software dewarping.
7. Login dialog display as soon as the software runs.
8. License plate input limit in road traffic module: Chinese version only support 5 digits, English version support 7-bit combination of numbers and lower- and upper-case letters.
9. People counting and counting function support only one channel statistics.
10. Support Windows 10.