

**iVMS-4200(Mac)**

**Version:V1.02.05.02**

**Release Note**

**(2017-10-11 )**

## V1.02.05.02 Key Updates

1. Support adding device via Hik-Connect domain.
  - a. Select **Hik-Connect** as the adding mode In the Device Management part

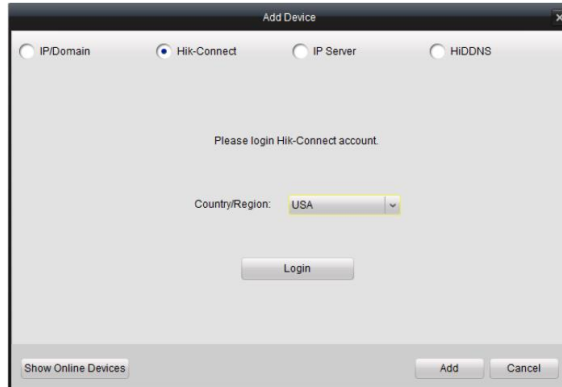


Figure 1

- b. Input the Hik-Connect account and password to login Hik-Connect account.

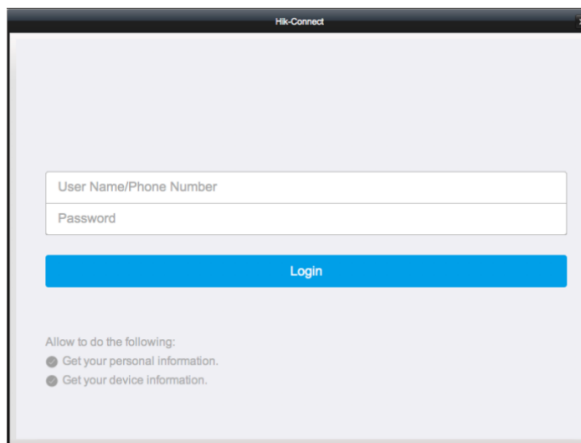


Figure 2

- c. All the devices added in this account will display, by Inputting the user name and password to add the device.

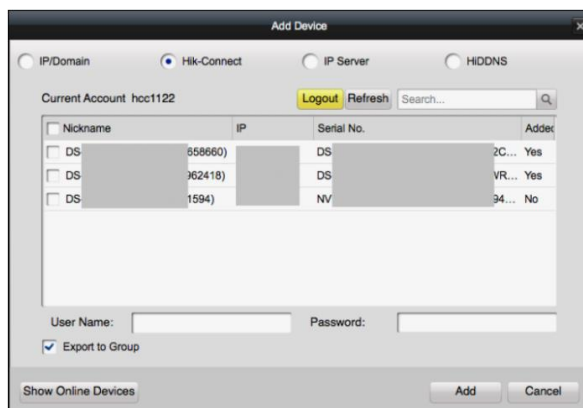


Figure 3

Note: The account information will keep 7 days. After 7 days, you are required to log in to the account again.

2. Support switching stream type automatically in system configuration.



Figure 4

3. Support viewing live video and playing video files in full screen mode.
4. Support setting a custom window division for live view and playback.
5. Support setting the video expired time.



Figure 5

6. Support setting **STARTTLS** encryption type for email in system configuration.

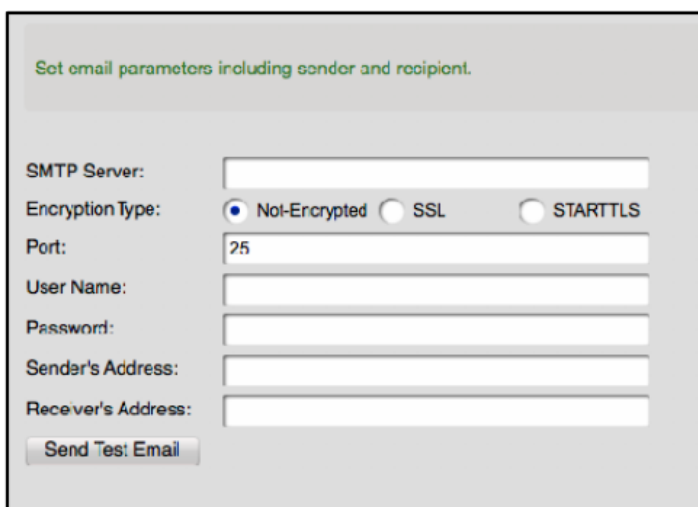


Figure 6

7. Support running on MacOS 10.9 to MacOS 10.12.