



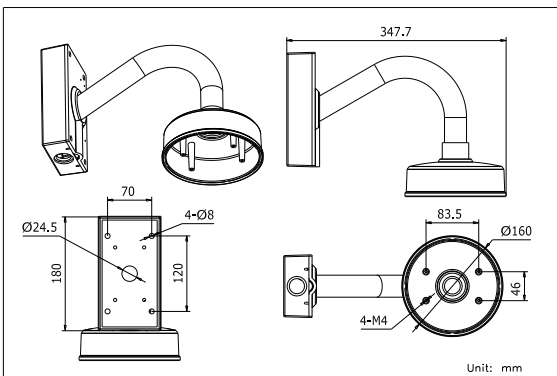
DS-1257ZJ

Indoor/Outdoor Wall mount (with wire intake box)

Features:

- Aluminum alloy material with surface spray treatment
- Beautiful design with wire outlet hole
- Better weather proof performance with gooseneck design
- Special bracket for DS-2CD73XX and DS-2CD7X2MF-(I)FB series

Dimension:



Order model:

DS-1257ZJ

Parameters:

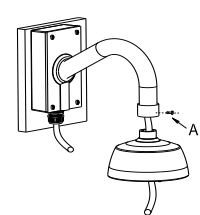
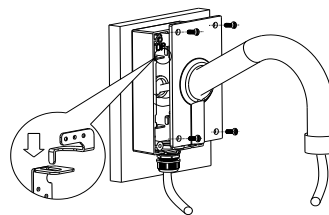
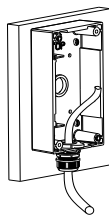
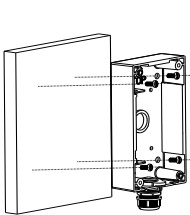
Model	DS-1257ZJ
Parameters	Indoor/Outdoor Wall mount(with wire intake box)
Color	Hik white
Feature	Suitable for DS-2CD73XX and DS-2CD7X2MF-(I)FB(H)series
Material	Aluminum alloy
Dimension	160×180×347.7mm (6.30"×7.09"×13.69")
Weight	1900g(4.19lbs)

Notice:

- This bracket is only available for DS-2CD73XX and DS-2CD7X2MF-(I)FB(H) series dome camera
- Pay attention to the color matching when select bracket
- The bracket should be installed on flat wall
- The wall must be capable of supporting more than 3 times the total load of the camera and the mount.
- The maximum load capacity of the mount is 4.5KG

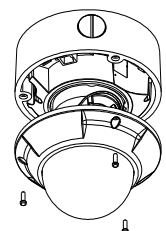
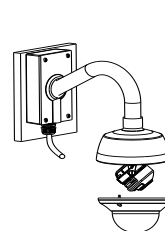
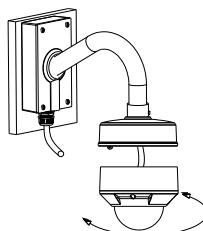
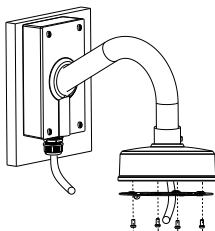
Installation steps:

- ① Select suitable wall to install wire intake box
- ② Fix the cable across the waterproof plug
- ③ Fix the gooseneck on the wire intake box, wiring and tighten the lock screw
- ④ Screw the bowl on the gooseneck, thread and tighten the lock screw



Notice: "A" stands for the lock screw

- ⑤ Fix the bowl and install the metal then plate on it
- ⑥ Finish wiring of camera, fix the dome over the metal plate
- ⑦ Finish bracket installation and tighten the lock screw
- ⑧ Open the housing to adjust camera angle and lens



Remark: 1. Appearance of Installation steps is for reference only

2. Metal plate is only necessary for some dome cameras, please see the packing box to get more details