

How to upgrade firmware to handheld thermography camera

Purpose

Upgrading new firmware to handheld thermography camera.

Preparation

1. Make sure that computer has installed SADP tool.
2. Download the firmware file to the desktop.

Steps

1. Make the computer and device in the same network.
 - 1.1 Select the **Local Settings** (🔑) from the main menu.
 - 1.2 Go to **Local Settings>Device Settings>Wi-Fi Settings**.



Figure 1

1.3.1 Tap on **WLAN Hot Spot** to enable the WLAN hot spot function. Tap **Set WLAN hot spot** to display password. The default password is 12345678.

1.3.2 Or Tap on **Connect to Wi-Fi** to enable Wi-Fi, and the searched Wi-Fi will be listed below.

1.4 Connect your computer to the WLAN Hot Spot of the camera or the same Wi-Fi source of the camera. (Take WLAN Hot Spot for example)

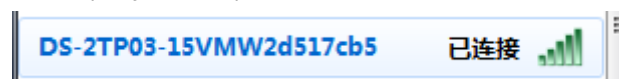


Figure 2

2. Search the device by SADP tool. Then active the device and set the strong password to the device.

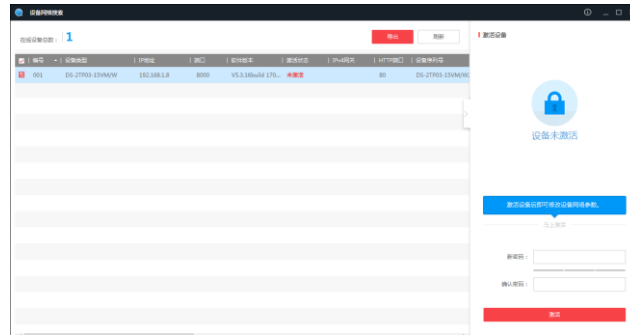


Figure 3

3. Make sure the IP address of device and computer is in the same network segment. Then connect the device via web browser.



Figure 4

4. Select **Configuration>System>Maintenance**, find the firmware file, then click **Upgrade** to update new firmware file to the device.



Figure 5

First Choice for Security Professionals

HIKVISION Technical Support